

300-420^{Q&As}

Designing Cisco Enterprise Networks (ENSLD)

Pass Cisco 300-420 Exam with 100% Guarantee

Free Download Real Questions & Answers **PDF** and **VCE** file from:

<https://www.leads4pass.com/300-420.html>

100% Passing Guarantee
100% Money Back Assurance

Following Questions and Answers are all new published by Cisco
Official Exam Center

-  **Instant Download** After Purchase
-  **100% Money Back** Guarantee
-  **365 Days** Free Update
-  **800,000+** Satisfied Customers



QUESTION 1

An engineer must use YANG with an XML representation to configure a Cisco IOS XE switch with these specifications:

IP address 10.10.10.10/27 configured on the interface GigabitEthernet2/1/0 connectivity from a directly connected host 10.10.10.1/27

Which YANG data model set must the engineer choose?

- A. `<rpc-reply message-id="urn:uuid:1b3d05cd-8118-3e6a-6c05-411157936aaf" xmlns="urn:ietf:params:xml:ns:netconf:base:1.0" xmlns:nc="urn:ietf:params:xml:ns:netconf:base:1.0">`
`<data>`
`<native xmlns="http://cisco.com/ns/yang/ned/ios">`
`<router>`
`<ospf>`
`<id>200</id>`
`<network>`
`<ip>172.16.10.128</ip>`
`<mask>0.0.0.63</mask>`
`<area>0</area>`
`</network>`
`</ospf>`
`</router>`
`</native>`
`</data>`
`</rpc-reply>`
- B. `<rpc-reply message-id="urn:uuid:1b3d05cd-8118-3e6a-6c05-012435678aaf"`
`xmlns="urn:ietf:params:xml:ns:netconf:base:1.0" xmlns:nc="urn:ietf:params:xml:ns:netconf:base:1.0">`
`<data>`
`<native xmlns="http://cisco.com/ns/yang/ned/ios">`
`<router>`
`<ospf>`
`<id>200</id>`
`<network>`
`<ip>172.16.10.128</ip>`
`<mask>255.255.255.192</mask>`
`<area>0</area>`
`</network>`
`</ospf>`
`</router>`
`</native>`
`</data>`
`</rpc-reply>`
- C. `<rpc-reply message-id="urn:uuid:1b3d05cd-8118-3e6a-6c05-021345678aaf" xmlns="urn:ietf:params:xml:ns:netconf:base:1.0" xmlns:nc="urn:ietf:params:xml:ns:netconf:base:1.0">`
`<data>`
`<native xmlns="http://cisco.com/ns/yang/ned/ios">`
`<router>`
`<ospf>`
`<id>200</id>`
`<network>`
`<ip>172.16.10.128</ip>`
`<mask>0.0.0.192</mask>`
`<area>0</area>`
`</network>`
`</ospf>`
`</router>`
`</native>`
`</data>`
`</rpc-reply>`
- D. `<rpc-reply message-id="urn:uuid:1b3d05cd-8118-3e6a-6c05-012354678aaf" xmlns="urn:ietf:params:xml:ns:netconf:base:1.0" xmlns:nc="urn:ietf:params:json:ns:netconf:base:1.0">`
`<data>`
`<native json="http://cisco.com/ns/yang/ned/ios">`
`<router>`
`<ospf>`
`<id>200</id>`
`<network>`
`<ip>172.16.10.128</ip>`
`<mask>0.0.0.63</mask>`
`<area>0</area>`
`</network>`
`</ospf>`
`</router>`
`</native>`
`</data>`
`</rpc-reply>`

A. Option A

B. Option B

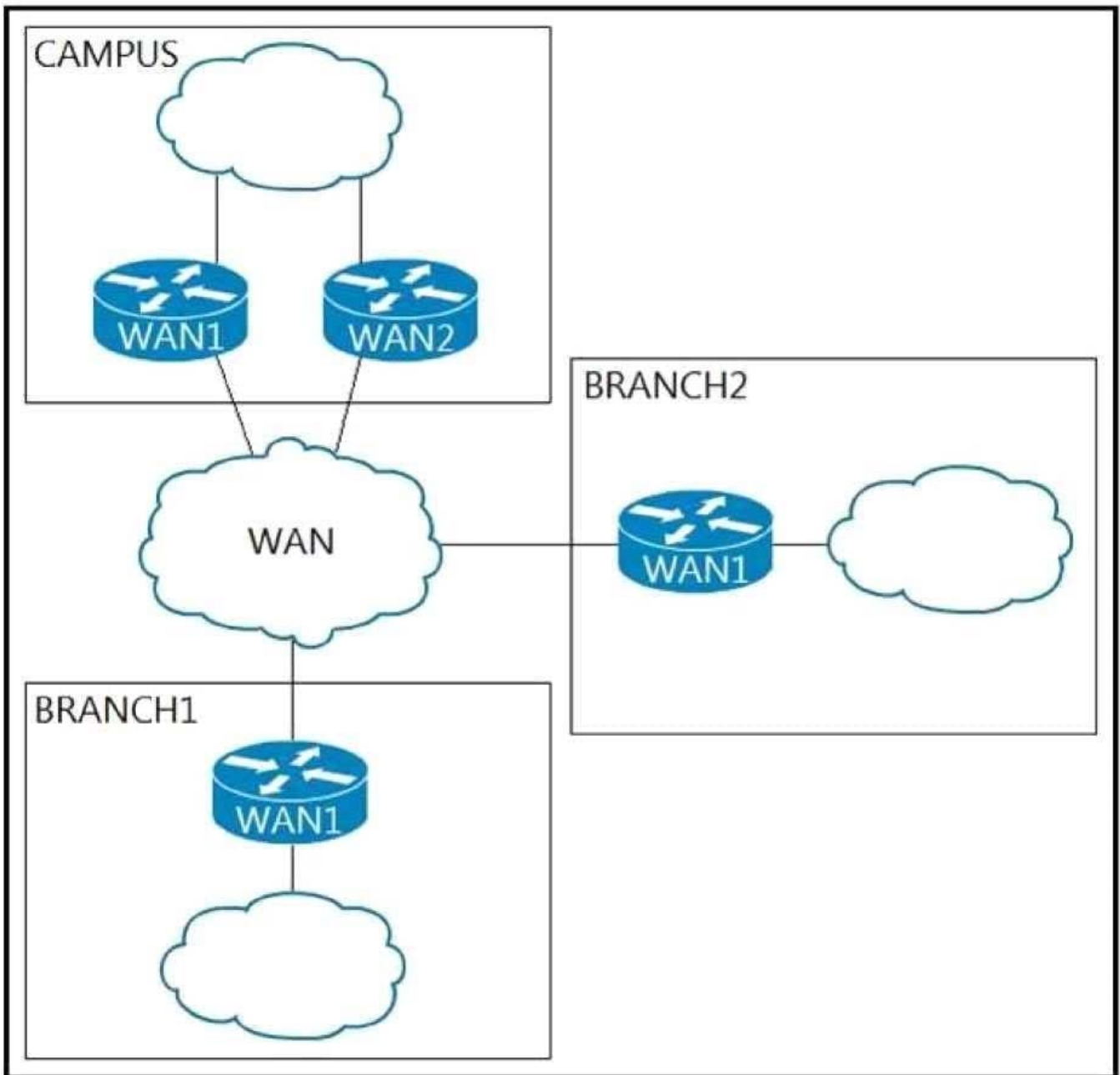
C. Option C

D. Option D

Correct Answer: D

QUESTION 2

Refer to the exhibit. An architect must design an IP addressing scheme for a multisite network connected via a WAN transit. The campus site must accommodate 12,000 devices and the branch sites must accommodate 1,000 devices. Which address scheme optimizes network device resources, contains convergence events to the different blocks of the network, and ensures future growth of the network?



A. Campus: 10.0.0.0/18 Branch1: 10.0.192.0/21 Branch2: 10.0.200.0/21

B. Campus: 10.0.0.0/16 Branch1: 10.255.0.0/20 Branch2: 10.255.16.0/20

C. Campus: 10.0.0.0/10

Branch1: 10.64.0.0/10

Branch2: 10.128.0.0/10

D. Campus: 10.0.0.0/20 Branch1: 10.0.64.0/21 Branch2: 10.0.128.0/21

Correct Answer: A

QUESTION 3

When a first hop redundancy solution is designed, which protocol ensures that load balancing occurs over multiple routers using a single virtual IP address and multiple virtual MAC addresses?

- A. GLBP
- B. IRDP
- C. VRRP
- D. HSRP

Correct Answer: A

QUESTION 4

DRAG DROP

Drag and drop the model driven telemetry characteristics from the left onto the mode they belong to on the right.

Select and Place:

- Updates are sent to the collector.
- Updates are sent to the subscriber.
- Subscriptions must be re-initiated after a reload.
- Subscriptions are part of the device's configuration.

Dial-in

Dial-out

Correct Answer:

Dial-in

Updates are sent to the subscriber.

Subscriptions must be re-initiated after a reload.

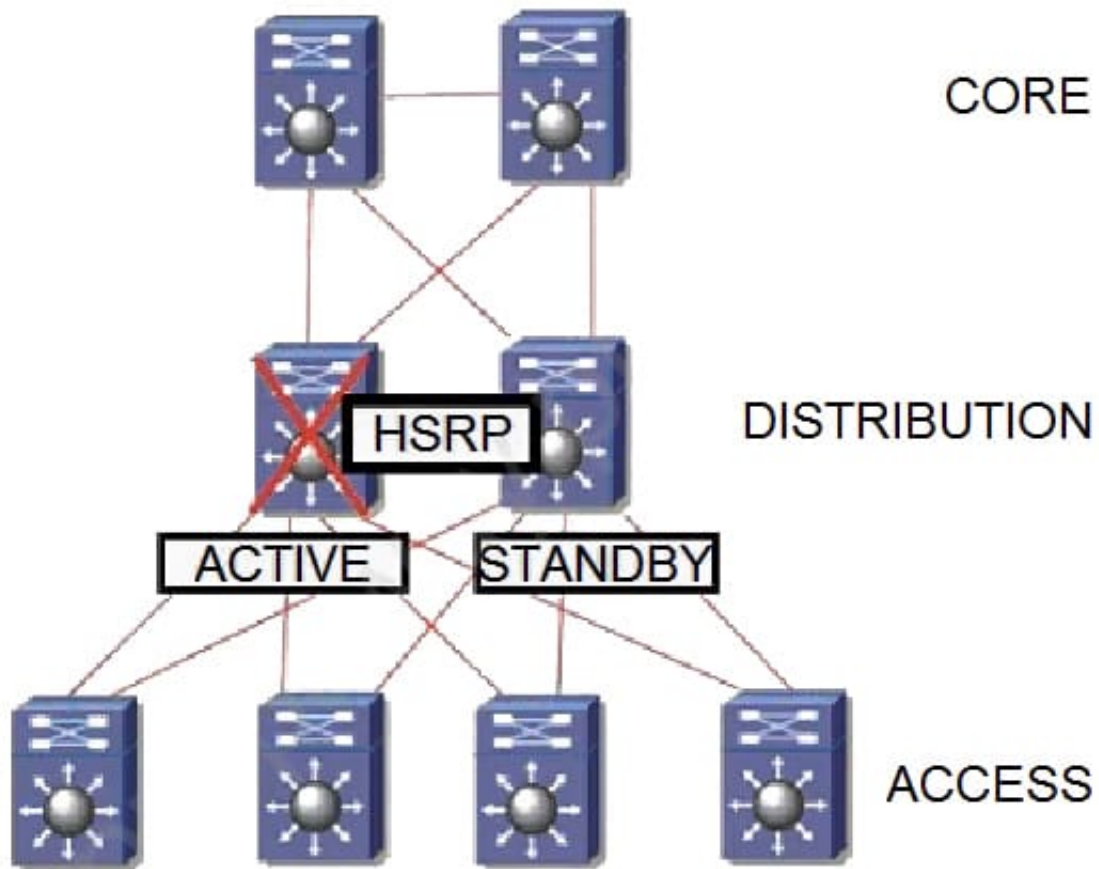
Dial-out

Updates are sent to the collector.

Subscriptions are part of the device's configuration.

QUESTION 5

Refer to the exhibit. The distribution switches serve as the layer 3 boundary. HSRP preemption is enabled. When the primary switch comes back after a failure, traffic is initially dropped. Which solution must be implemented to improve the design?



- A. Increase the hello timers on both HSRP devices
- B. Use the preempt delay feature on the primary HSRP device.
- C. Use the preempt delay feature on the backup HSRP device
- D. Configure a higher mac-refresh interval on both HSRP devices

Correct Answer: B

[Latest 300-420 Dumps](#)

[300-420 Study Guide](#)

[300-420 Exam Questions](#)