



300-370^{Q&As}

Troubleshooting Cisco Wireless Enterprise Networks

Pass Cisco 300-370 Exam with 100% Guarantee

Free Download Real Questions & Answers **PDF** and **VCE** file from:

<https://www.lead4pass.com/300-370.html>

100% Passing Guarantee
100% Money Back Assurance

Following Questions and Answers are all new published by Cisco
Official Exam Center

-  **Instant Download** After Purchase
-  **100% Money Back** Guarantee
-  **365 Days** Free Update
-  **800,000+** Satisfied Customers





QUESTION 1

An engineer uses the shutdown and no shutdown commands on a switch port that an access point is connected to because the AP had disassociated. These commands usually resolve the issue.

Which troubleshooting methodology does this demonstrate?

- A. bottom-up
- B. top-down
- C. divide and conquer
- D. shoot from the hip

Correct Answer: D

QUESTION 2

An engineer is troubleshooting AP join issues on a wireless infrastructure. While gathering debugs, the engineer notices that one of the commands may generate an excessive amount of data on the console. Which command causes this to occur?

- A. debug capwap detail enable
- B. debug capwap errors enable
- C. debug capwap info enable
- D. debug capwap events enable
- E. debug capwap packet enable
- F. debug capwap payload enable

Correct Answer: B

QUESTION 3

When designing your wireless network for iOS devices, which two limits of packet loss and jitter ensure stable, quality communication? (Choose two.)

- A. Jitter should be kept to less than 500 ms.
- B. Packet loss should remain under 1 percent.
- C. Packet loss should remain under 5 percent.
- D. Packet loss should remain under 2 percent.
- E. Jitter should be kept to less than 100 ms.

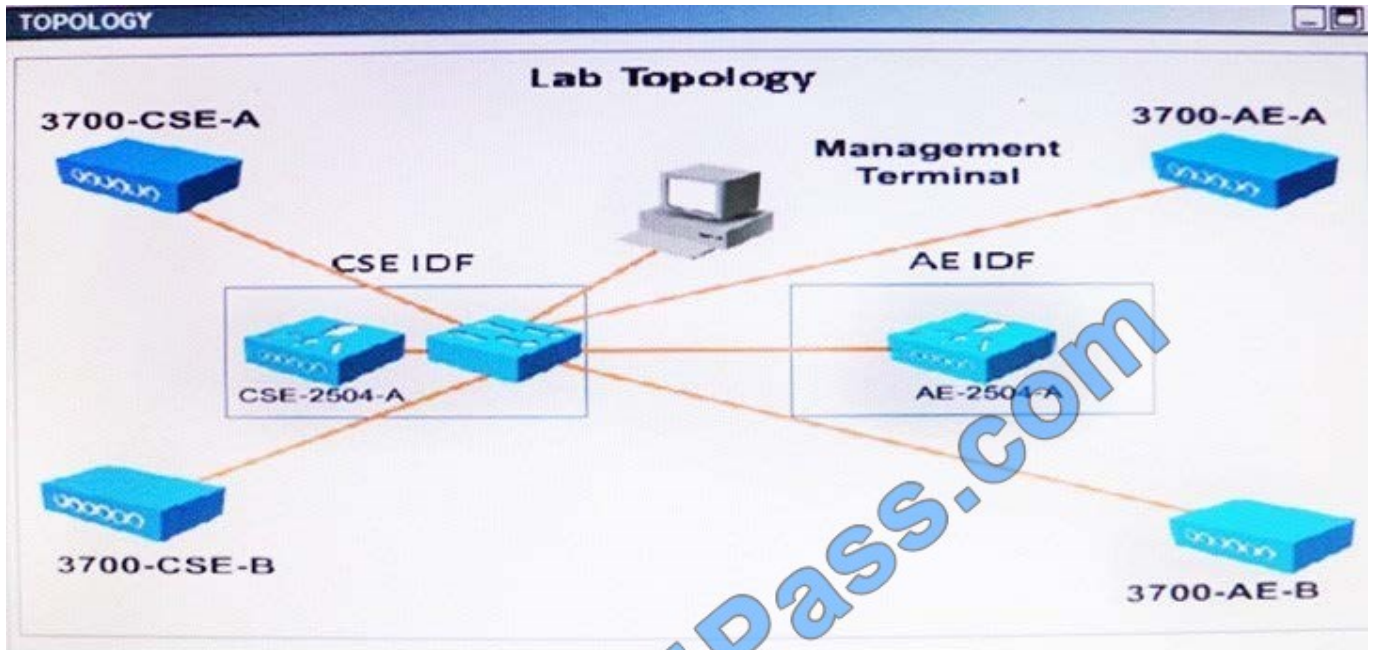


Correct Answer: BE

Reference: https://www.cisco.com/c/en/us/td/docs/wireless/technology/vowlan/troubleshooting/vowlan_troubleshoot/8_Site_Survey_RF_Design_Valid.pdf

QUESTION 4

Refer to the exhibit: Which two statements about the WLAN are true? (Choose two.)



Packet	Source	Destination	Channel	Data Rate	Size	Protocol
3377	Intel:2F:D3:70	Cisco:10:44:EF	136	24.0	48	EAP Response
3378	Cisco:10:44:EF	Intel:2F:D3:70	136	24.0	18	802.11 Ack
3379	Cisco:10:44:EF	Intel:2F:D3:70	136	24.0	85	EAP Request
3380	Intel:2F:D3:70	Cisco:10:44:EF	136	6.0	101	EAP Response
3381	Cisco:10:44:EF	Intel:2F:D3:70	136	6.0	18	802.11 Ack
3382	Cisco:10:44:EF	Intel:2F:D3:70	136	24.0	117	EAP Request
3383	Intel:2F:D3:70	Cisco:10:44:EF	136	24.0	149	EAP Response
3384	Cisco:10:44:EF	Intel:2F:D3:70	136	24.0	18	802.11 Ack
3385	Cisco:10:44:EF	Intel:2F:D3:70	136	24.0	133	EAP Request
3386	Intel:2F:D3:70	Cisco:10:44:EF	136	24.0	85	EAP Response
3387	Cisco:10:44:EF	Intel:2F:D3:70	136	24.0	18	802.11 Ack
3388	Intel:2F:D3:70	Cisco:10:44:EF	136	24.0	85	EAP Response
3389	Cisco:10:44:EF	Intel:2F:D3:70	136	24.0	18	802.11 Ack
3390	Cisco:10:44:EF	Intel:2F:D3:70	136	24.0	46	EAP Success
3391	Cisco:10:44:EF	Intel:2F:D3:70	136	24.0	159	EAPOL-Key
3392	Intel:2F:D3:70	Cisco:10:44:EF	136	24.0	161	EAPOL-Key
3393	Cisco:10:44:EF	Intel:2F:D3:70	136	24.0	18	802.11 Ack
3394	Cisco:10:44:EF	Intel:2F:D3:70	136	24.0	193	EAPOL-Key
3395	Intel:2F:D3:70	Cisco:10:44:EF	136	24.0	137	EAPOL-Key
3396	Cisco:10:44:EF	Intel:2F:D3:70	136	24.0	18	802.11 Ack
3397	Cisco:10:44:EF	Intel:2F:D3:70	136	24.0	24	802.11 RTS
3398	Cisco:10:44:EF	Intel:2F:D3:70	136	2.0	108	802.11 Encrypted Data
3399	Cisco:10:44:EF	Intel:2F:D3:70	136	24.0	24	802.11 RTS
3400	Cisco:10:44:EF	Intel:2F:D3:70	136	2.0	108	802.11 Encrypted Data

A. The client has a 5 GHz connection.



- B. The client has authenticated.
- C. The client is 802.11n capable.
- D. The Cisco device is a 3600 series AP.
- E. 802.11b data rates are disabled in this WLAN.

Correct Answer: CE

QUESTION 5

Refer to the exhibit.

	Name	Management IP Address (Ipv4/Ipv6)
Primary Controller	WLC-Primary	192.168.1.11
Secondary Controller	WLC-Secondary	10.42.98.11
Tertiary Controller		

AP Failover Priority:

An engineer has determined that during a recent controller failure, some access points did not fail over to their secondary controller, which has sufficient licenses for all APs. The controllers are not in a mobility group, but have A records for their hostnames in DNS.

Using these high availability settings, which option is the most likely cause of this issue?

- A. The AP failover priority was not set high enough.
- B. The controllers must be in the same mobility group.
- C. DNS hostnames are required to be FQDN.
- D. The secondary controller IP address is incorrect.

Correct Answer: A

[Latest 300-370 Dumps](#)

[300-370 Practice Test](#)

[300-370 Braindumps](#)



To Read the [Whole Q&As](#), please purchase the [Complete Version](#) from [Our website](#).

Try our product !

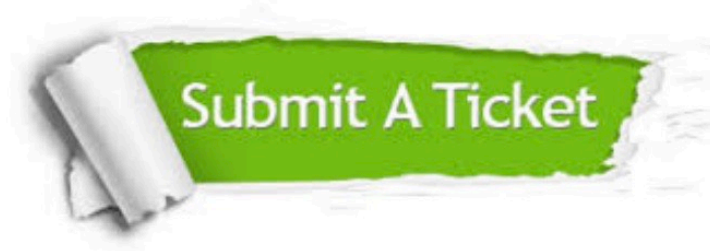
100% Guaranteed Success
100% Money Back Guarantee
365 Days Free Update
Instant Download After Purchase
24x7 Customer Support
Average 99.9% Success Rate
More than 800,000 Satisfied Customers Worldwide
Multi-Platform capabilities - [Windows](#), [Mac](#), [Android](#), [iPhone](#), [iPod](#), [iPad](#), [Kindle](#)

We provide exam PDF and VCE of Cisco, Microsoft, IBM, CompTIA, Oracle and other IT Certifications. You can view Vendor list of All Certification Exams offered:

<https://www.lead4pass.com/allproducts>

Need Help

Please provide as much detail as possible so we can best assist you.
To update a previously submitted ticket:



 <p>One Year Free Update Free update is available within One Year after your purchase. After One Year, you will get 50% discounts for updating. And we are proud to boast a 24/7 efficient Customer Support system via Email.</p>	 <p>Money Back Guarantee To ensure that you are spending on quality products, we provide 100% money back guarantee for 30 days from the date of purchase.</p>	 <p>Security & Privacy We respect customer privacy. We use McAfee's security service to provide you with utmost security for your personal information & peace of mind.</p>
---	---	--

Any charges made through this site will appear as Global Simulators Limited.
All trademarks are the property of their respective owners.
Copyright © lead4pass, All Rights Reserved.