

## 2VB-602<sup>Q&As</sup>

VMware Specialist: vRealize Operations

### Pass VMware 2VB-602 Exam with 100% Guarantee

Free Download Real Questions & Answers **PDF** and **VCE** file from:

<https://www.leads4pass.com/2vb-602.html>

100% Passing Guarantee  
100% Money Back Assurance

Following Questions and Answers are all new published by VMware  
Official Exam Center

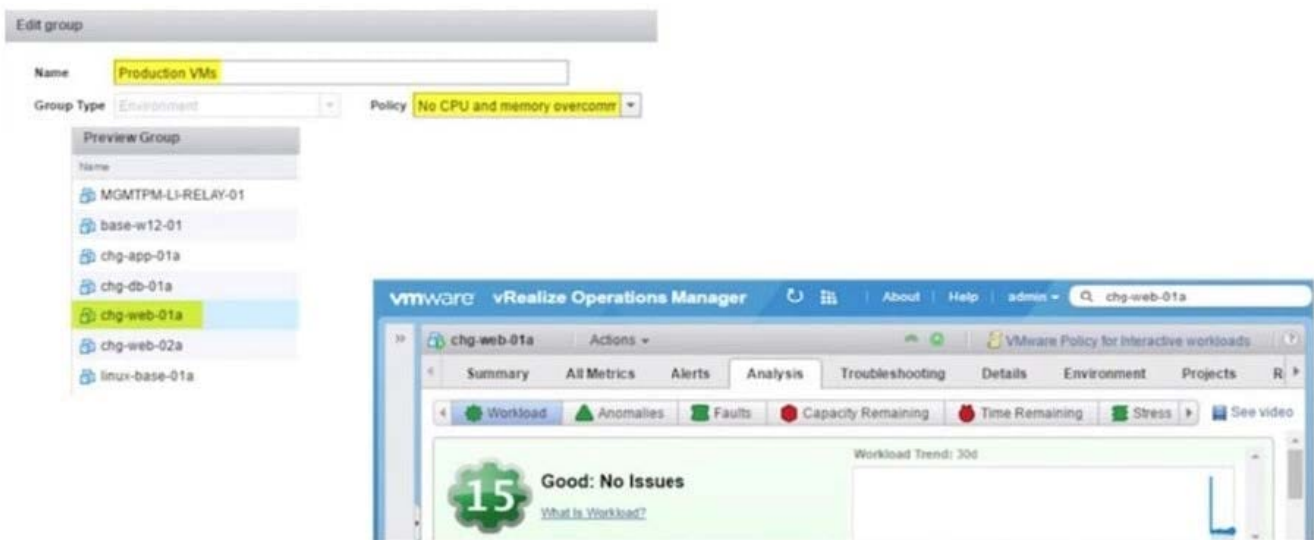
- ⚙️ **Instant Download** After Purchase
- ⚙️ **100% Money Back** Guarantee
- ⚙️ **365 Days** Free Update
- ⚙️ **800,000+** Satisfied Customers



**QUESTION 1**

View the Exhibit.

The VM chg-web-01a is a member of several Custom Groups including the "Production VMs" Custom Group. The "Production VMs" Custom Group is associated with the "No CPU and memory overcommit" Policy.



As shown in the Exhibit, what is the effective policy for this VM?

- A. The VMware Policy for Interactive workloads policy.
- B. The Default policy.
- C. The No CPU and memory overcommit policy
- D. There is no policy associated with the chg-web-01a VM.

Correct Answer: A

**QUESTION 2**

When a user runs the actions to increase CPU count or the amount of memory on a virtual machine, a Power Off Allowed option is included. What is the impact of NOT selecting this option?

- A. The action will NOT complete and NO CPU or memory will be added to the virtual machine.
- B. The action will complete, but CPU or memory may NOT be visible on the guest OS until the OS is rebooted.
- C. The action will notify vCenter to reconfigure the virtual machine the next time it is power-cycled.

D. The virtual machine will be put into suspended mode during the CPU or memory change.

Correct Answer: B

Reference: <https://pubs.vmware.com/vrealizeoperationsmanager-62/index.jsp?topic=%2Fcom.vmware.vcom.core.doc%2FGUID-DC0169D4-ED6C-4E18-8FAA-0088187C3DA6.html>

---

### QUESTION 3

Which statement is true regarding Symptoms? (Choose the best answer.)

- A. No Symptoms can be included in an Alert Definition
- B. Multiple Symptoms can be included in an Alert Definition
- C. Symptoms can only be related to the object defined in the Alert Definition
- D. Symptoms can be nested

Correct Answer: C

Reference: <https://pubs.vmware.com/vrealizeoperationsmanager-6/index.jsp?topic=%2Fcom.vmware.vcom.core.doc%2FGUID-7603DF81-F9A8-45FC-B0A8-3EB798EB74FB.html>

---

### QUESTION 4

What are two reasons to use a Remote Collector? (Choose two.)

- A. To extend the vRealize Operations Manager cluster once the maximum allowed number of data nodes have run out.
- B. To navigate firewalls.
- C. To connect two separate vRealize Operations Manager clusters together.
- D. To connect to and collect from remote data sources.

Correct Answer: AB

Reference: <https://pubs.vmware.com/vrealizeoperationsmanager-6/index.jsp?topic=%2Fcom.vmware.vcom.core.doc%2FGUID-263F9219-E801-4383-8A59-E84F3D01ED6B.html>

---

### QUESTION 5

What are two vRealize Operations (vROps) cluster requirements? (Choose two.)

- A. All nodes must be in the same vSphere cluster but do NOT have to be in the same geographical location.
- B. All nodes must run the same vROps version.
- C. All nodes must collect from the same vCenter version.

D. vApp and Linux deployed nodes must NOT be mixed in the same vROps cluster.

Correct Answer: BD

Reference: <https://pubs.vmware.com/vrealizeoperationsmanager-6/topic/com.vmware.vcom.core.doc/GUID35DC1E13-8CCC-42FE-90A8-73A417DEE625.html> <https://pubs.vmware.com/vrealizeoperationsmanager-6/topic/com.vmware.vcom.core.doc/GUID35DC1E13-8CCC-42FE-90A8-73A417DEE625.html>

[2VB-602 VCE Dumps](#)

[2VB-602 Study Guide](#)

[2VB-602 Braindumps](#)