

## 2V0-631<sup>Q&As</sup>

VMware Certified Professional 6 – Cloud Management and Automation  
Beta Exam

### Pass VMware 2V0-631 Exam with 100% Guarantee

Free Download Real Questions & Answers **PDF** and **VCE** file from:

<https://www.leads4pass.com/2v0-631.html>

100% Passing Guarantee  
100% Money Back Assurance

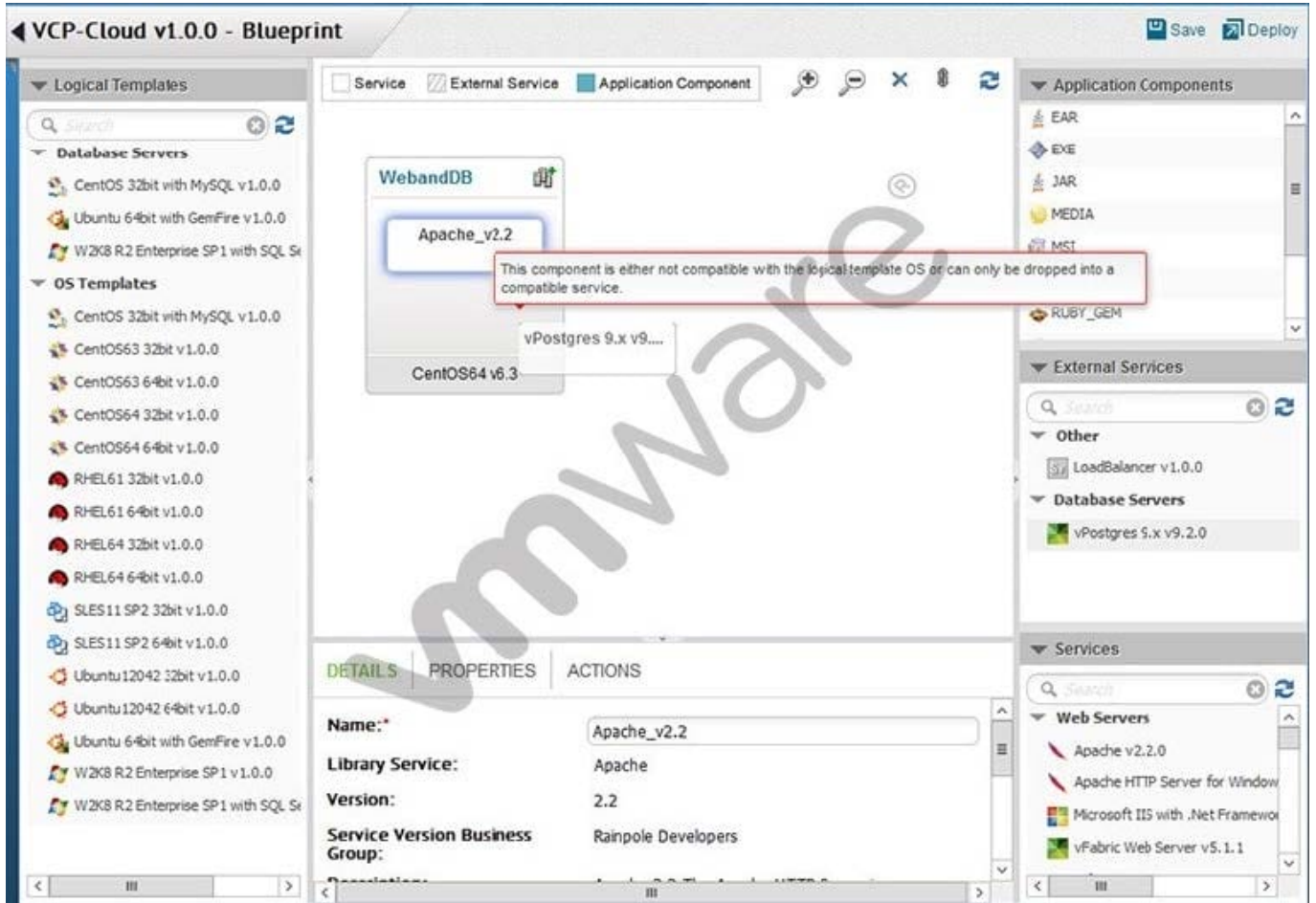
Following Questions and Answers are all new published by VMware  
Official Exam Center

- ⚙️ **Instant Download** After Purchase
- ⚙️ **100% Money Back** Guarantee
- ⚙️ **365 Days** Free Update
- ⚙️ **800,000+** Satisfied Customers



**QUESTION 1**

Refer to the Exhibit.



While building an application blueprint, the administrator cannot add a vPostgres database service to the new operating system, as shown in the exhibit.

What is needed to resolve this?

- A. Drag and drop vPostgres from the Services menu onto the new operating system.
- B. Delete the current operating system and deploy a new Database Server that includes vPostgres.
- C. Drag and drop a vPostgres Application Component to join the existing operating system and vPostgres objects.
- D. Add an External Service Instance Profile to the Deployment Environment.

Correct Answer: A

**QUESTION 2**

An IP address is provisioned from a vRealize Automation Network Profile static IP range. What will happen when the

workload using the IP address is destroyed?

- A. It will be automatically returned to the range for reuse within minutes.
- B. It will be batched with all reclaimable addresses and returned to the range daily.
- C. It will be permanently marked as unavailable for that specific range to prevent IP conflicts.
- D. It will be marked as unavailable until the range is deleted and recreated.

Correct Answer: A

---

### QUESTION 3

An administrator incorrectly enters password information for the darwin\_user account and locks the account.

What procedure can be used to unlock the account?

- A. From the vSphere Web Client, browse to Administration > Access > SSO Users and Groups > Locked Users, right-click on the darwin\_user account and select Unlock.
- B. From the VMRC Console of the Application Services appliance, log in as the root user and enter: faillog -u darwin\_user -r
- C. From the Application Services Remote CLI, log in as the root user and enter: passwd -u darwin\_user
- D. From the Application Services Web Interface, choose Administration from the drop down list and select Users, right-click on the darwin\_user account and select Unlock.

Correct Answer: B

---

### QUESTION 4

Which two fields are required when creating a new property definition in the Property Dictionary? (Choose two.)

- A. Display Name
- B. Description
- C. Property Attributes
- D. Control Type

Correct Answer: AD

---

### QUESTION 5

Users need to provision a complex application that includes Virtual, Physical, and Cloud servers.

What should an administrator do to allow users to request all of the servers for this application in a single request?

A. Create a blueprint for each machine that is part of the application. Create a multi-machine blueprint and add each machine blueprint from the applicable local blueprints. Create a Business Group for users in the department and configure Catalog Management.

B. Create a blueprint for each machine that is part of the application. Create a multi-machine blueprint and add each machine blueprint from the applicable global and local blueprints. Create a Business Group for users in the department and configure Catalog Management.

C. Create a multi-machine local or global blueprint specifying each machine that is part of the application. Create a Business Group for users in the department and configure Catalog Management.

D. Create a multi-machine global blueprint specifying each machine that is part of the application.

Create a Business Group for users in the department and configure Catalog Management.

Correct Answer: A

[Latest 2V0-631 Dumps](#)

[2V0-631 VCE Dumps](#)

[2V0-631 Practice Test](#)