

250-428^{Q&As}

Administration of Symantec Endpoint Protection 14

Pass Symantec 250-428 Exam with 100% Guarantee

Free Download Real Questions & Answers **PDF** and **VCE** file from:

<https://www.leads4pass.com/250-428.html>

100% Passing Guarantee
100% Money Back Assurance

Following Questions and Answers are all new published by Symantec
Official Exam Center

-  **Instant Download** After Purchase
-  **100% Money Back** Guarantee
-  **365 Days** Free Update
-  **800,000+** Satisfied Customers



QUESTION 1

Which two criteria could be used to define Location Awareness for the Symantec Endpoint Protection (SEP) client?
(Choose two.)

- A. geographic location
- B. NIC description
- C. SEP domain
- D. Network Speed
- E. WINS server

Correct Answer: BE

Reference: <https://support.symantec.com/us/en/article.tech97369.html>

QUESTION 2

A company uses a remote administration tool that is detected and quarantined by Symantec Endpoint Protection (SEP).

Which step can an administrator perform to continue using the remote administration tool without detection by SEP?

- A. Create a Tamper Protect exception for the tool
- B. Create an Application to Monitor exception for the tool
- C. Create a Known Risk exception for the tool
- D. Create a SONAR exception for the tool

Correct Answer: C

QUESTION 3

Match the following list of ports used by Symantec Endpoint Protection (SEP) to the defining characteristics by clicking and dragging the port on the left to the corresponding description on the right.

Select and Place:

Ports		
8443	Communication between the embedded database and the SEPM	<input type="checkbox"/>
1433	Communication between a SEPM and a Microsoft SQL Database Server if they reside on separate computers	<input type="checkbox"/>
2967	HTTPS communication between a remote management console and the SEPM	<input type="checkbox"/>
2638	Communication between the SEPM and SEP clients	<input type="checkbox"/>
8014	The Group Update Provider (GUP) proxy functionality of SEP client listens on this port	<input type="checkbox"/>

Correct Answer:

Ports		
<input type="text"/>	Communication between the embedded database and the SEPM	<input type="text" value="2638"/>
<input type="text"/>	Communication between a SEPM and a Microsoft SQL Database Server if they reside on separate computers	<input type="text" value="1433"/>
<input type="text"/>	HTTPS communication between a remote management console and the SEPM	<input type="text" value="8443"/>
<input type="text"/>	Communication between the SEPM and SEP clients	<input type="text" value="8014"/>
<input type="text"/>	The Group Update Provider (GUP) proxy functionality of SEP client listens on this port	<input type="text" value="2967"/>

References: https://support.symantec.com/en_US/article.HOWTO81103.html

QUESTION 4

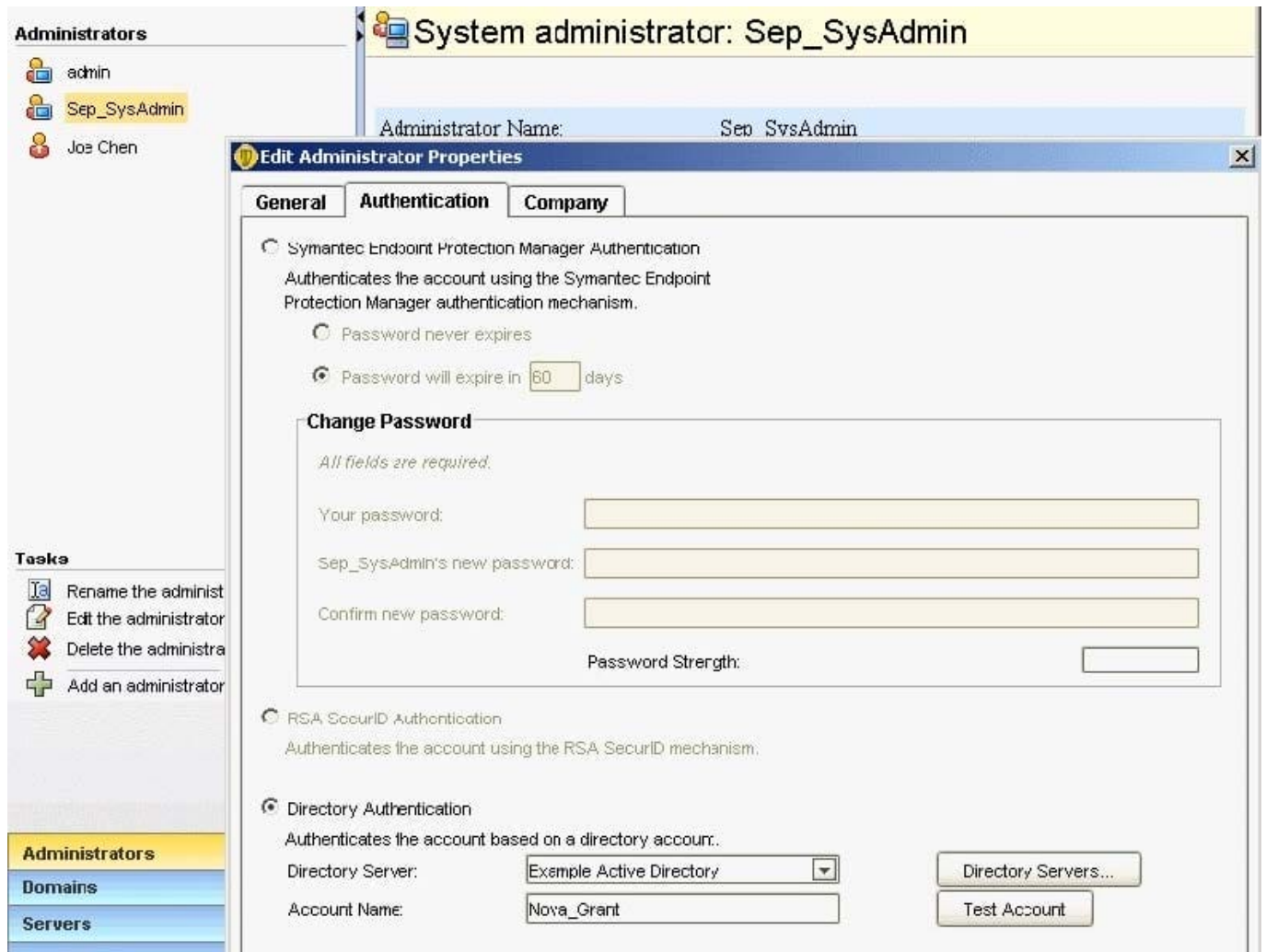
What is a supported migration path for Symantec Endpoint Protection?

- A. Symantec Endpoint Protection Enterprise Edition 12.1 > Symantec Endpoint Protection Small Business Edition 12.1
- B. Symantec Endpoint Protection Small Business Edition 12.1 > Symantec Endpoint Protection Enterprise Edition 12.1
- C. Symantec Endpoint Protection 12.1 Enterprise Edition > Symantec Endpoint Protection 11.x Enterprise Edition
- D. Symantec Endpoint Protection Small Business Edition 12.1 > Symantec Endpoint Protection 11.x Small Business Edition

Correct Answer: D

QUESTION 5

Refer to the exhibit.



An administrator has configured the Symantec Endpoint Protection Manager (SEPM) to use Active Directory authentication. The administrator defines a new Symantec Endpoint Protection administrator named Sep_SysAdmin, configured to use Directory Authentication.

Which password needs to be entered when the administrator logs in to the SEPM console as Sep_SysAdmin?

- A. The password for the Active Directory account Nova_Grant
- B. The password for the SEPM account Nova_Grant
- C. The password for the Active Directory account Sep_SysAdmin
- D. The password for the SEPM account Sep_SysAdmin

Correct Answer: A