

250-371 Q&As

Administration of Symantec NetBackup 7.5 for Windows

Pass Symantec 250-371 Exam with 100% Guarantee

Free Download Real Questions & Answers **PDF** and **VCE** file from:

<https://www.leadspass.com/250-371.html>

100% Passing Guarantee
100% Money Back Assurance

Following Questions and Answers are all new published by Symantec
Official Exam Center

-  **Instant Download** After Purchase
-  **100% Money Back** Guarantee
-  **365 Days** Free Update
-  **800,000+** Satisfied Customers



QUESTION 1

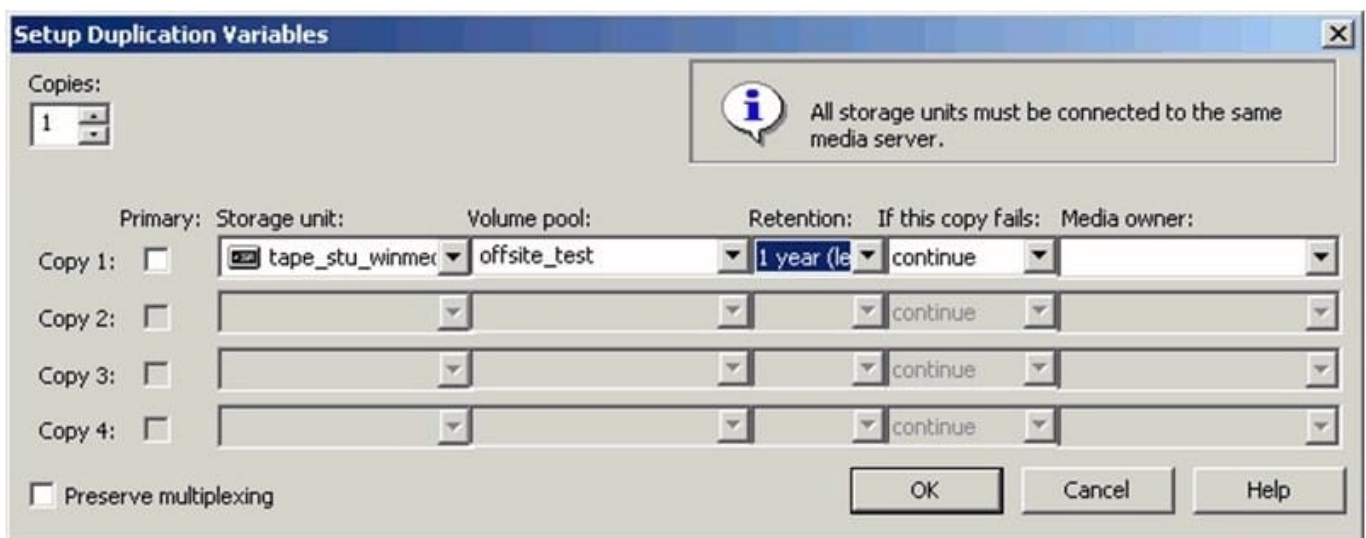
Where is network resiliency configured in Symantec NetBackup 7.5?

- A. Host Properties > master1 > Resilient Network
- B. Host Properties > media1 > Resilient Network
- C. Host Properties > client1 > Network Settings
- D. Host Properties > master1 > Client Attributes

Correct Answer: A

QUESTION 2

Refer to the exhibit.



An administrator needs to create two additional copies of a backup image stored on a tape but the Setup Duplication Variables window will only allow one additional copy to be configured.

What is a likely cause?

- A. The Maximum Backup Copies in the Master Server Host Properties is set to 2.
- B. The Media multiplexing in the schedule is set to 2.
- C. The Maximum Concurrent Jobs property in the Storage Unit is set to 2.
- D. The Limit Jobs per Policy property in the Backup policy is set to 2.

Correct Answer: A

QUESTION 3

In Symantec Control Compliance Suite 9.0, if an administrator wants to evaluate assets compared to a referenced asset, what is used?

- A. reference evaluation
- B. baseline standard
- C. gold standard
- D. policy mapping

Correct Answer: C

QUESTION 4

What is one of the steps that must take place before comparing entitlements of a control point?

- A. generate entitlement report
- B. request to approve entitlements
- C. approve entitlements at least once
- D. approve entitlements at least twice

Correct Answer: C

QUESTION 5

Auto Image Replication is being used to replicate New York backups to London. The New York backups have completed.

What is the next step?

- A. image duplicated to London using a storage lifecycle policy to a Disk Staging Storage Unit
- B. image duplicated to London using a Disk Staging Storage Unit
- C. image duplicated to London using a storage lifecycle policy to a media server deduplication pool
- D. image duplicated to London using Symantec NetBackup Vault to tape

Correct Answer: C

[250-371 PDF Dumps](#)

[250-371 VCE Dumps](#)

[250-371 Practice Test](#)