



200-601^{Q&As}

Managing Industrial Networks for Manufacturing with Cisco Technologies

Pass Cisco 200-601 Exam with 100% Guarantee

Free Download Real Questions & Answers **PDF** and **VCE** file from:

<https://www.lead4pass.com/200-601.html>

100% Passing Guarantee
100% Money Back Assurance

Following Questions and Answers are all new published by Cisco
Official Exam Center

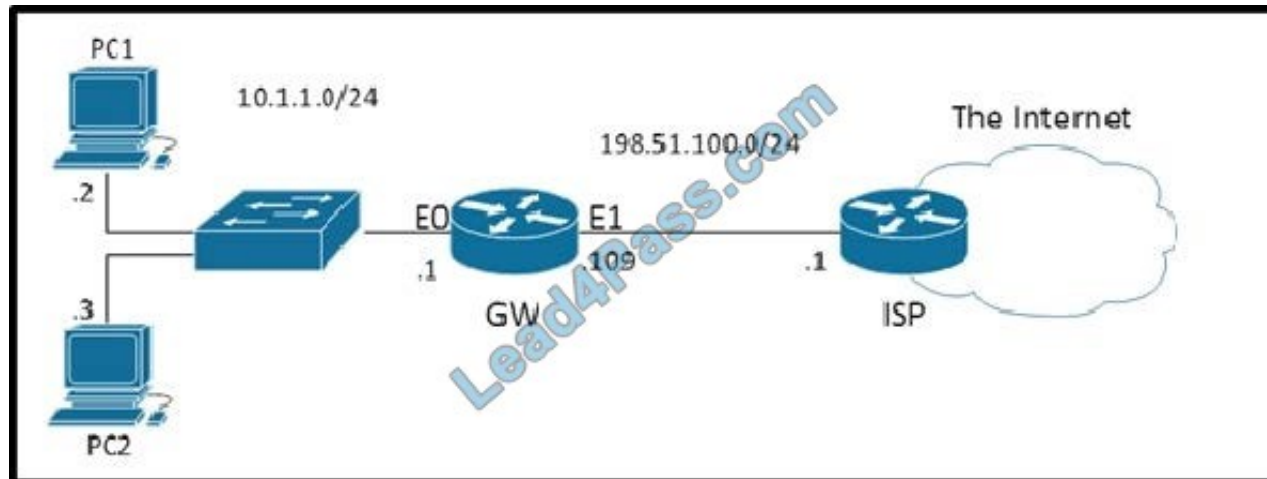
- ⚙ **Instant Download** After Purchase
- ⚙ **100% Money Back** Guarantee
- ⚙ **365 Days** Free Update
- ⚙ **800,000+** Satisfied Customers





QUESTION 1

Refer to the exhibit.



NAT has been configured on the router 'GW' and the IP addresses of router 'GW' have been configured properly. Users of PC1 and PC2 are able to ping the IP address 198.51.100.1 but are unable to reach any other IP addresses on the Internet. The ISP confirmed that their configuration is correct. Which option would likely correct the problem?

- A. ip access-list extended ACL_OUTBOUND permit ip 10.1.1.0 0.0.0.255 any interface Ethernet1 ip access-group ACL_OUTBOUND out
- B. interface Ethernet1 ip nat outside
- C. interface Ethernet0 ip nat inside
- D. ip route 0.0.0.0 0.0.0.0 198.51.100.1

Correct Answer: D

QUESTION 2

If the Link Fault alarm is connected to the minor relay and the FCS Bit Error Rate alarm is connected to the major relay, which commands will create an alarm profile called GigE with the alarms correctly mapped to the minor and major relays?

- A. Switch(config)#alarm profile GigE Switch(config-alarm-prof)#alarm 1 4 Switch(config-alarm-prof)#relay major 4 Switch(config-alarm-prof)#relay minor 1
- B. Switch(config)#alarm profile GigE Switch(config-alarm-prof)#alarm 1 3 Switch(config-alarm-prof)#relay major 3 Switch(config-alarm-prof)#relay minor 1
- C. Switch(config)#alarm profile GigE Switch(config-alarm-prof)#alarm 1 3 Switch(config-alarm-prof)#relay major 1 Switch(config-alarm-prof)#relay minor 3
- D. Switch(config)#alarm profile GigE Switch(config-alarm-prof)#alarm 1 4 Switch(config-alarm-prof)#relay major 1



Switch(config-alarm-prof)#relay minor 4

Correct Answer: A

QUESTION 3

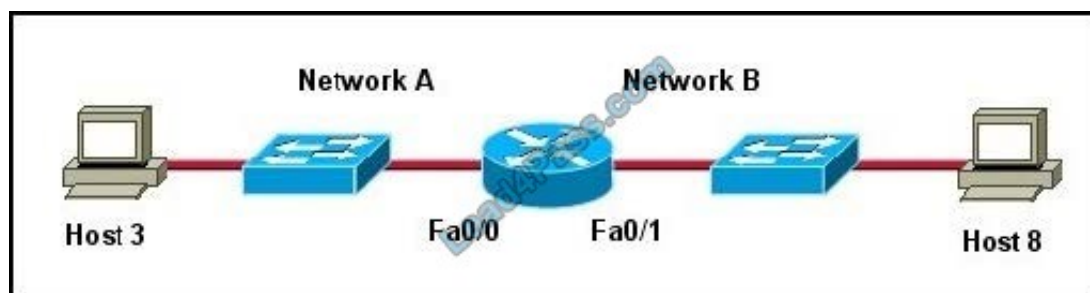
What percentage of an I/O connection would you set the RPI in order to ensure the application has the most current data?

- A. RPI at 50% of IO rate
- B. RPI at 25% of IO rate
- C. PI to 25% of PAC scan rate
- D. Set RPI to 50% of PAC scan rate

Correct Answer: A

QUESTION 4

Exhibit:



Refer to the exhibit. Host 3 on Network A is sending data to Host 8 on Network B. Which address is the default gateway of Host 3?

- A. the address of the switch interface that is connected to router interface Fa0/0
- B. the address of the switch interface that is connected to router interface Fa0/1
- C. the address of the host that is connected to Network A
- D. the address of the host that is connected to Network B
- E. the address of the router interface Fa0/0
- F. the address of the router interface Fa0/1

Correct Answer: E

QUESTION 5



Drag the steps on the left and arrange them in the order they should be completed when commissioning an industrial Ethernet switch on the right.	
Wire the switch to the DC power supply	Step 1
Wire the DC power supply	Step 2
Mount the switch on the DIN rail	Step 3
Connect Patch cords	Step 4
Wire the switch ground to common ground	Step 5
Perform Switch configuration	Step 6

Correct Answer:

Drag the steps on the left and arrange them in the order they should be completed when commissioning an industrial Ethernet switch on the right.	
	Mount the switch on the DIN rail
	Wire the switch ground to common ground
	Wire the DC power supply
	Wire the switch to the DC power supply
	Perform Switch configuration
	Connect Patch cords

[200-601 VCE Dumps](#)

[200-601 Study Guide](#)

[200-601 Braindumps](#)



To Read the [Whole Q&As](#), please purchase the [Complete Version](#) from [Our website](#).

Try our product !

100% Guaranteed Success

100% Money Back Guarantee

365 Days Free Update

Instant Download After Purchase

24x7 Customer Support

Average 99.9% Success Rate

More than 800,000 Satisfied Customers Worldwide

Multi-Platform capabilities - [Windows](#), [Mac](#), [Android](#), [iPhone](#), [iPod](#), [iPad](#), [Kindle](#)

We provide exam PDF and VCE of Cisco, Microsoft, IBM, CompTIA, Oracle and other IT Certifications.
You can view Vendor list of All Certification Exams offered:

<https://www.lead4pass.com/allproducts>

Need Help

Please provide as much detail as possible so we can best assist you.

To update a previously submitted ticket:



 One Year Free Update Free update is available within One Year after your purchase. After One Year, you will get 50% discounts for updating. And we are proud to boast a 24/7 efficient Customer Support system via Email.	 Money Back Guarantee To ensure that you are spending on quality products, we provide 100% money back guarantee for 30 days from the date of purchase.	 Security & Privacy We respect customer privacy. We use McAfee's security service to provide you with utmost security for your personal information & peace of mind.
-------------------------------------------------------------------------------------------------------------------------------------------------------------------------------------------------------------------------------------------------------------------------------------------------------------------------	-----------------------------------------------------------------------------------------------------------------------------------------------------------------------------------------------------------------------------------------------------	------------------------------------------------------------------------------------------------------------------------------------------------------------------------------------------------------------------------------------------------------------------------

Any charges made through this site will appear as Global Simulators Limited.

All trademarks are the property of their respective owners.

Copyright © lead4pass, All Rights Reserved.