



200-120^{Q&As}

Cisco Certified Network Associate Exam

Pass Cisco 200-120 Exam with 100% Guarantee

Free Download Real Questions & Answers **PDF** and **VCE** file from:

<https://www.lead4pass.com/200-120.html>

100% Passing Guarantee
100% Money Back Assurance

Following Questions and Answers are all new published by Cisco
Official Exam Center

-  **Instant Download** After Purchase
-  **100% Money Back** Guarantee
-  **365 Days** Free Update
-  **800,000+** Satisfied Customers





QUESTION 1

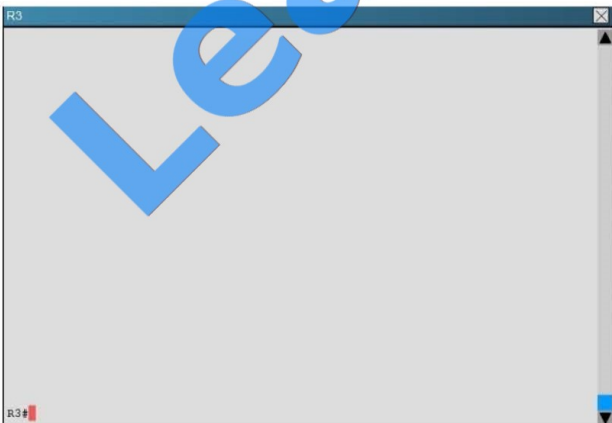
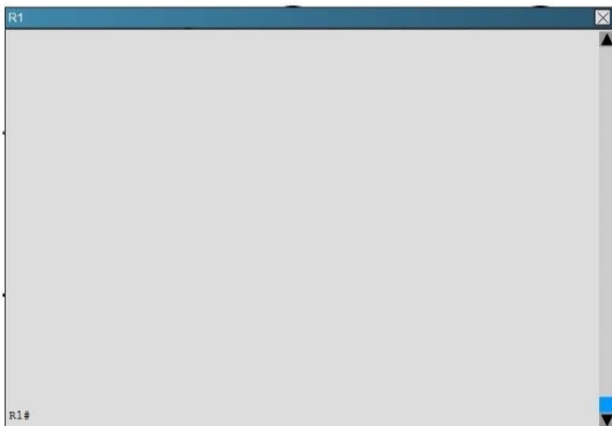
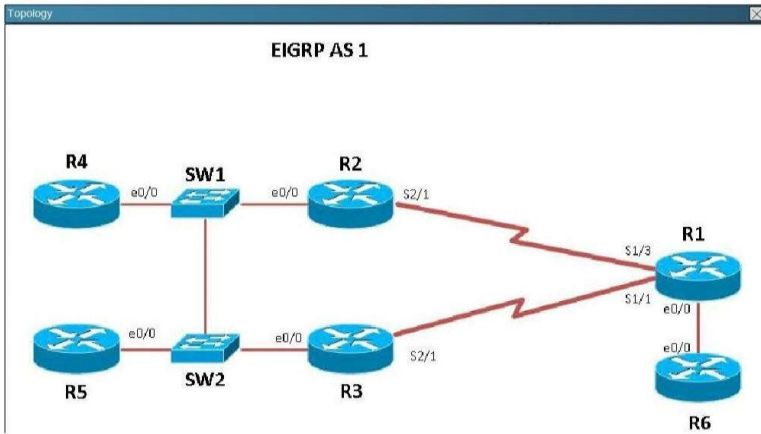
Scenario

Refer to the topology. Your company has connected the routers R1, R2, and R3 with serial links. R2 and R3 are connected to the switches SW1 and SW2, respectively. SW1 and SW2 are also connected to the routers R4 and R5.

The EIGRP routing protocol is configured.

You are required to troubleshoot and resolve the EIGRP issues between the various routers.

Use the appropriate show commands to troubleshoot the issues.





R4

R4#

R5

R5#

R6

R6#

SW1

SW1#

Lead4Pass.com





The loopback interfaces on R4 with the IP addresses of 10.4.4.4/32, 10.4.4.5/32, and 10.4.4.6/32 are not appearing in the routing table of R5. Why are the interfaces missing?

- A. The interfaces are shutdown, so they are not being advertised.
- B. R4 has been incorrectly configured to be in another AS, so it does not peer with R5.
- C. Automatic summarization is enabled, so only the 10.0.0.0 network is displayed.
- D. The loopback addresses haven't been advertised, and the network command is missing on R4.

Correct Answer: B

For an EIGRP neighbor to form, the following must match:

- Neighbors must be in the same subnet
- K values
- AS numbers
- Authentication method and key strings

Here, we see that R4 is configured for EIGRP AS 2, when it should be AS 1.

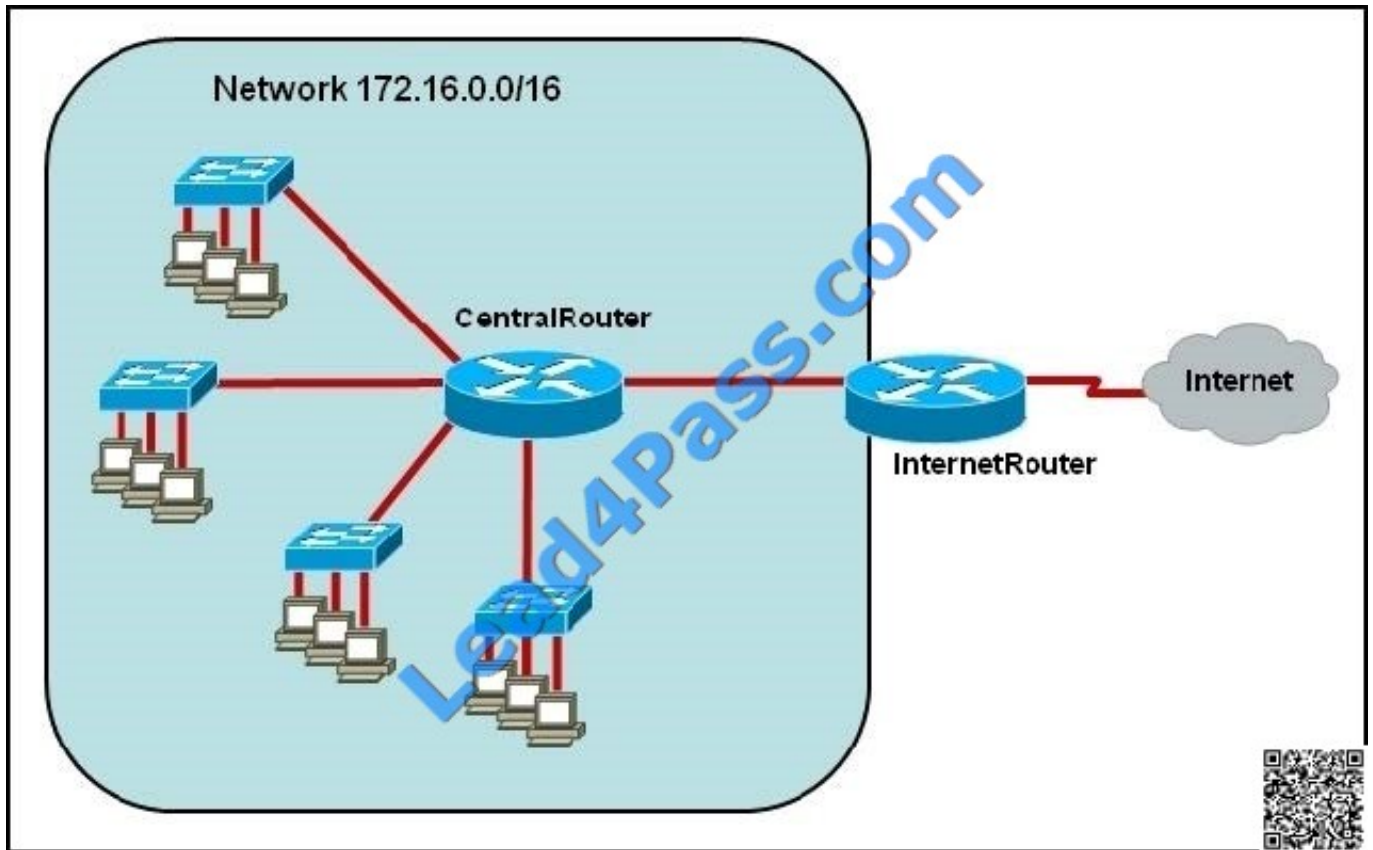


R4	R5
<pre>! interface Ethernet0/2 no ip address shutdown ! interface Ethernet0/3 no ip address shutdown ! ! router eigrp 2 network 10.4.4.4 0.0.0.0 network 10.4.4.5 0.0.0.0 network 10.4.4.6 0.0.0.0 network 192.168.123.0 ! ip forward-protocol nd ! ! no ip http server no ip http secure-server ! ! ! --- More (18) ---</pre>	<pre>interface Ethernet0/2 no ip address shutdown ! interface Ethernet0/3 no ip address shutdown ! ! router eigrp 1 network 10.5.5.5 0.0.0.0 network 10.5.5.55 0.0.0.0 network 10.10.10.0 0.0.0.255 network 192.168.123.0 ! ip forward-protocol nd ! ! no ip http server no ip http secure-server ! ! ! control-plane</pre>



QUESTION 2

Refer to the exhibit.



The network administrator requires easy configuration options and minimal routing protocol traffic. What two options provide adequate routing table information for traffic that passes between the two routers and satisfy the requests of the network administrator? (Choose two.)

- A. a dynamic routing protocol on InternetRouter to advertise all routes to CentralRouter.
- B. a dynamic routing protocol on InternetRouter to advertise summarized routes to CentralRouter.
- C. a static route on InternetRouter to direct traffic that is destined for 172.16.0.0/16 to CentralRouter.
- D. a dynamic routing protocol on CentralRouter to advertise all routes to InternetRouter.
- E. a dynamic routing protocol on CentralRouter to advertise summarized routes to InternetRouter.
- F. a static, default route on CentralRouter that directs traffic to InternetRouter.

Correct Answer: CF

The use of static routes will provide the necessary information for connectivity while producing no routing traffic overhead.

QUESTION 3

Which command can you enter to route all traffic that is destined for 192.168.0.0/20 to a specific interface?

- A. `router(config)#ip route 192.168.0.0 255.255.240.0 GigabitEthernet0/1`

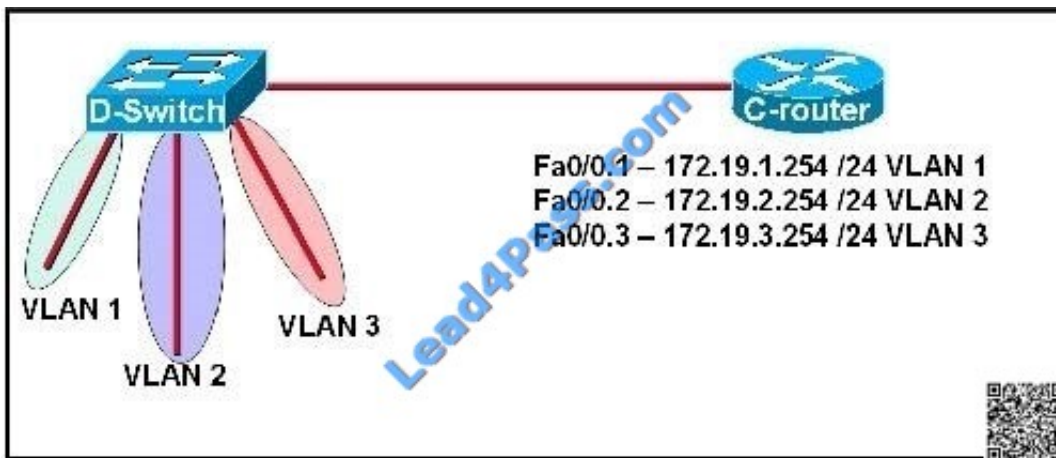


- B. router(config)#ip route 0.0.0.0 255.255.255.0 GigabitEthernet0/1
- C. router(config)#ip route 0.0.0.0 0.0.0.0 GigabitEthernet0/1
- D. router(config)#ip route 192.168.0.0 255.255.255.0 GigabitEthernet0/1

Correct Answer: A

QUESTION 4

Refer to the exhibit.



C-router is to be used as a "router-on-a-stick" to route between the VLANs. All the interfaces have been properly configured and IP routing is operational. The hosts in the VLANs have been configured with the appropriate default gateway. What is true about this configuration?

- A. These commands need to be added to the configuration: C-router(config)# router eigrp 123 C-router(config-router)# network 172.19.0.0
- B. These commands need to be added to the configuration: C-router(config)# router ospf 1 C-router(config-router)# network 172.19.0.0 0.0.3.255 area 0
- C. These commands need to be added to the configuration: C-router(config)# router rip C-router(config-router)# network 172.19.0.0
- D. No further routing configuration is required.

Correct Answer: D

Since all the same router (C-router) is the default gateway for all three VLANs, all traffic destined to a different VLA will be sent to the C-router. The C-router will have knowledge of all three networks since they will appear as directly connected in the routing table. Since the C-router already knows how to get to all three networks, no routing protocols need to be configured.

QUESTION 5

What is a valid HSRP virtual MAC address?



- A. 0000.5E00.01A3
- B. 0007.B400.AE01
- C. 0000.0C07.AC15
- D. 0007.5E00.B301

Correct Answer: C

With HSRP, two or more devices support a virtual router with a fictitious MAC address and unique IP address. There are two version of HSRP.

+

With HSRP version 1, the virtual router's MAC address is 0000.0c07.ACxx , in which xx is the HSRP group.

+

With HSRP version 2, the virtual MAC address if 0000.0C9F.Fxxx, in which xxx is the HSRP group.

Note: Another case is HSRP for IPv6, in which the MAC address range from 0005.73A0.0000 through 0005.73A0.0FFF.

[200-120 VCE Dumps](#)

[200-120 Study Guide](#)

[200-120 Braindumps](#)



To Read the [Whole Q&As](#), please purchase the [Complete Version](#) from [Our website](#).

Try our product !

100% Guaranteed Success
100% Money Back Guarantee
365 Days Free Update
Instant Download After Purchase
24x7 Customer Support
Average 99.9% Success Rate
More than 800,000 Satisfied Customers Worldwide
Multi-Platform capabilities - [Windows](#), [Mac](#), [Android](#), [iPhone](#), [iPod](#), [iPad](#), [Kindle](#)

We provide exam PDF and VCE of Cisco, Microsoft, IBM, CompTIA, Oracle and other IT Certifications. You can view Vendor list of All Certification Exams offered:

<https://www.lead4pass.com/allproducts>

Need Help

Please provide as much detail as possible so we can best assist you.
To update a previously submitted ticket:



 <p>One Year Free Update Free update is available within One Year after your purchase. After One Year, you will get 50% discounts for updating. And we are proud to boast a 24/7 efficient Customer Support system via Email.</p>	 <p>Money Back Guarantee To ensure that you are spending on quality products, we provide 100% money back guarantee for 30 days from the date of purchase.</p>	 <p>Security & Privacy We respect customer privacy. We use McAfee's security service to provide you with utmost security for your personal information & peace of mind.</p>
---	---	--

Any charges made through this site will appear as Global Simulators Limited.
All trademarks are the property of their respective owners.
Copyright © lead4pass, All Rights Reserved.