



200-120^{Q&As}

Cisco Certified Network Associate Exam

Pass Cisco 200-120 Exam with 100% Guarantee

Free Download Real Questions & Answers **PDF** and **VCE** file from:

<https://www.lead4pass.com/200-120.html>

100% Passing Guarantee
100% Money Back Assurance

Following Questions and Answers are all new published by Cisco
Official Exam Center

-  **Instant Download** After Purchase
-  **100% Money Back** Guarantee
-  **365 Days** Free Update
-  **800,000+** Satisfied Customers





QUESTION 1

Which command displays CPU utilization?

- A. show protocols
- B. show process
- C. show system
- D. show version

Correct Answer: B

The "show process" (in fact, the full command is "show processes") command gives us lots of information about each process but in fact it is not easy to read. Below shows the output of this command (some next pages are omitted).

```
Router#show process
CPU utilization for five seconds: 0%/0%; one minute: 0%; five minutes: 0%
PID QTy PC Runtime (ms) Invoked uSecs Stacks TTY Process
 1 Cwe 6048DB4C 0 1 0 5604/6000 0 Chunk Manager
 2 Csp 604BCD68 0 15 0 2632/3000 0 Load Meter
 3 M* 0 28 20 140010724/12000 0 Exec
 5 Mwe 61496B84 0 1 0 23460/24000 0 EDDRI_MAIN
 6 Lst 6049C5E4 88 10 8800 5632/6000 0 Check heaps
 7 Cwe 604A2754 0 1 0 5592/6000 0 Pool Manager
 8 Mst 603D219C 0 2 0 5580/6000 0 Timers
 9 Mwe 600245DC 0 2 0 5584/6000 0 Serial Backgroun
10 Mwe 602D6BB4 0 2 0 5680/6000 0 IPC Dynamic Cach
11 Mwe 602CEF94 0 1 0 5636/6000 0 IPC Zone Manager
12 Mwe 602CECF4 0 75 0 5708/6000 0 IPC Periodic Tim
13 Mwe 602CEC3C 4 77 51 5624/6000 0 IPC Deferred Por
14 Mwe 602CEDA8 4 1 4000 5596/6000 0 IPC Seat Manager
15 Mwe 603A4900 0 2 0 5576/6000 0 AAA high-capacit
16 Mwe 60547C20 0 1 0 11604/12000 0 OIR Handler
17 Msi 60572C2C 0 4 0 5600/6000 0 Environmental mo
19 Mwe 6057B190 4 5 800 5588/6000 0 ARP Input
20 Mwe 6079D838 0 19 0 5660/6000 0 HC Counter Timer
21 Mwe 6081D4A0 0 2 0 5576/6000 0 DDR Timers
22 Lwe 60A9AE28 0 3 0 5532/6000 0 Entity MIB
23 Mwe 613B56A0 0 2 0 5584/6000 0 ATM Idle T
```

A more friendly way to check the CPU utilization is the command "show processes cpu history", in which the total CPU usage on the router over a period of time: one minute, one hour, and 72 hours are clearly shown:



QUESTION 2

What are the three things that the Netflow uses to consider the traffic to be in a same flow? (Choose three)

- A. IP address
- B. Interface name
- C. Port numbers
- D. L3 protocol type
- E. MAC address

Correct Answer: ACD

What is an IP Flow?

Each packet that is forwarded within a router or switch is examined for a set of IP packet attributes. These attributes are the IP packet identity or fingerprint of the packet and determine if the packet is unique or similar to other packets.

Traditionally, an IP Flow is based on a set of 5 and up to 7 IP packet attributes.

IP Packet attributes used by NetFlow:

+

IP source address

+

IP destination address

+

Source port

+

Destination port

+

Layer 3 protocol type

+

Class of Service

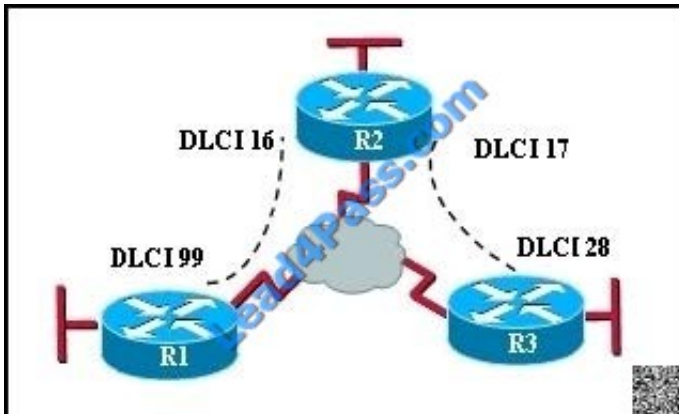
+

Router or switch interface

QUESTION 3



Refer to the exhibit.



In the Frame Relay network, which IP addresses would be assigned to the interfaces with point-to-point PVCs?

- A. DLCI 16: 192.168.10.1 /24 DLCI 17: 192.168.10.1 /24 DLCI 99: 192.168.10.2 /24 DLCI 28: 192.168.10.3 /24
- B. DLCI 16: 192.168.10.1 /24 DLCI 17: 192.168.11.1 /24 DLCI 99: 192.168.12.1 /24 DLCI 28: 192.168.13.1 /24
- C. DLCI 16: 192.168.10.1 /24 DLCI 17: 192.168.11.1 /24 DLCI 99: 192.168.10.2 /24 DLCI 28: 192.168.11.2 /24
- D. DLCI 16: 192.168.10.1 /24 DLCI 17: 192.168.10.2 /24 DLCI 99: 192.168.10.3 /24 DLCI 28: 192.168.10.4 /24

Correct Answer: C

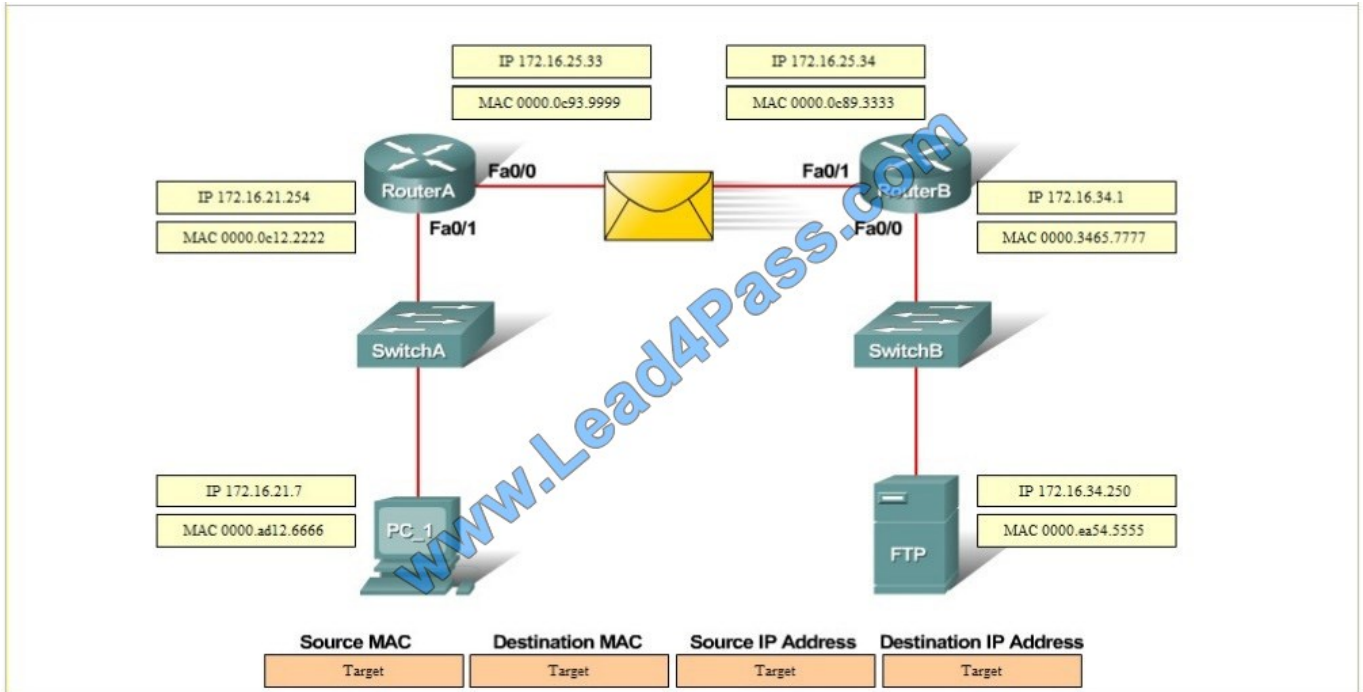
With point to point PVC's, each connection needs to be in a separate subnet. The R2-R1 connection (DLCI 16 to 99) would have each router within the same subnet. Similarly, the R3-R1 connection would also be in the same subnet, but it must be in a different one than the R2-R1 connection.

QUESTION 4

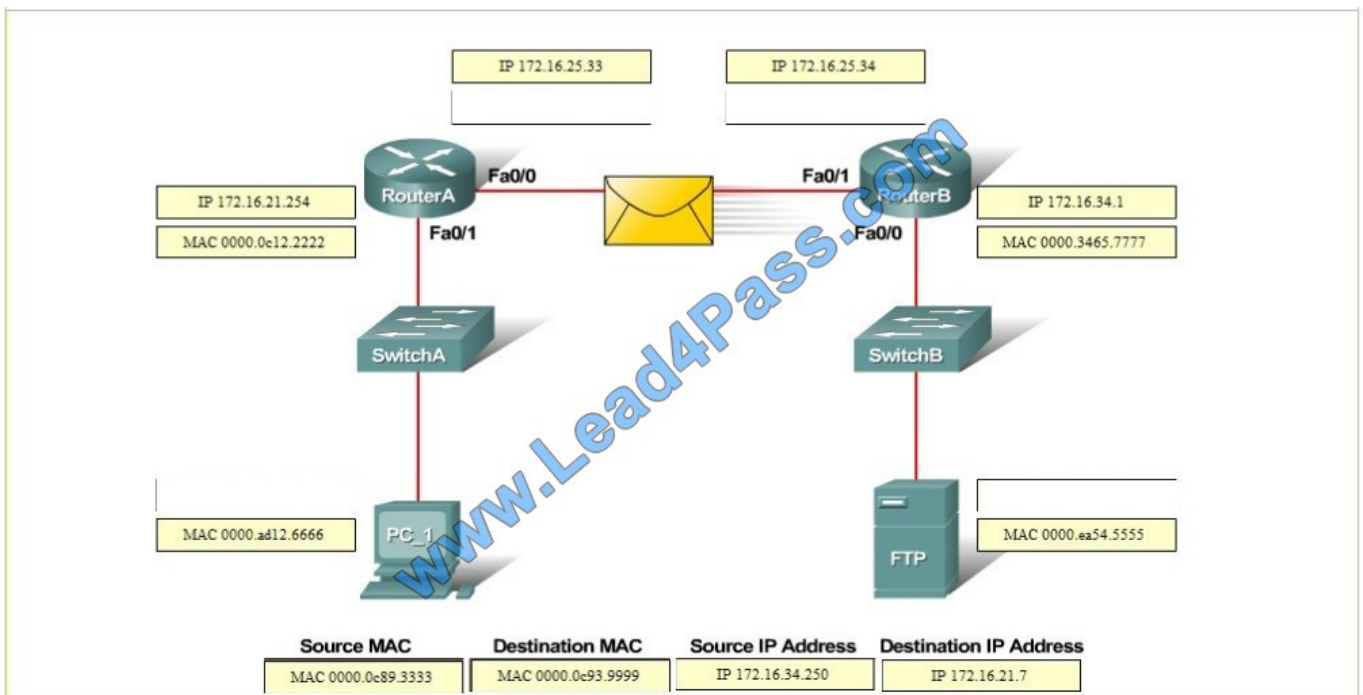
DRAG DROP

Refer to the exhibit. PC_1 is exchanging packets with the FTP server. Consider the packets as they leave RouterB interface Fa0/1 towards RouterA. Drag the correct frame and packet addresses to their place in the table.

Select and Place:



Correct Answer:



QUESTION 5

Which command allows you to verify the encapsulation type (CISCO or IETF) for a Frame Relay link?

A. show frame-relay lmi



- B. show frame-relay map
- C. show frame-relay pvc
- D. show interfaces serial

Correct Answer: B

When connecting Cisco devices with non-Cisco devices, you must use IETF4 encapsulation on both devices. Check the encapsulation type on the Cisco device with the show frame-relay map exec command.

[200-120 Practice Test](#)

[200-120 Study Guide](#)

[200-120 Braindumps](#)



To Read the [Whole Q&As](#), please purchase the [Complete Version](#) from [Our website](#).

Try our product !

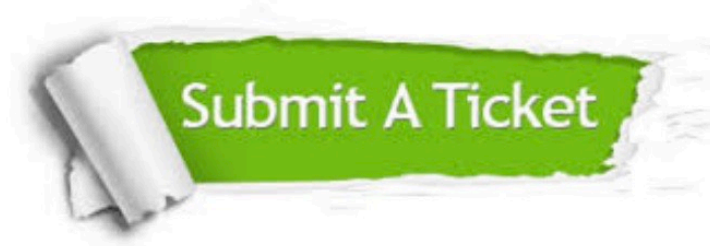
100% Guaranteed Success
100% Money Back Guarantee
365 Days Free Update
Instant Download After Purchase
24x7 Customer Support
Average 99.9% Success Rate
More than 800,000 Satisfied Customers Worldwide
Multi-Platform capabilities - [Windows](#), [Mac](#), [Android](#), [iPhone](#), [iPod](#), [iPad](#), [Kindle](#)

We provide exam PDF and VCE of Cisco, Microsoft, IBM, CompTIA, Oracle and other IT Certifications. You can view Vendor list of All Certification Exams offered:

<https://www.lead4pass.com/allproducts>

Need Help

Please provide as much detail as possible so we can best assist you.
To update a previously submitted ticket:



 <p>One Year Free Update Free update is available within One Year after your purchase. After One Year, you will get 50% discounts for updating. And we are proud to boast a 24/7 efficient Customer Support system via Email.</p>	 <p>Money Back Guarantee To ensure that you are spending on quality products, we provide 100% money back guarantee for 30 days from the date of purchase.</p>	 <p>Security & Privacy We respect customer privacy. We use McAfee's security service to provide you with utmost security for your personal information & peace of mind.</p>
---	---	--

Any charges made through this site will appear as Global Simulators Limited.
All trademarks are the property of their respective owners.
Copyright © lead4pass, All Rights Reserved.