



200-101^{Q&As}

Interconnecting Cisco Networking Devices Part 2 (ICND2)

Pass Cisco 200-101 Exam with 100% Guarantee

Free Download Real Questions & Answers **PDF** and **VCE** file from:

<https://www.lead4pass.com/200-101.html>

100% Passing Guarantee
100% Money Back Assurance

Following Questions and Answers are all new published by Cisco
Official Exam Center

-  **Instant Download** After Purchase
-  **100% Money Back** Guarantee
-  **365 Days** Free Update
-  **800,000+** Satisfied Customers





QUESTION 1

Refer to the exhibit.

```
R1# show frame-relay map  
Serial0/0 (up): ip 172.16.3.1 dlci 100 (0x64, 0x1840), dynamic  
broadcast, status defined, active
```

What is the meaning of the term dynamic as displayed in the output of the show frame-relay map command shown?

- A. The Serial0/0 interface is passing traffic.
- B. The DLCI 100 was dynamically allocated by the router
- C. The Serial0/0 interface acquired the IP address of 172.16.3.1 from a DHCP server
- D. The DLCI 100 will be dynamically changed as required to adapt to changes in the Frame Relay cloud
- E. The mapping between DLCI 100 and the end station IP address 172.16.3.1 was learned through Inverse ARP

Correct Answer: E

The term dynamic indicates that the DLCI number and the remote router IP address 172.16.3.1 are learned via the Inverse ARP process. Inverse ARP is a technique by which dynamic mappings are constructed in a network, allowing a device such as a router to locate the logical network address and associate it with a permanent virtual circuit (PVC).

QUESTION 2

Refer to the exhibit.

```
R2# show ip interface brief
```

| Interface | IP-Address | Ok? | Method | Status | Protocol |
|-----------|---------------|-----|--------|-----------------------|----------|
| Fa0/0 | 172.16.109.62 | YES | manual | up | up |
| Serial0/0 | unassigned | YES | unset | administratively down | down |
| Serial0/1 | 172.16.109.5 | YES | manual | up | up |

Assuming that the entire network topology is shown, what is the operational status of the interfaces of R2 as indicated by the command output shown?

- A. One interface has a problem.
- B. Two interfaces have problems.
- C. The interfaces are functioning correctly.



D. The operational status of the interfaces cannot be determined from the output shown.

Correct Answer: C

R2 has setup with two interface s0/1 and fa0/0 and both are interfaces configured with IP address and up. "show ip interface brief" showing the status of R2 interfaces.

QUESTION 3

Which commands are required to properly configure a router to run OSPF and to add network 192.168.16.0/24 to OSPF area 0? (Choose two.)

- A. Router(config)# router ospf 0
- B. Router(config)# router ospf 1
- C. Router(config)# router ospf area 0
- D. Router(config-router)# network 192.168.16.0 0.0.0.255 0
- E. Router(config-router)# network 192.168.16.0 0.0.0.255 area 0
- F. Router(config-router)# network 192.168.16.0 255.255.255.0 area 0

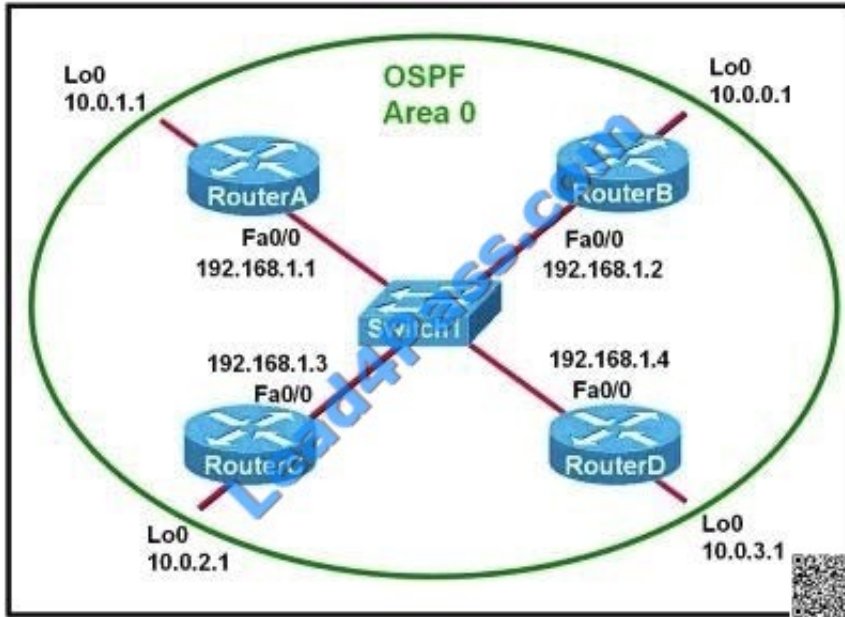
Correct Answer: BE

In the router ospf

Command, the ranges from 1 to 65535 so 0 is an invalid number - B is correct but A is not correct. To configure OSPF, we need a wildcard in the "network" statement, not a subnet mask. We also need to assign an area to this process - E is correct.

QUESTION 4

Refer to the exhibit.



Which two statements are true about the loopback address that is configured on RouterB? (Choose two.)

- A. It ensures that data will be forwarded by RouterB.
- B. It provides stability for the OSPF process on RouterB.
- C. It specifies that the router ID for RouterB should be 10.0.0.1.
- D. It decreases the metric for routes that are advertised from RouterB.
- E. It indicates that RouterB should be elected the DR for the LAN.

Correct Answer: BC

A loopback interface never comes down even if the link is broken so it provides stability for the OSPF process (for example we use that loopback interface as the router-id) - B is correct.

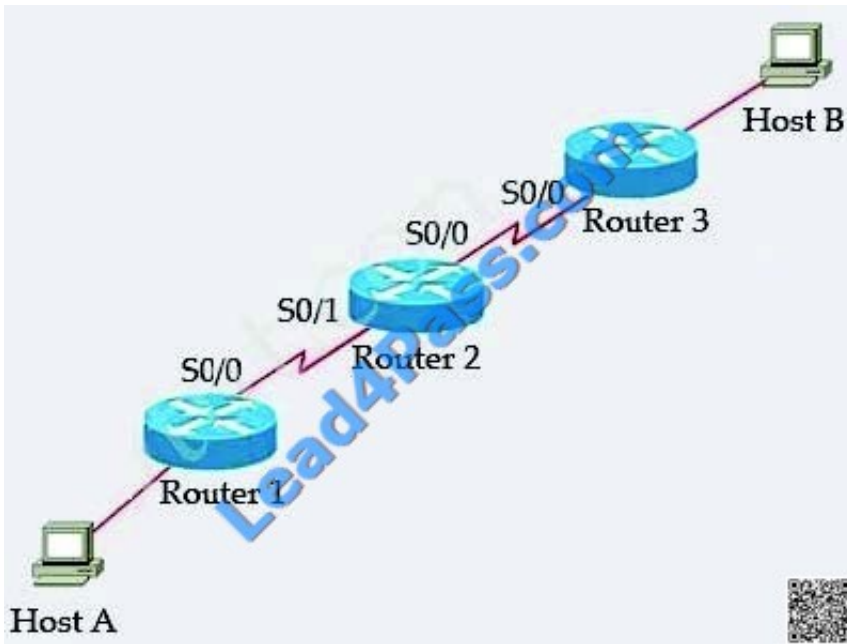
The router-ID is chosen in the order below:

The highest IP address assigned to a loopback (logical) interface. If a loopback interface is not defined, the highest IP address of all active router's physical interfaces will be chosen.

-The loopback interface will be chosen as the router ID of RouterB - C is correct.

QUESTION 5

Refer to the exhibit.

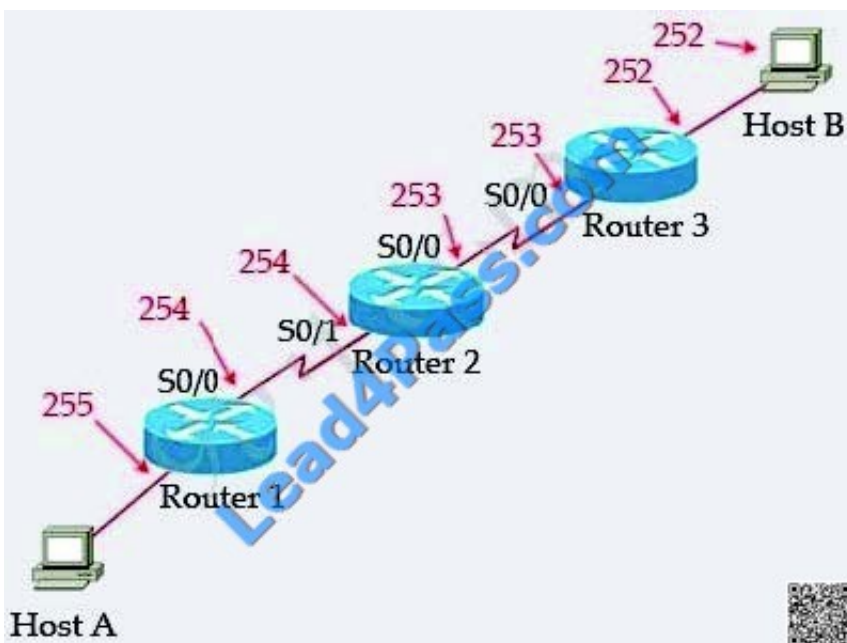


Host A pings interface S0/0 on router 3, what is the TTL value for that ping?

- A. 253
- B. 252 C. 255
- D. 254

Correct Answer: A

From the CCNA ICND2 Exam book: "Routers decrement the TTL by 1 every time they forward a packet; if a router decrements the TTL to 0, it throws away the packet. This prevents packets from rotating forever." I want to make it clear that before the router forwards a packet, the TTL is still remain the same. For example in the topology above, pings to S0/1 and S0/0 of Router 2 have the same TTL.





The picture below shows TTL values for each interface of each router and for Host B. Notice that Host A initializes ICMP packet with a TTL of 255:

[200-101 VCE Dumps](#)

[200-101 Practice Test](#)

[200-101 Braindumps](#)



To Read the [Whole Q&As](#), please purchase the [Complete Version](#) from [Our website](#).

Try our product !

100% Guaranteed Success
100% Money Back Guarantee
365 Days Free Update
Instant Download After Purchase
24x7 Customer Support
Average 99.9% Success Rate
More than 800,000 Satisfied Customers Worldwide
Multi-Platform capabilities - [Windows](#), [Mac](#), [Android](#), [iPhone](#), [iPod](#), [iPad](#), [Kindle](#)

We provide exam PDF and VCE of Cisco, Microsoft, IBM, CompTIA, Oracle and other IT Certifications. You can view Vendor list of All Certification Exams offered:

<https://www.lead4pass.com/allproducts>

Need Help

Please provide as much detail as possible so we can best assist you.
To update a previously submitted ticket:



| | | |
|---------------------------------------------------------------------------------------------------------------------------------------------------------------------------------------------------------------------------------------------------------------------------------------------------------------------------------|-------------------------------------------------------------------------------------------------------------------------------------------------------------------------------------------------------------------------------------------------------------|------------------------------------------------------------------------------------------------------------------------------------------------------------------------------------------------------------------------------------------------------------------------------------|
|  <p>One Year Free Update Free update is available within One Year after your purchase. After One Year, you will get 50% discounts for updating. And we are proud to boast a 24/7 efficient Customer Support system via Email.</p> |  <p>Money Back Guarantee To ensure that you are spending on quality products, we provide 100% money back guarantee for 30 days from the date of purchase.</p> |  <p>Security & Privacy We respect customer privacy. We use McAfee's security service to provide you with utmost security for your personal information & peace of mind.</p> |
|---------------------------------------------------------------------------------------------------------------------------------------------------------------------------------------------------------------------------------------------------------------------------------------------------------------------------------|-------------------------------------------------------------------------------------------------------------------------------------------------------------------------------------------------------------------------------------------------------------|------------------------------------------------------------------------------------------------------------------------------------------------------------------------------------------------------------------------------------------------------------------------------------|

Any charges made through this site will appear as Global Simulators Limited.
All trademarks are the property of their respective owners.
Copyright © lead4pass, All Rights Reserved.