

1Z0-997-20^{Q&As}

Oracle Cloud Infrastructure 2020 Architect Professional

Pass Oracle 1Z0-997-20 Exam with 100% Guarantee

Free Download Real Questions & Answers **PDF** and **VCE** file from:

<https://www.leads4pass.com/1z0-997-20.html>

100% Passing Guarantee
100% Money Back Assurance

Following Questions and Answers are all new published by Oracle
Official Exam Center

-  **Instant Download** After Purchase
-  **100% Money Back** Guarantee
-  **365 Days** Free Update
-  **800,000+** Satisfied Customers



QUESTION 1

Which of the two options are true for an autonomous database in dedicated infrastructure deployment? (Choose two.)

- A. You can modify maintenance schedule of the AVM after provisioning, to match your organization maintenance schedules.
- B. The new resource model consists of autonomous exadata infrastructure, autonomous container database and autonomous database.
- C. Unlike autonomous database in shared infrastructure, you can customize the maintenance schedule of the autonomous databases in dedicated infrastructure in OCI public cloud.
- D. The new resource model consists of exadata infrastructure, autonomous Exadata VM cluster, autonomous container database.
- E. Network selection, License model and certificate management are resources configured at AVM level.

Correct Answer: DE

QUESTION 2

You are trying to troubleshoot the configuration of your Oracle Cloud Infrastructure (OCI) Load Balancing service. You have a backend HTTP service for which you have created a backend set in the load balancer. You have configured health checks for the backend set. Although the health checks appear good, customers sometimes experience transaction failures.

Which of the following options will definitely lead to this problem?

- A. You are NOT using regional subnets in your Virtual Cloud Network. With Availability Domain (AD) specific subnet. the compute instances of the backend service running in the subnet have issues when the AD is down.
- B. You are using OCI Domain Name System. You have misconfigured the '\\A\\' record with the wrong IP address leading to requests not getting routed correctly.
- C. You are using iSCSI for block volume attachment to the compute instances in your backed HTTP service. TCP/IP configuration of your block volume attachment is not configured correctly, leading to issues in your backend service.
- D. You are running a TCP-level health check against your HTTP service. The TCP handshake can succeed and indicate that the service is up even when the HTTP service has issues.

Correct Answer: D

QUESTION 3

You are responsible for a web application deployed on a set of compute VM instances in Oracle Cloud Infrastructure (OCI). Your application stores data on block volumes.

In production, the business requirement is a Recovery Point Objective (RPO) of two hours and that data should be recoverable in case of a regional failure.

How would you meet the RPO requirement in the event of a failure?

- A. Create a user-defined storage backup policy and attach a schedule of type "Hourly" and automatically copy to another region. Apply this policy to a volume group containing the block volumes.
- B. Store hourly block volume backups to an NVMe device attached to a compute instance in a different Availability Domain (AD).
- C. Configure your application to use synchronous primary-secondary data replication between ADs.
- D. Set up cross-region volume replication to replicate the block volumes to a different OCI region.

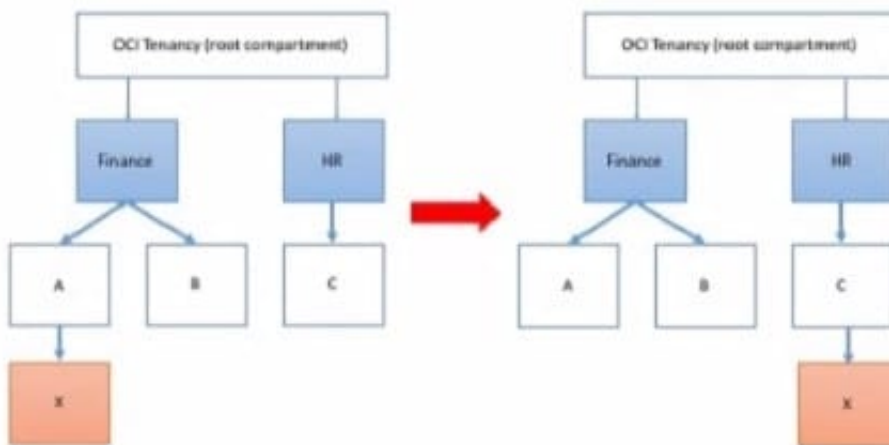
Correct Answer: C

QUESTION 4

Your customer has gone through a recent departmental re structure. As part of this change, they are organizing their Oracle Cloud Infrastructure (OCI) compartment structure to align with the company's new organizational structure.

They have made the following change:

Compartment x is moved, and its parent compartment is now compartment c.



Policy defined in compartment A: Allow group networkadmins to manage subnets in compartment X
 Policy defined in root compartment: Allow group admins to read subnets in compartment Finance:A:X
 After you move the compartment, which two IAM policies would be required to ensure both groups retain the same permissions to compartment X that they had before? (Choose two.)

- A. Define a policy in the root compartment as follows: Allow group admins to manage subnets in compartment Finance:A:X
- B. Define a policy in compartment HR as follows: Allow group networkadmins to manage subnets in compartment C:X.
- C. Define a policy in the root compartment as follows: Allow group admins to read subnets in compartment HR:C:X
- D. Define a policy in compartment C as follows: Allow group networkadmins to read subnets in compartment X

Correct Answer: BC

QUESTION 5

You have been asked to review some network proposals by a major client. The client's IT director needs to provision two Virtual Cloud Network (VCN) for a major application. Both applications use a large number of virtual machine instances, and so will ideally occupy VCNs with as many address spaces as possible. Additionally, in the future, VCN peering will be required to allow communication between the VCNs.

Which of the following are valid IP ranges to consider for the VCNs?

- A. 10.0.0.0/24 and 10.0.1.0/24
- B. 10.0.1.0/24 and 10.0.1.0/27
- C. 10.0.0.0/16 and 10.0.64.0/24
- D. 10.0.0.0/8 and 11.0.0.0/8

Correct Answer: A

[1Z0-997-20 VCE Dumps](#)

[1Z0-997-20 Practice Test](#)

[1Z0-997-20 Exam Questions](#)