

1Z0-632^{Q&As}

PeopleSoft PeopleTools 8.5x Implementation Essentials

Pass Oracle 1Z0-632 Exam with 100% Guarantee

Free Download Real Questions & Answers **PDF** and **VCE** file from:

<https://www.leads4pass.com/1z0-632.html>

100% Passing Guarantee
100% Money Back Assurance

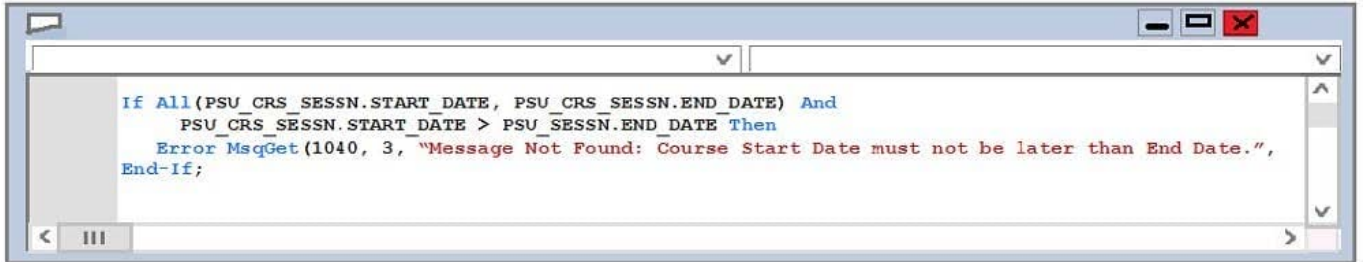
Following Questions and Answers are all new published by Oracle
Official Exam Center

-  **Instant Download** After Purchase
-  **100% Money Back** Guarantee
-  **365 Days** Free Update
-  **800,000+** Satisfied Customers



QUESTION 1

The following PeopleCode program compares two editable fields on a component.



```
If All (PSU_CRS_SESSN.START_DATE, PSU_CRS_SESSN.END_DATE) And
    PSU_CRS_SESSN.START_DATE > PSU_SESSN.END_DATE Then
    Error MsgGet (1040, 3, "Message Not Found: Course Start Date must not be later than End Date.",
End-If;
```

On which event or events should the program be placed?

- A. FieldEdit and RowInit
- B. SaveEdit and SavePreChange
- C. SaveEdit
- D. FieldChange and SavePreChange
- E. SaveEdit and RowInit
- F. FieldEdit

Correct Answer: B

Reference: https://docs.oracle.com/cd/E41633_01/pt853pbh1/eng/pt/tpcd/task_PeopleCodeEvents074aba.html

QUESTION 2

At what occurs level is the Reviewer Details scroll area?

Empl ID 00001 Aguilar, Cornelia

Personal Details

Review Details Find | View all First ◀ 1 of 3 ▶ Last + -

Review for Year 2007 + -

Reviewer Details Find | View all First ◀ 1 of 2 ▶ Last + -

Review Type Employee SelfAssessment + -

Reviewer ID 00001 Aguilar, Cornelia

Review Factors Personalize | Find | [?] | [X] First ◀ 1 of 1 ▶ Last

*review Factor	Description	Factor Weight (%)	*Rating
1		25.0	Too new to rate

- A. 1
- B. 3
- C. 2
- D. 4
- E. 0

Correct Answer: A

Reference: https://docs.oracle.com/cd/E25688_01/pt852pbr0/eng/psbooks/tapd/htm/tapd14.htm

QUESTION 3

Which statement is correct about the following PeopleCode statement?

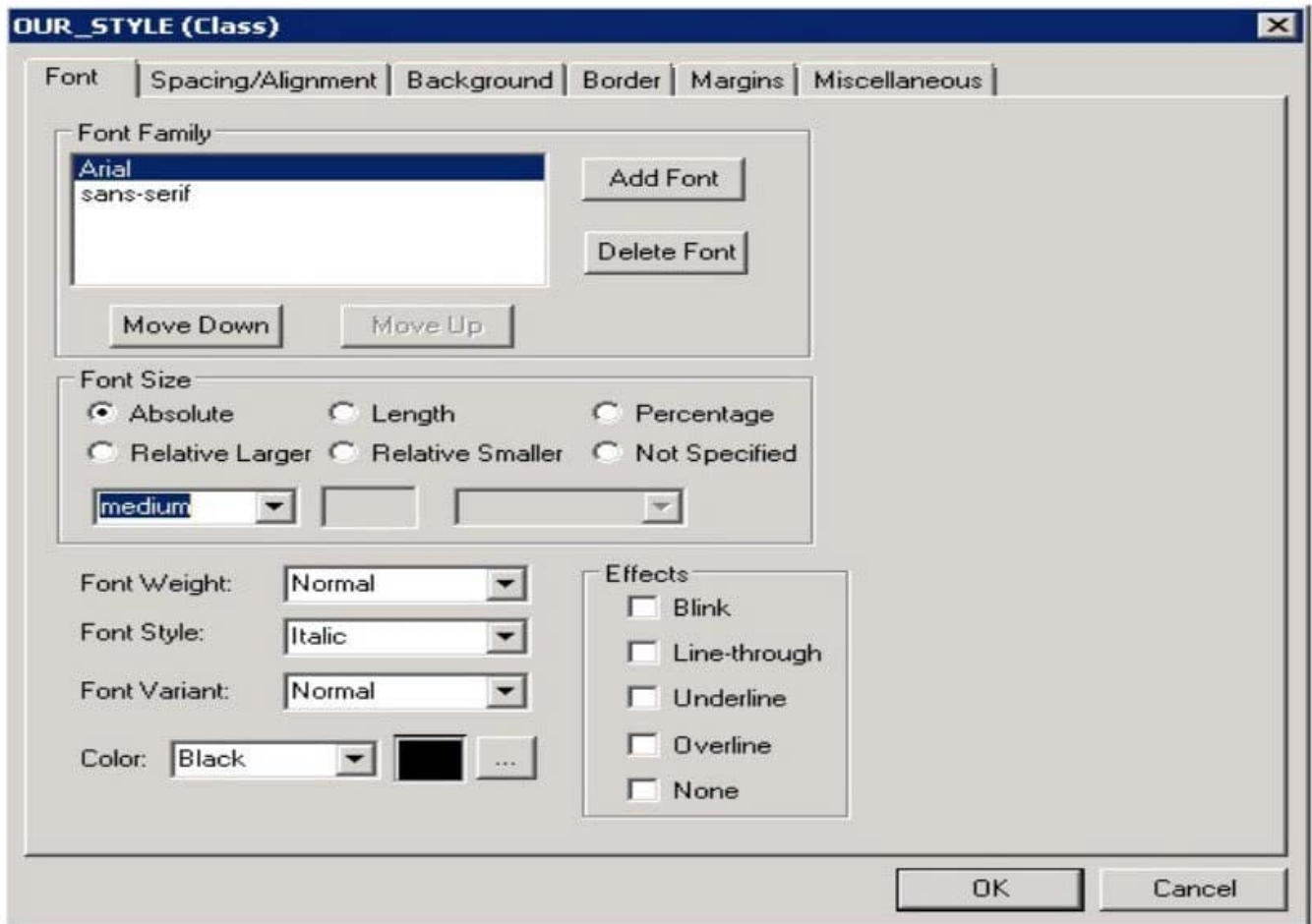
```
class RO_ROWSET extends Rowset
```

- A. RO_ROWSET is the superclass of the Rowset class
- B. Rowset is the superclass of the RO_ROWSET class
- C. RO_ROWSET is an instance of the Rowset class
- D. Rowset is a subclass of the RO_ROWSET class
- E. RO_ROWSET is an application class in the Rowset application package

Correct Answer: D

QUESTION 4

A colleague needs to update a custom cascading style sheet (CSS) style for your team's fluid application. She has the style definition shown in this exhibit open in Application Designer, but isn't sure if she has opened the correct style definition and asks for your advice.



How do you know she does not have a fluid CSS style open?

- A. The fluid user interface does not use the Arial or the sans-serif fonts. The fluid user interface uses only the Lucida Grande and Helvetica Neue fonts
- B. In the fluid user interface, font color is not set on the style definition. The current branding theme is what determines the font color for the fluid user interface display
- C. The fluid user interface does not use absolute font sizes. Only relative font sizes apply to the dynamic nature of the fluid user interface
- D. The fluid user interface uses only free form style sheets, and this style sheet is a fixed from style sheet
- E. Fluid style sheets all have _FL appended to the style name

Correct Answer: D

Reference: <http://technoeureka.blogspot.com/2018/03/applying-css-styling-to-field-values-on.html>

QUESTION 5

Review the definition of the Calculate user-defined function.

```
1 Function Calculate(&rate As number in, &output As number out)
2     &output = &output * (1 + &rate);
3     &rate = 0; /* Reset the rate to zero */
4 End-Function;
```

Then, review the invocation of this Calculate function in a FieldChange program:

```
1 Local number &incr = 0.12;
2
3 Declare Function Calculate PeopleCode FUNCLIB_ED_SVCS.CALC FieldFormula;
4 Calculate(&incr, EMPLOYEE.SALARY);
```

Which two corrections are required to allow these PeopleCode programs to be saved as syntactically correct programs that produce valid results? (Choose two.)

- A. In the FieldChange program, move line 3 to become line 1
- B. In the function definition, delete the in and out modifiers on line 1
- C. Delete line 3 from the function definition. In the FieldChange program, add the following as line 5: andincr = 0;
- D. Replace line 4 in the FieldChange program with the following:

```
Local number &salary = EMPLOYEE.SALARY.Value;
Calculate(&incr, salary);
EMPLOYEE.SALARY.Value = &salary;
```

Correct Answer: BD

[Latest 1Z0-632 Dumps](#)

[1Z0-632 Exam Questions](#)

[1Z0-632 Braindumps](#)