

## 1Z0-591<sup>Q&As</sup>

Oracle Business Intelligence Foundation Suite 11g Essentials

### Pass Oracle 1Z0-591 Exam with 100% Guarantee

Free Download Real Questions & Answers **PDF** and **VCE** file from:

<https://www.leads4pass.com/1z0-591.html>

100% Passing Guarantee  
100% Money Back Assurance

Following Questions and Answers are all new published by Oracle  
Official Exam Center

-  **Instant Download** After Purchase
-  **100% Money Back** Guarantee
-  **365 Days** Free Update
-  **800,000+** Satisfied Customers



## QUESTION 1

Which option does not describe Aggregate tables?

- A. Aggregate tables increase query performance by pre-calculating frequently accessed measure aggregations.
- B. Aggregate tables relieve bottlenecks and pre-calculate and store the data for better query response.
- C. Aggregate tables typically have fewer rows than the non aggregate tables and, therefore, processing should be quicker.
- D. Aggregate tables are created and stored on the BI Server.

Correct Answer: D

---

## QUESTION 2

Where is Oracle Mapviewer installed?

- A. In the same domain as OBIEE on the web application server
- B. Never on the same domain as OBIEE on the web application server
- C. On the Database server
- D. On its own application server

Correct Answer: A

Explanation: With the advent of 11G, MapViewer is installed as part of Oracle BI Enterprise Edition and deployed in the same domain as Oracle BI EE on the Web application server. Before content designers can create map views, in the Manage map Data Administration page, the metadata must be configured:

\*

layers (theme) and map (zoom level)

\*

the mapping between Oracle BI EE data and spatial data

---

## QUESTION 3

The Consistency Checker checks\_\_\_\_\_.

- A. The validity of objects outside the metadata using the connection
- B. Mappings to the physical objects
- C. For objects deleted from the database

D. Syntax errors in derived logical columns

Correct Answer: B

Explanation: Consistency check is one of the process to check whether a repository is yielding proper results in Answer reports. It checks whether; \* All logical columns are mapped correctly to physical columns (B). \* All logical dimension tables have a logical key. \* There are at least two logical tables in the business model; one is a logical fact table, the other is logical dimension table with join condition. \* There are no circular logical join relationships. \* A presentation catalog exists for the business model.

---

#### QUESTION 4

The WebLogic Repository Schema generated via RCU can be deployed to which three DBMS?

- A. Oracle RDBMS
- B. Microsoft SQL Server
- C. IBM DB2
- D. Teradata

Correct Answer: ABC

Explanation: BIEE 11g Install High level Steps : Software Required

1.

Database (Oracle, IBM DB2 or MS-SQL)

2.

Repository Creation Utility (RCU)

3.

OBIEE 11g (11.1.1.3 is latest OBIEE as of 30 April 2011)

4.

WebLogic 10.3.3 (Optional ?Only required for 64 bit machine or IBM AIX)

5.

JDK 1.6 64 bit (Optional ?Only required for 64 bit machine)

---

#### QUESTION 5

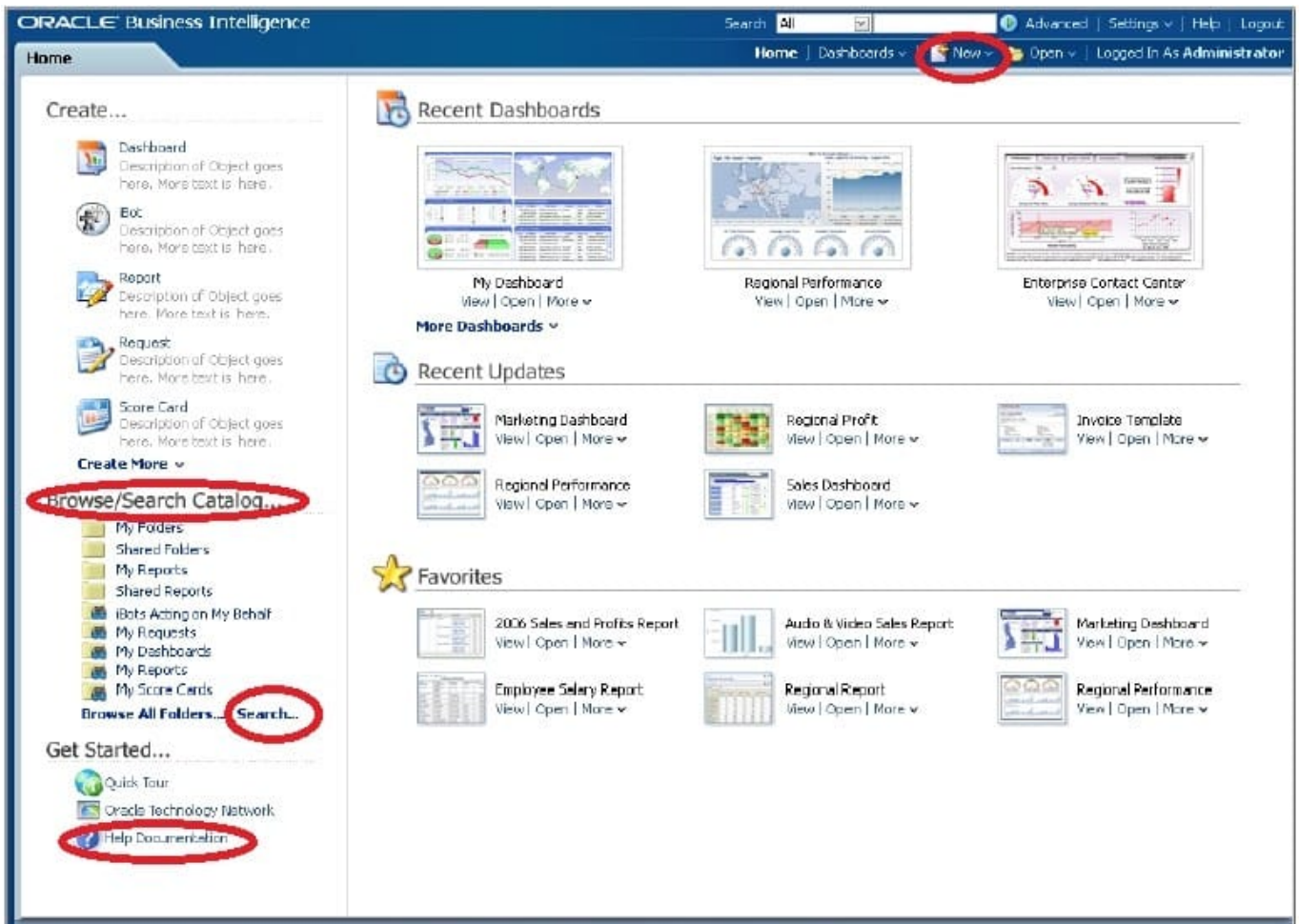
A user's BI Home page provides one-click access to which three options?

- A. Create new content
- B. Oracle BI online documentation

- C. Catalog search functionality
- D. Dashboard layout editor
- E. Business model metadata

Correct Answer: ABC

Explanation: See BI Home Page screenshot below: Note: The BI Home page contains the BI content catalog. Fusion Apps will use OBIEE web catalog to store all shipped reporting and analytics content. From the BI home page users can browse and view the entire BI content. The BI catalog folder structure will match the Fusion Apps main menu structure. Folder structure would be content driven not technology driven which would enable ease of navigation for fusion Apps users.



Following content will be available under the BI catalog structure: BI Publisher Reports (regardless of data source) OTBI reports and dashboards OBIA dashboards and scorecards Financial Reporting

Also, users can do some additional actions from the BI Home page like: Access personal and shared reports, View/ edit BI publisher report schedules, Launch BI tools for advanced actions and create new reports with report wizard.

New reports created can be saved in BI catalog and added as embedded content within Fusion applications screens or links added to reporting pane. This enables users to extend the prebuilt embedded analytics within Fusion Applications.