

## 1Z0-567<sup>Q&As</sup>

Primavera P6 Enterprise Project Portfolio Management 8 Essentials

### Pass Oracle 1Z0-567 Exam with 100% Guarantee

Free Download Real Questions & Answers **PDF** and **VCE** file from:

<https://www.leads4pass.com/1z0-567.html>

100% Passing Guarantee  
100% Money Back Assurance

Following Questions and Answers are all new published by Oracle  
Official Exam Center

-  **Instant Download** After Purchase
-  **100% Money Back** Guarantee
-  **365 Days** Free Update
-  **800,000+** Satisfied Customers



**QUESTION 1**

Select the true statement regarding role proficiency.

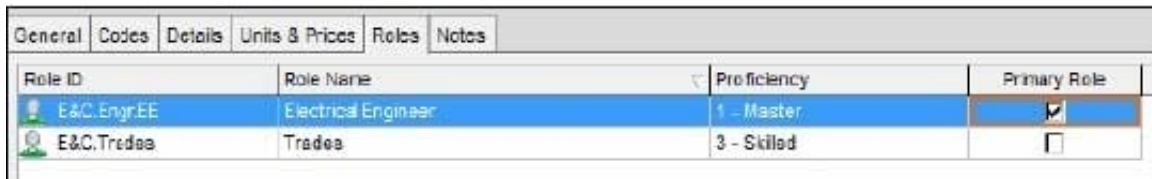
- A. The numbers and values can be customized.
- B. User-defined fields can be substituted for numbers and values.
- C. The numbers and values cannot be customized.
- D. Global resource codes can be substituted for numbers and values

Correct Answer: C

Explanation:

Resources: Roles

A number of roles can be set for the resource, with one role set to be the primary (default) role.



Role ID	Role Name	Proficiency	Primary Role
E&C.EngrEE	Electrical Engineer	1 - Master	<input checked="" type="checkbox"/>
E&C.Tradea	Tradea	3 - Skilled	<input type="checkbox"/>

On this tab you can also assign a resource's proficiency in a given role. This skill level ranges from 1 - Master to 5 - Inexperienced and can be used to select the

right person with the right level of skills for a given task.

Note:

Example:

The Search icon is new. This one lets you search and locate resources using a sophisticated filter. You can search on a wide range of criteria, including date

range, role, proficiency.

For example, in the following screenshot we are searching for all resources with Developer as the Primary Role with Proficiency of Master

Roles	Proficiency	Resource	Resource Codes
Developer	1 - Master		
	Any		
	Any		
	Any		

Note 2: A resource skill level is a resource's role proficiency.

**QUESTION 2**

All commands executed by toolbar icons can be accessed from three menus. Select the three menus.

- A. Action
- B. Copy
- C. Edit
- D. Paste
- E. View
- F. Remove
- G. Modify

Correct Answer: ACE

Explanation:

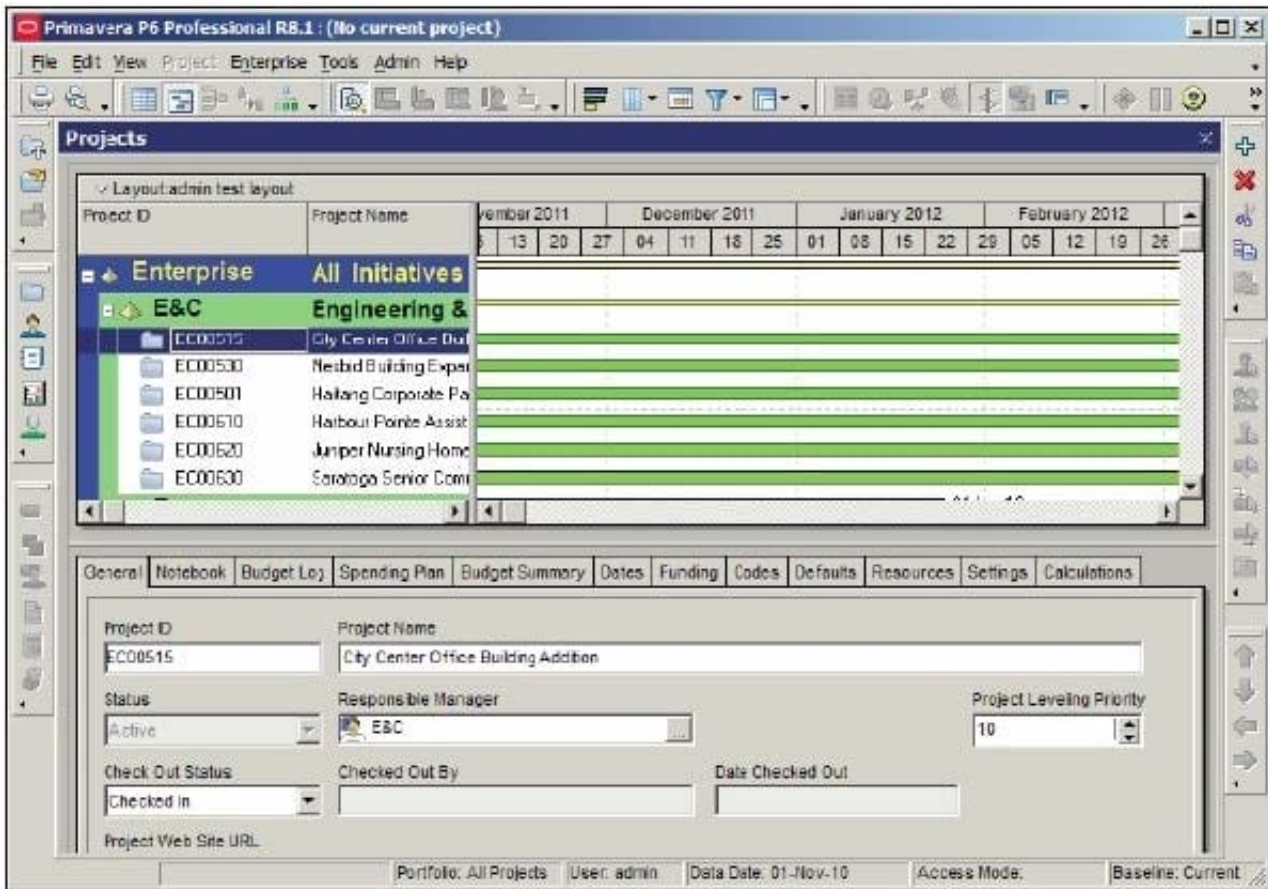
A: Note: To facilitate a streamlined, role-specific configuration of P6 Web Access, your administrator can assign you to a user interface view that corresponds to your role and work processes in your organization. The tabs, tab icons, and action menu items that you can access in each section of P6 Web Access, and the order in which they appear, depend on your user interface view settings

C: The Edit menu is a standard Windows menu that lets you do common actions such as cut, copy, and paste.

E: The View menu is quite extensive, and the items available vary as you view different modules.

Note:

When you log into P6 the first time, you should be presented with a screen similar to the following screenshot:



### QUESTION 3

A Physical % complete activity has an original duration of 10, and a remaining duration of 10. The actual start is assigned to the activity. Physical % is updated to equal 80%. What is the remaining duration for this activity?

- A. 80
- B. 10
- C. 2
- D. 8

Correct Answer: B

Explanation:

### QUESTION 4

The two global profiles that are hard-coded in the system and cannot be deleted or changed \_\_\_\_\_ and \_\_\_\_\_.

- A. Project Manager
- B. System Administrator
- C. IT Administrator
- D. Admin Super User
- E. Resource Manager
- F. No Global Privileges

Correct Answer: DF

Explanation:

In addition to any global profiles that you define, P6 provides two predefined global profiles: Admin Superuser and No Global Privileges.

References:

---

## QUESTION 5

What is the significance of setting "Summarize project based on high-level resource planning"?

- A. Summarized project data will reflect top-down plans.
- B. Summarized project data will reflect bottoms-up plans.
- C. Summarized project data will reflect actuals pushed from another application.
- D. Summarized project data will be monetized.

Correct Answer: A

Explanation:

Typically, use the High Level Resource Planning option for future projects that are currently planning only high-level resource allocation requirements, or for

projects that are underway, but for which you do not want to assign resources at a detailed activity-level.

Note: `Summarize Project Based on` determines whether the Summarizer calculates and displays rolled-up data based on resource assignments at the activity or

project level. Note 2: You can summarize project data to a specific WBS level when calculating and maintaining summary data.

Summarized Data	Project Settings
<input type="checkbox"/> Contains Summarized Data Only	Character for separating code fields for the WBS tree <input type="text" value="."/>
Last Summarized On <input type="text" value="Nov-12-04 15:29"/>	Fiscal year begins on the 1st day of <input type="text" value="January"/>
Summarize to WBS Level <input type="text" value="2"/>	Baseline for earned value calculations <input checked="" type="radio"/> Project baseline <input type="radio"/> User's primary baseline
Summarize project based on <input type="radio"/> High level resource planning <input checked="" type="radio"/> Detail activity resource assignments	<b>Define Critical Activities</b> <input checked="" type="radio"/> Total Float less than or equal to <input type="text" value="0.00d"/> <input type="radio"/> Longest Path

[Latest 1Z0-567 Dumps](#)

[1Z0-567 PDF Dumps](#)

[1Z0-567 VCE Dumps](#)