



# 1Z0-478<sup>Q&As</sup>

Oracle SOA Suite

## Pass Oracle 1Z0-478 Exam with 100% Guarantee

Free Download Real Questions & Answers **PDF** and **VCE** file from:

<https://www.lead4pass.com/1Z0-478.html>

100% Passing Guarantee  
100% Money Back Assurance

Following Questions and Answers are all new published by Oracle  
Official Exam Center

-  **Instant Download** After Purchase
-  **100% Money Back** Guarantee
-  **365 Days** Free Update
-  **800,000+** Satisfied Customers





### QUESTION 1

Identify the statement that describes an ESB.

- A. An ESB provides a mediation layer between services and consumers.
- B. An ESB facilitates a point-to-point approach to application integration.
- C. An ESB is an execution engine providing Java EE capabilities.
- D. An ESB makes service provider addresses visible to service consumers.

Correct Answer: A

\*

An enterprise service bus (ESB) is a software architecture model used for designing and implementing the interaction and communication between mutually interacting software applications in service-oriented architecture (SOA). As a software architecture model for distributed computing it is a specialty variant of the more general client server software architecture model and promotes agility and flexibility with regards to communication and interaction between applications. Its primary use is in enterprise application integration (EAI) of heterogeneous and complex landscapes.

\*

An enterprise service bus (ESB) is a software architecture for middleware that provides fundamental services for more complex architectures. For example, an ESB incorporates the features required to implement a service-oriented architecture (SOA). In a general sense, an ESB can be thought of as a mechanism that manages access to applications and services (especially legacy versions) to present a single, simple, and consistent interface to end-users via Web- or forms-based client-side front ends.

---

### QUESTION 2

Which two approaches are valid when using dynamic partner links in a BPEL process?

- A. A WSDL file, which contains multiple services that use the same portType, is available at design time, but the decision to determine which service is used can only be made at runtime.
- B. When the BPEL process is designed, the endpoint URL of the WSDL file is known but the services and port types are not known.
- C. When the BPEL process is designed, the services and port types of the WSDL file are known but the endpoint URI is not known.
- D. A WSDL file, which contains multiple services that use different portTypes, is available at design time, but the decision to determine which server us used can only be made at runtime.

Correct Answer: AC

A (not D): How To Create a Dynamic Partner Link at Design Time for Use at Runtime

To create a dynamic partner link at design time for use at runtime:



1. Create a WSDL file that contains multiple services that use the same portType. etc

C (not B): The BPEL specification mandates that only the partner endpoint reference (EPR) can be changed dynamically. In BPEL terms, only the partnerRole of a partner link element can have a new value assigned. The myRole value doesn't change after the BPEL has been deployed.

Note:

\*

Dynamic Partner Links and Dynamic Addressing During the design-time of an application, you may need to configure certain services whose endpoints (addresses) are not known beforehand, or it may be necessary to change an endpoint reference while the application is running. The Dynamic Partner link feature allows you to dynamically assign an endpoint reference to the partner link. This means that you can use one partner link for subsequent calls to different web-services (provided that the services use the same interface).

\*

For successful deployment of the process, a partner link should be completely defined. When you deploy the project, the WSDL file for the partner link should contain and define both the abstract and the concrete information for the partner link, including address and port, though later the concrete information can be changed independently from the WSDL file.

### QUESTION 3

Which statement best describes deploying your SOA application to a cluster?

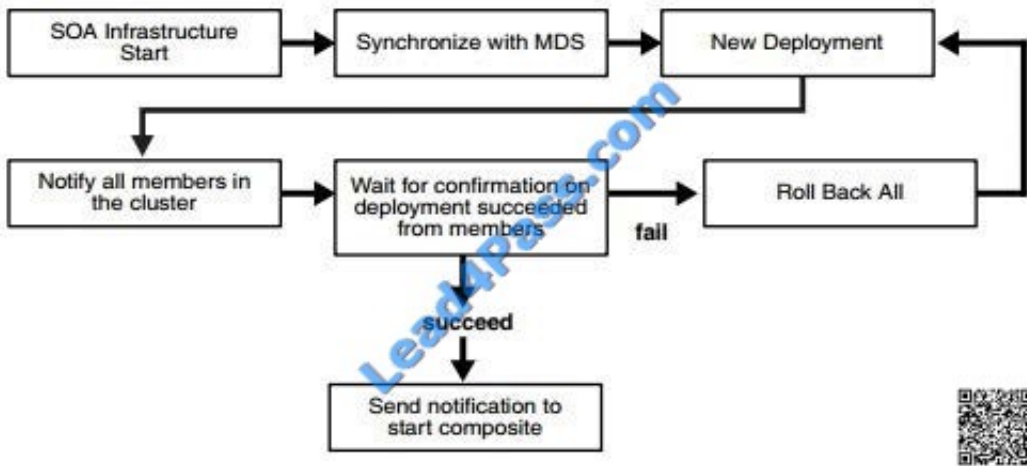
- A. Manually deploy the application to each managed server in the cluster.
- B. After deployment, restart each managed server in the cluster before the application is available for service.
- C. Use WebLogit Server Administration Console for deployment because you cannot deploy to a cluster from JDeveloper.
- D. Treat your cluster as a single deployment target and let the administration server automatically deploy the application to all managed servers in the cluster.

Correct Answer: D

Note:

\* Oracle SOA Service Infrastructure Cluster-Wide Deployment Composite deployments are stored centrally by the SOA Service Infrastructure in the MDS repository. Each time the SOA Service Infrastructure is started, it synchronizes itself with the MDS repository and SOA store to get the deployment and process state. The deployment coordinator infrastructure orchestrates the notifications for composites deployments and updates. When a new deployment or update takes place, deployment coordinator notifies all members in the cluster. When all members in the cluster confirm that the deployment has succeeded, the master sends a notification to start the composite. If a deployment fails on any one of the nodes, it is rolled back to the rest of the cluster

\* Figure: Cluster-Wide Deployment of Oracle SOA Composites



#### QUESTION 4

In your solution, a web service client needs to invoke a series of three web services in support of a single transaction. The third web service needs the identity of the original web service client.

Which statement describes how the identity is made available by Oracle Web Services Manager (OWSM)?

- A. The transaction manager accesses an internal table that maintains credentials used to invoke each individual web service in the chain.
- B. Each web service in the chain does its own authentication so the third web service handles its own identity checking.
- C. OWSM sets the user in the Java Authentication and Authorization (JAAS) Subject when the first web service successfully authenticates, and the Java Subject is used by subsequent web services to access the identity.
- D. OWSM stores a SAML token from the first web service invocation in a database table, and that table is accessed by subsequent web services in the chain to retrieve identity.

Correct Answer: C

#### Propagating Identities through a Chain of Web Services

A web service may invoke another web service which in turn may invoke yet another web service to complete a single transaction (this pattern is known as "chained web services"). Each of the services in the chain may be protected. Instead of checking which service is calling which other service, Oracle WSM allows you to check who the original user invoking the chain of Web services is. Oracle WSM policies can be used to propagate the original user's identity across the chained web services. Following successful authentication to the first web service in the chain, Oracle WSM sets the user as a Java Subject used throughout the transaction. When invoking another service, the Oracle WSM client policy picks up the user identity from the Java Subject, generates a SAML token based on the Subject's information, and inserts the SAML token in the WS-Security header of the request message to be sent to the service provider. This allows all the web services in a chain to track the identity of the actual user calling a web service endpoint instead of having the identity of the prior service in the chain calling the first web service to get that information.

Reference: Securing Web Services and Service-Oriented Architectures with Oracle Web Services Manager 11g, Oracle White Paper

#### QUESTION 5



In oracle Service Bus, loose coupling between service provider and service consumer is provided by the \_\_\_\_\_.

- A. database tables stored in MDS
- B. a proxy service and a business service
- C. a JMS-based queuing service
- D. a Mediator component

Correct Answer: B

[1Z0-478 PDF Dumps](#)

[1Z0-478 VCE Dumps](#)

[1Z0-478 Practice Test](#)



To Read the [Whole Q&As](#), please purchase the [Complete Version](#) from [Our website](#).

## Try our product !

100% Guaranteed Success  
100% Money Back Guarantee  
365 Days Free Update  
Instant Download After Purchase  
24x7 Customer Support  
Average 99.9% Success Rate  
More than 800,000 Satisfied Customers Worldwide  
Multi-Platform capabilities - [Windows](#), [Mac](#), [Android](#), [iPhone](#), [iPod](#), [iPad](#), [Kindle](#)

We provide exam PDF and VCE of Cisco, Microsoft, IBM, CompTIA, Oracle and other IT Certifications. You can view Vendor list of All Certification Exams offered:

<https://www.lead4pass.com/allproducts>

## Need Help

Please provide as much detail as possible so we can best assist you.  
To update a previously submitted ticket:



 <p><b>One Year Free Update</b> Free update is available within One Year after your purchase. After One Year, you will get 50% discounts for updating. And we are proud to boast a 24/7 efficient Customer Support system via Email.</p>	 <p><b>Money Back Guarantee</b> To ensure that you are spending on quality products, we provide 100% money back guarantee for 30 days from the date of purchase.</p>	 <p><b>Security &amp; Privacy</b> We respect customer privacy. We use McAfee's security service to provide you with utmost security for your personal information &amp; peace of mind.</p>
---	---	--

Any charges made through this site will appear as Global Simulators Limited.  
All trademarks are the property of their respective owners.  
Copyright © lead4pass, All Rights Reserved.