



1Z0-242^{Q&As}

PeopleSoft Application Developer II: Application Engine & Integration

Pass Oracle 1Z0-242 Exam with 100% Guarantee

Free Download Real Questions & Answers **PDF** and **VCE** file from:

<https://www.lead4pass.com/1Z0-242.html>

100% Passing Guarantee
100% Money Back Assurance

Following Questions and Answers are all new published by Oracle
Official Exam Center

-  **Instant Download** After Purchase
-  **100% Money Back** Guarantee
-  **365 Days** Free Update
-  **800,000+** Satisfied Customers





QUESTION 1

View the Exhibit.

This PeopleCode program disables the CHARGE_BACK field:

```
Local Row andRow;
```

```
andRow = GetRow();
```

```
andRow.PSU_TASK Effort.CHARGE_BACK.Enabled = False;
```

For this program to work as shown, what is the highest level at which it could be placed?



- A. PSU_TASK_TBL (Table)
- B. PSU_TASK_RSRC (Table)
- C. PSU_TASK_EFFORT (Table)
- D. CHARGE_BACK (Record Field)
- E. PSU_TASK_RESOURCES (Component)
- F. PSU_TASK_TBL (Table) - Search Record

Correct Answer: C

QUESTION 2



You have been asked to create the handler for an asynchronous service operation that is being sent outbound to several external nodes. When the service operation is sent, you need to be able to add criteria to filter the nodes. Which method will you implement in the handler PeopleCode to accomplish this?

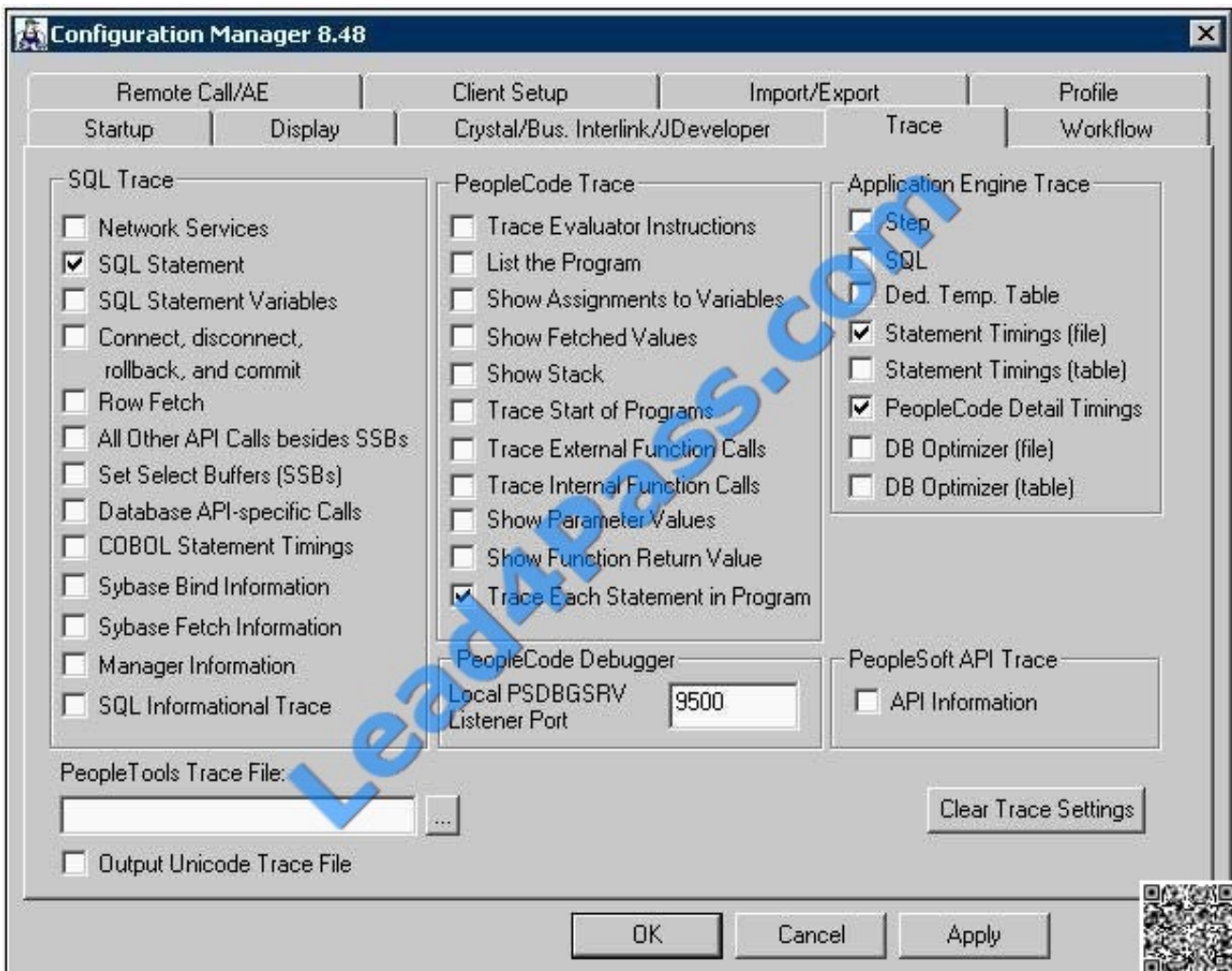
- A. OnNotify
- B. OnRouteSend
- C. OnAckReceive
- D. OnRequestSend
- E. OnRouteReceive

Correct Answer: B

QUESTION 3

View the Exhibit.

You run an Application Engine program through Process Scheduler with Trace configured as shown in the Exhibit. What will the trace show? (Choose all that apply.)





- A. SQL statements
- B. Statement Timings
- C. PeopleCode Detail Timings
- D. Trace Each Statement in Program
- E. Nothing. The program has to be run in two-tier mode.
- F. Nothing. A PeopleTools Trace File must be specified.

Correct Answer: E

QUESTION 4

View the Exhibit.

This run control page executes an Application Engine program that updates the Course table using the parameters entered by a user.

In addition to the run control page, which three elements must be in place? (Choose three.)

The screenshot shows a web interface for a run control page titled "Psu Run Inact". At the top left, it says "Run Control ID: OPC". To the right, there are links for "Report Manager" and "Process Monitor", and a yellow "Run" button. Below this, there is a section titled "Inactivate Courses" which contains two dropdown menus: "Application Release" with the value "8.90" and "PeopleTools Release" with the value "8.44". A QR code is visible in the bottom right corner of the page.

- A. A state record with fields to hold input parameters
- B. Component variables to pass the input parameters
- C. A data buffer object to retrieve the input parameters
- D. Application Engine SQL to retrieve the input parameters
- E. A PeopleCode record object to update the Course table
- F. A Process Instance table to store run control parameters
- G. A run control record with fields to store the input parameters

Correct Answer: ADG



QUESTION 5

The Application Engine program PSU_PROC_ORD uses values from PS_PSU_ORDER_DTL and PS_PSU_STOCK_TBL to update PS_PSU_STOCK_TBL. You used a Do Select action to select QTY_ON_HAND, QTY_ORDERED, and

ITEM_CD from PS_PSU_ORDER_DTL into the state record. You added a SQL action to update PS_PSU_STOCK_TBL using the values in the state record.

Which code would you use in the SQL action?

- A. UPDATE PS_PSU_STOCK_TBL SET QTY_ON_HAND = %1 - %2 WHERE ITEM_CD = %3 (QTY_ON_HAND, QTY_ORDERED, ITEM_CD)
- B. %UPDATE (QTY_ON_HAND) SELECT QTY_ON_HAND - QTY_ORDERED FROM PS_PSU_STOCK_TBL WHERE ITEM_CD = %Bind(ITEM_CD)
- C. UPDATE PS_PSU_STOCK_TBL SET QTY_ON_HAND = %Bind(QTY_ON_HAND) - %Bind(QTY_ORDERED) WHERE ITEM_CD = %Bind(ITEM_CD)
- D. UPDATE PS_PSU_STOCK_TBL SET QTY_ON_HAND = Bind(QTY_ON_HAND) - Bind(QTY_ORDERED) WHERE ITEM_CD = Bind(ITEM_CD)
- E. %UPDATE PS_PSU_STOCK_TBL SET QTY_ON_HAND = %QTY_ON_HAND - %QTY_ORDERED) WHERE ITEM_CD = %ITEM_CD

Correct Answer: C

[Latest 1Z0-242 Dumps](#)

[1Z0-242 PDF Dumps](#)

[1Z0-242 VCE Dumps](#)



To Read the [Whole Q&As](#), please purchase the [Complete Version](#) from [Our website](#).

Try our product !

100% Guaranteed Success
100% Money Back Guarantee
365 Days Free Update
Instant Download After Purchase
24x7 Customer Support
Average 99.9% Success Rate
More than 800,000 Satisfied Customers Worldwide
Multi-Platform capabilities - [Windows](#), [Mac](#), [Android](#), [iPhone](#), [iPod](#), [iPad](#), [Kindle](#)

We provide exam PDF and VCE of Cisco, Microsoft, IBM, CompTIA, Oracle and other IT Certifications. You can view Vendor list of All Certification Exams offered:

<https://www.lead4pass.com/allproducts>

Need Help

Please provide as much detail as possible so we can best assist you.
To update a previously submitted ticket:



 <p>One Year Free Update Free update is available within One Year after your purchase. After One Year, you will get 50% discounts for updating. And we are proud to boast a 24/7 efficient Customer Support system via Email.</p>	 <p>Money Back Guarantee To ensure that you are spending on quality products, we provide 100% money back guarantee for 30 days from the date of purchase.</p>	 <p>Security & Privacy We respect customer privacy. We use McAfee's security service to provide you with utmost security for your personal information & peace of mind.</p>
---	---	--

Any charges made through this site will appear as Global Simulators Limited.
All trademarks are the property of their respective owners.
Copyright © lead4pass, All Rights Reserved.