



# 1Z0-141<sup>Q&As</sup>

Oracle9i forma Developer:build internet applications

## Pass Oracle 1Z0-141 Exam with 100% Guarantee

Free Download Real Questions & Answers **PDF** and **VCE** file from:

<https://www.lead4pass.com/1Z0-141.html>

100% Passing Guarantee  
100% Money Back Assurance

Following Questions and Answers are all new published by Oracle  
Official Exam Center

-  **Instant Download** After Purchase
-  **100% Money Back** Guarantee
-  **365 Days** Free Update
-  **800,000+** Satisfied Customers





### QUESTION 1

You are developing a form that uses alerts to display database messages rather than associated FRM messages when the SQL statements issued by the form cause database errors to occur. You use a generic alert called DB\_Alert to display the messages.

You begin to code an On-Error trigger to trap the FRM-40505 error that occurs when the SQL statement references an invalid column name. The associated database message is "ORA-00904:

Invalid column name", and this is what you want to be displayed in the alert.

You create a form-level On-Error trigger with the following code:

```
DECLARE  
  
n NUMBER;  
  
BEGIN  
  
IF ERROR_CODE = 40505 THEN  
  
SET_ALERT_PROPERTY('\DB_Alert\ ',ALERT_MESSAGE_TEXT,  
DBMS_ERROR_CODE);  
  
n := SHOW_ALERT('\DB_Alert\ ');  
  
END IF;  
  
END;
```

You run the form to test it. What will the run-time behavior be when the FRM-40505 error is encountered?

- A. The alert called DB\_Alert appears with the message "ORA-00904: Invalid column name".
- B. The alert called DB\_Alert appears, but not with the correct message.
- C. The alert does not appear, and the FRM-40505 message appears on the message line.
- D. The alert does not appear, and the message "ORA-00904: Invalid column name" appears on the message line.
- E. The alert does not appear, and the message "FRM-41039: Invalid Alert ID 0" appears on the message line.

Correct Answer: B

---

### QUESTION 2

View the Exhibit.

You have created a menu for the Summit Office Supply application that you attach to its main form.

---



The menu, whose Menu Editor is shown in the exhibit, contains several submenus:

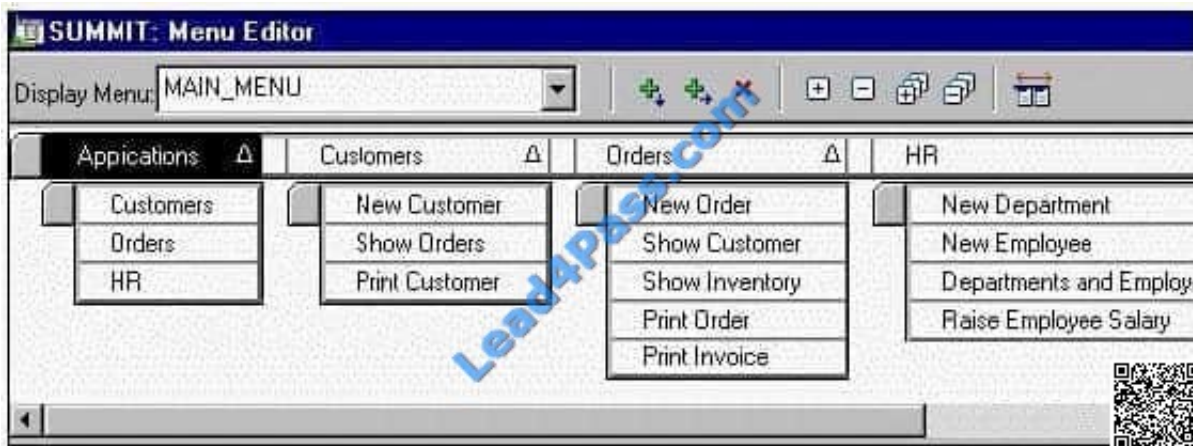
Applications, displaying a choice of forms to invoke

Customers, displaying menu items for the Customers form Orders, displaying menu items for the Orders form

HR, displaying menu items for the HR form

The Main Menu property for the menu is set to Applications.

When the user chooses from the Applications submenu to invoke another form, which built-in can you use to display the appropriate menu items for that form?



- A. FIND\_MENU
- B. REPLACE\_MENU
- C. FIND\_MENU\_ITEM
- D. SET\_FORM\_PROPERTY
- E. SET\_MENU\_ITEM\_PROPERTY

Correct Answer: B

### QUESTION 3

View the Exhibit.

The Credit\_Rating item in the Customers block of an Order Entry form must be restricted to three possible values: Good, Poor, or Null (the latter value indicates that the credit rating has not been determined). Order entry clerks must be able to update this item to any of these three values.

You want to change the item to a check box labeled "Credit Risk" that should be selected if the customer has poor credit. The check box should not be selected if the customer's credit rating is good or undetermined.

You change the item type to Check Box and set other properties as shown in the exhibit, then run your form and insert three records: two with good credit and the check box clear, and one with poor credit and the check box selected. You



commit the data and query the records, with the following result set:

CUST\_ID LAST\_NAME FIRST\_NAME CREDIT\_RATING -----  
1001 Gamer Pam 1002 Wallace Sheila 1003 Maslen Glenn Poor

The first two records show an undetermined credit rating, although your intention was to set the value to Good for those customers. What change must you make in the properties of the Credit\_Rating item to enable values of Good, Poor, and Null to be entered?

Label	Credit Risk
Access Key	
Implementation Class	
Value when Checked	Bad
Value when Unchecked	Good
Check Box Mapping of Other Values	Unchecked
Popup Menu	<Null>
<b>Navigation</b>	
Keyboard Navigable	Yes
Mouse Navigate	Yes
Previous Navigation Item	<Null>
Next Navigation Item	<Null>
<b>Data</b>	
Data Type	Char
Data Length Semantics	BYTE
Maximum Length	4
Initial Value	

- A. Change the Initial Value property to Good.
- B. Change the Check Box Mapping of Other Values property to Not Allowed.
- C. Change the Initial Value property to Good and the Value When Unchecked property to Null.
- D. Change the Initial Value property to Good and the Check Box Mapping of Other Values property to Null.
- E. Change the Initial Value property to Good and the Check Box Mapping of Other Values property to Checked.
- F. Change the item type. It is not appropriate to use a check box to enable entry and update of more than two values in an item.

Correct Answer: F

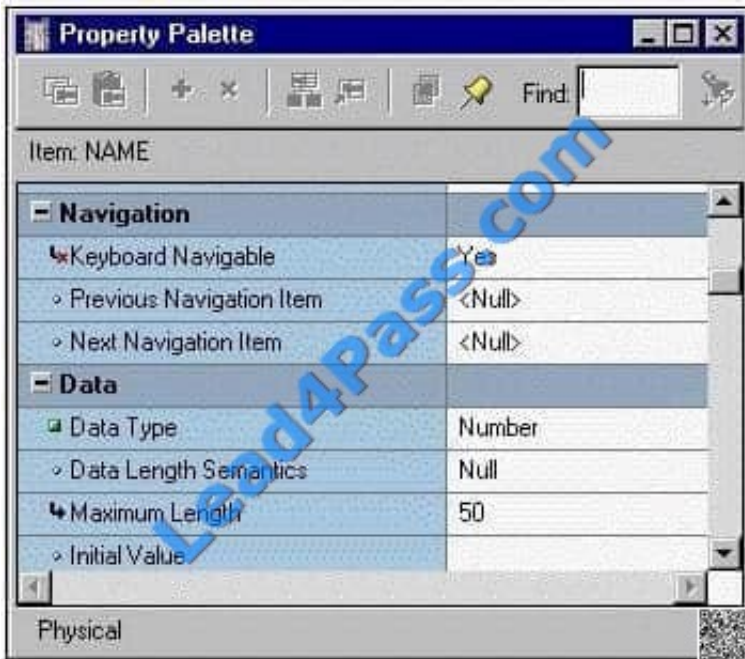
**QUESTION 4**

View the Exhibit.

The Name text item is subclassed from a property class.



Which two statements are true about the Keyboard Navigable property of the Name text item whose Property Palette is shown in the exhibit? (Choose two.)



- A. It is a variant property.
- B. It is a default property.
- C. It is a changed property.
- D. It is an inherited property.
- E. It was inherited from the property class. If the value of Keyboard Navigable changes in the property class, it will change in the Name item also.
- F. It was inherited from the property class and has been changed from the value in the property class.
- G. It was not inherited from the property class and has been modified from the default Keyboard Navigable value for a text item.
- H. It was not inherited from the property class and is the default Keyboard Navigable value for a text item.

Correct Answer: AF

### QUESTION 5

The Orders form is a master-detail form in which ORDERS is a single-record master block and ORDER\_ITEMS is a multirecord detail block.

During testing of the Orders form, users have complained about the behavior of Enter-Query mode.

In the form they are testing, they are unable to navigate out of the current block while they are in Enter-Query mode.



However, they would like to be able to carry out the following procedure:

1.  
Press [Enter Query] while in the master block.
2.  
Enter some search criteria.
3.  
Navigate to the detail block.
4.  
Enter more search criteria (while the form is still in Enter-Query mode).
5.  
Press [Execute Query] to have the criteria applied to both blocks at once. How can you provide the requested functionality?
  - A. The requested functionality is the default behavior. You simply need to remove or rewrite the triggers you wrote that "broke" the form.
  - B. Use a Key-Entqry trigger on the master block to redirect the focus to the detail block after the search criteria have been entered in the master block.
  - C. You cannot perform the requested operation with a master-detail form. The restriction on navigating out of the current block during Enter-Query mode cannot be circumvented.
  - D. Use a Key-Exeqry trigger on both the master and detail blocks to call a centralized procedure and have the procedure handle the navigation.
  - E. Use a Key-Nxtblk trigger on the ORDERS block to cause navigation to the ORDER\_ITEMS block. This will work because Key triggers can fire in Enter-Query mode and can call restricted built-ins such as GO\_BLOCK().
  - F. Use a combination of Key-Entqry and Key-Exeqry triggers at form level to call generically written procedures to test where the current focus is and set global variables that a form-level Key-Nxtblk trigger can use to redirect the focus.

Correct Answer: C

[Latest 1Z0-141 Dumps](#)

[1Z0-141 Study Guide](#)

[1Z0-141 Exam Questions](#)



To Read the [Whole Q&As](#), please purchase the [Complete Version](#) from [Our website](#).

## Try our product !

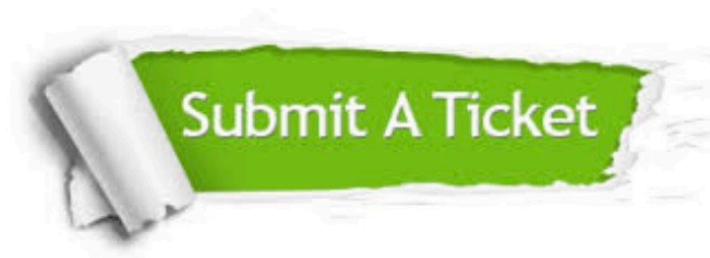
100% Guaranteed Success  
100% Money Back Guarantee  
365 Days Free Update  
Instant Download After Purchase  
24x7 Customer Support  
Average 99.9% Success Rate  
More than 800,000 Satisfied Customers Worldwide  
Multi-Platform capabilities - [Windows](#), [Mac](#), [Android](#), [iPhone](#), [iPod](#), [iPad](#), [Kindle](#)

We provide exam PDF and VCE of Cisco, Microsoft, IBM, CompTIA, Oracle and other IT Certifications. You can view Vendor list of All Certification Exams offered:

<https://www.lead4pass.com/allproducts>

## Need Help

Please provide as much detail as possible so we can best assist you.  
To update a previously submitted ticket:



 <p><b>One Year Free Update</b> Free update is available within One Year after your purchase. After One Year, you will get 50% discounts for updating. And we are proud to boast a 24/7 efficient Customer Support system via Email.</p>	 <p><b>Money Back Guarantee</b> To ensure that you are spending on quality products, we provide 100% money back guarantee for 30 days from the date of purchase.</p>	 <p><b>Security &amp; Privacy</b> We respect customer privacy. We use McAfee's security service to provide you with utmost security for your personal information &amp; peace of mind.</p>
---	---	--

Any charges made through this site will appear as Global Simulators Limited.  
All trademarks are the property of their respective owners.  
Copyright © lead4pass, All Rights Reserved.