



1Z0-047^{Q&As}

Oracle Database SQL Expert

Pass Oracle 1Z0-047 Exam with 100% Guarantee

Free Download Real Questions & Answers **PDF** and **VCE** file from:

<https://www.lead4pass.com/1Z0-047.html>

100% Passing Guarantee
100% Money Back Assurance

Following Questions and Answers are all new published by Oracle
Official Exam Center

-  **Instant Download** After Purchase
-  **100% Money Back** Guarantee
-  **365 Days** Free Update
-  **800,000+** Satisfied Customers





QUESTION 1

View the Exhibit and examine the data in the PRODUCT_INFORMATION table. There are some products listed in the PRODUCT_INFORMATION table that have no value in the LIST_PRICE column. You issued the following SQL statement to find out the PRODUCT_NAME for these products:

```
SELECT product_name, list_price  
FROM product_information WHERE list_price = NULL;
```

PRODUCT_NAME	LIST_PRICE
Inkjet C8/HQ	349
LaserPro 1200/8/BW	699
LaserPro 600/6/BW	498
HD 10GB /I	453
HD 10GB /R	489
HD 10GB /S	436
HD 10GB @5400 /SE	399
HD 12GB /I	543
HD 12GB /N	567
HD 12GB /R	612
HD 12GB /S	633
HD 12GB @7200 /SE	775
HD 18.2GB @10000 /E	800
HD 18.2GB@10000 /I	850
HD 8GB /SE	
HD 8GB /SI	
HD 9.1GB @10000	

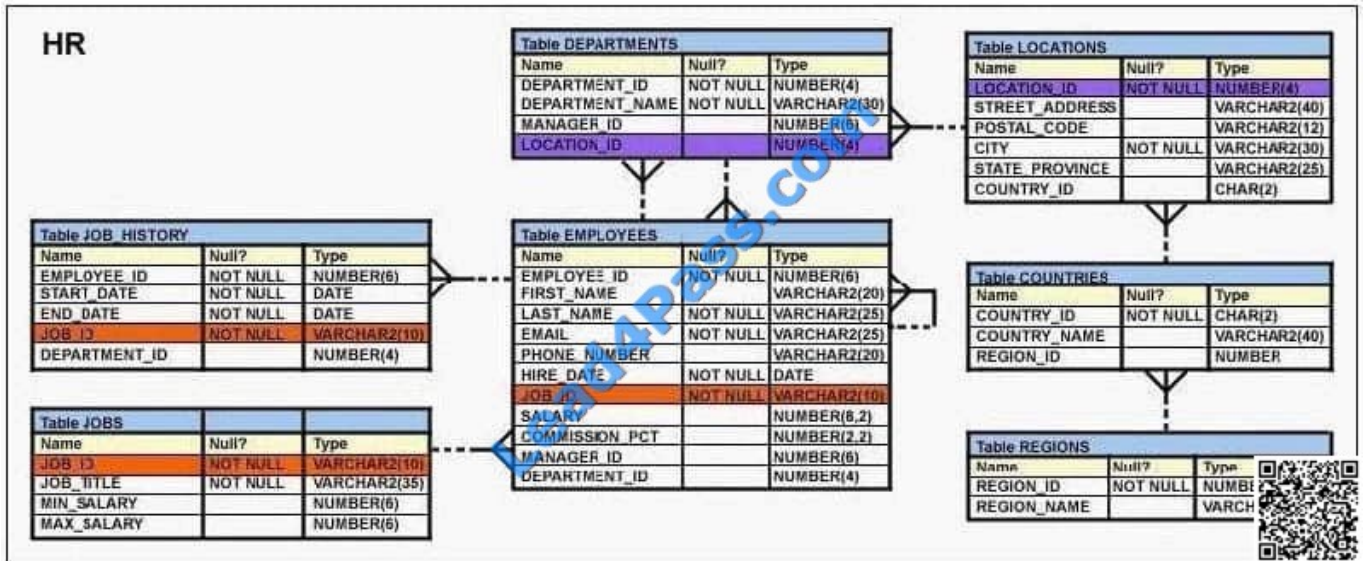
The query returns no rows. What changes would you make in the statement to get the desired result?

- A. Change the WHERE clause to WHERE list_price = 0
- B. Change the WHERE clause to WHERE list_price = '\\\\'.
- C. Change the WHERE clause to WHERE list_price IS NULL.
- D. In the WHERE clause, enclose NULL within single quotation marks.
- E. In the WHERE clause, enclose NULL within double quotation marks.

Correct Answer: C

QUESTION 2

View the Exhibit and examine the description of the DEPARTMENTS and EMPLOYEES tables.



To retrieve data for all the employees for their EMPLOYEE_ID, FIRST_NAME, and DEPARTMENT NAME, the following SQL statement was written:

```
SELECT employee_id, first_name, department_name
```

```
FROM employees NATURAL JOIN departments;
```

The desired output is not obtained after executing the above SQL statement. What could be the reason for this?

- A. The NATURAL JOIN clause is missing the USING clause.
- B. The table prefix is missing for the column names in the SELECT clause.
- C. The DEPARTMENTS table is not used before the EMPLOYEES table in the FROM clause.
- D. The EMPLOYEES and DEPARTMENTS tables have more than one column with the same column name and data type.

Correct Answer: D

QUESTION 3

Which statement is true regarding the SESSION_PRIVS dictionary view?

- A. It contains the current object privileges available in the user session.
- B. It contains the current system privileges available in the user session.
- C. It contains the object privileges granted to other users by the current user session.
- D. It contains the system privileges granted to other users by the current user session.

Correct Answer: B



QUESTION 4

Which three statements are true regarding group functions? (Choose three.)

- A. They can be used on columns or expressions.
- B. They can be passed as an argument to another group function.
- C. They can be used only with a SQL statement that has the GROUP BY clause.
- D. They can be used on only one column in the SELECT clause of a SQL statement.
- E. They can be used along with the single-row function in the SELECT clause of a SQL statement.

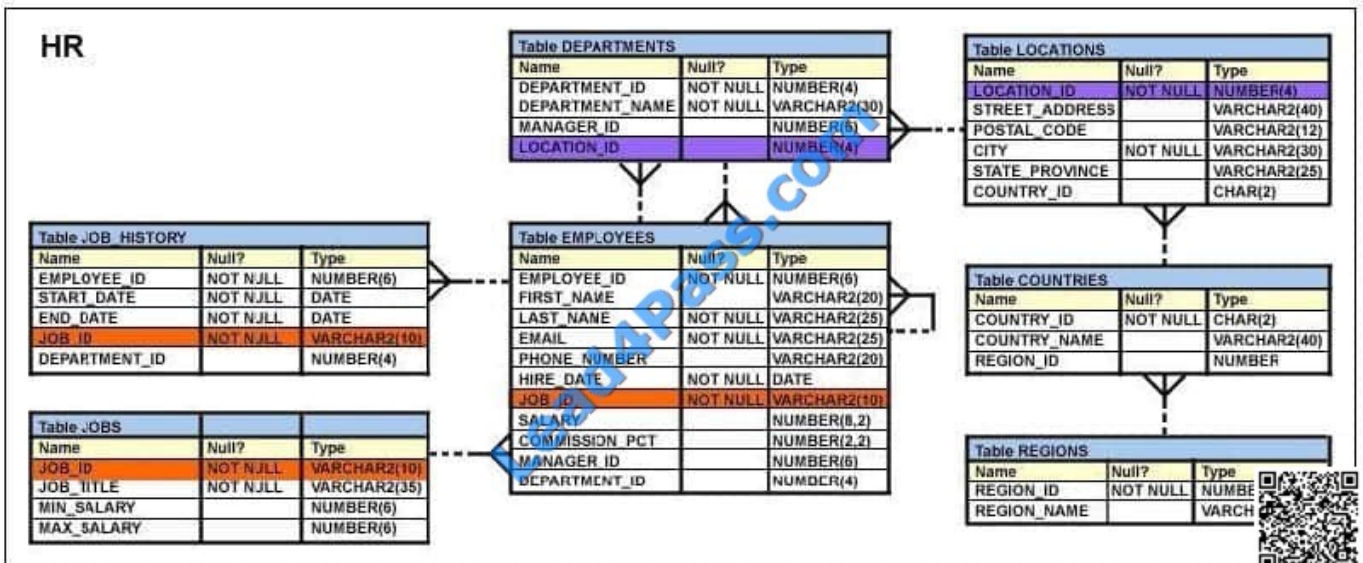
Correct Answer: ABE

QUESTION 5

View the Exhibit and examine the structure of the EMPLOYEES table.

Evaluate the following SQL statement: `SELECT employee_id, last_name, job_id, manager_id FROM employees START WITH employee_id = 101 CONNECT BY PRIOR employee_id=manager_id;`

Which statement is true regarding the output for this command?



- A. It would return a hierarchical output starting with the employee whose EMPLOYEE_ID is 101, followed by his or her peers.
- B. It would return a hierarchical output starting with the employee whose EMPLOYEE_ID is 101, followed by the employee to whom he or she reports.
- C. It would return a hierarchical output starting with the employee whose EMPLOYEE_ID is 101, followed by employees below him or her in the hierarchy.
- D. It would return a hierarchical output starting with the employee whose EMPLOYEE_ID is 101, followed by employees up to one level below him or her in the hierarchy.



Correct Answer: C

[1Z0-047 VCE Dumps](#)

[1Z0-047 Study Guide](#)

[1Z0-047 Exam Questions](#)



To Read the [Whole Q&As](#), please purchase the [Complete Version](#) from [Our website](#).

Try our product !

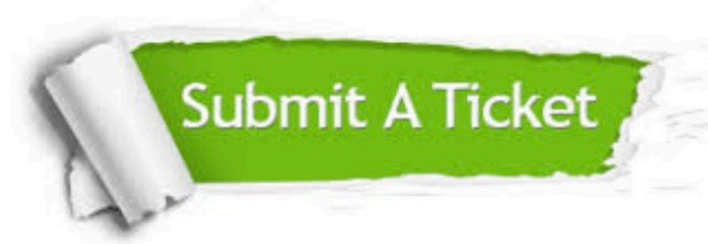
100% Guaranteed Success
100% Money Back Guarantee
365 Days Free Update
Instant Download After Purchase
24x7 Customer Support
Average 99.9% Success Rate
More than 800,000 Satisfied Customers Worldwide
Multi-Platform capabilities - [Windows](#), [Mac](#), [Android](#), [iPhone](#), [iPod](#), [iPad](#), [Kindle](#)

We provide exam PDF and VCE of Cisco, Microsoft, IBM, CompTIA, Oracle and other IT Certifications. You can view Vendor list of All Certification Exams offered:

<https://www.lead4pass.com/allproducts>

Need Help

Please provide as much detail as possible so we can best assist you.
To update a previously submitted ticket:



 <p>One Year Free Update Free update is available within One Year after your purchase. After One Year, you will get 50% discounts for updating. And we are proud to boast a 24/7 efficient Customer Support system via Email.</p>	 <p>Money Back Guarantee To ensure that you are spending on quality products, we provide 100% money back guarantee for 30 days from the date of purchase.</p>	 <p>Security & Privacy We respect customer privacy. We use McAfee's security service to provide you with utmost security for your personal information & peace of mind.</p>
---	---	--

Any charges made through this site will appear as Global Simulators Limited.
All trademarks are the property of their respective owners.
Copyright © lead4pass, All Rights Reserved.