

1Y0-A21^{Q&As}

Basic Administration for Citrix NetScaler 9.2

Pass Citrix 1Y0-A21 Exam with 100% Guarantee

Free Download Real Questions & Answers **PDF** and **VCE** file from:

<https://www.leads4pass.com/1y0-a21.html>

100% Passing Guarantee
100% Money Back Assurance

Following Questions and Answers are all new published by Citrix
Official Exam Center

-  **Instant Download** After Purchase
-  **100% Money Back** Guarantee
-  **365 Days** Free Update
-  **800,000+** Satisfied Customers



QUESTION 1

Scenario: An administrator needs to configure SSL offloading on a NetScaler system. The administrator has already enabled SSL on the NetScaler, added the necessary service and added an SSL-based virtual server.

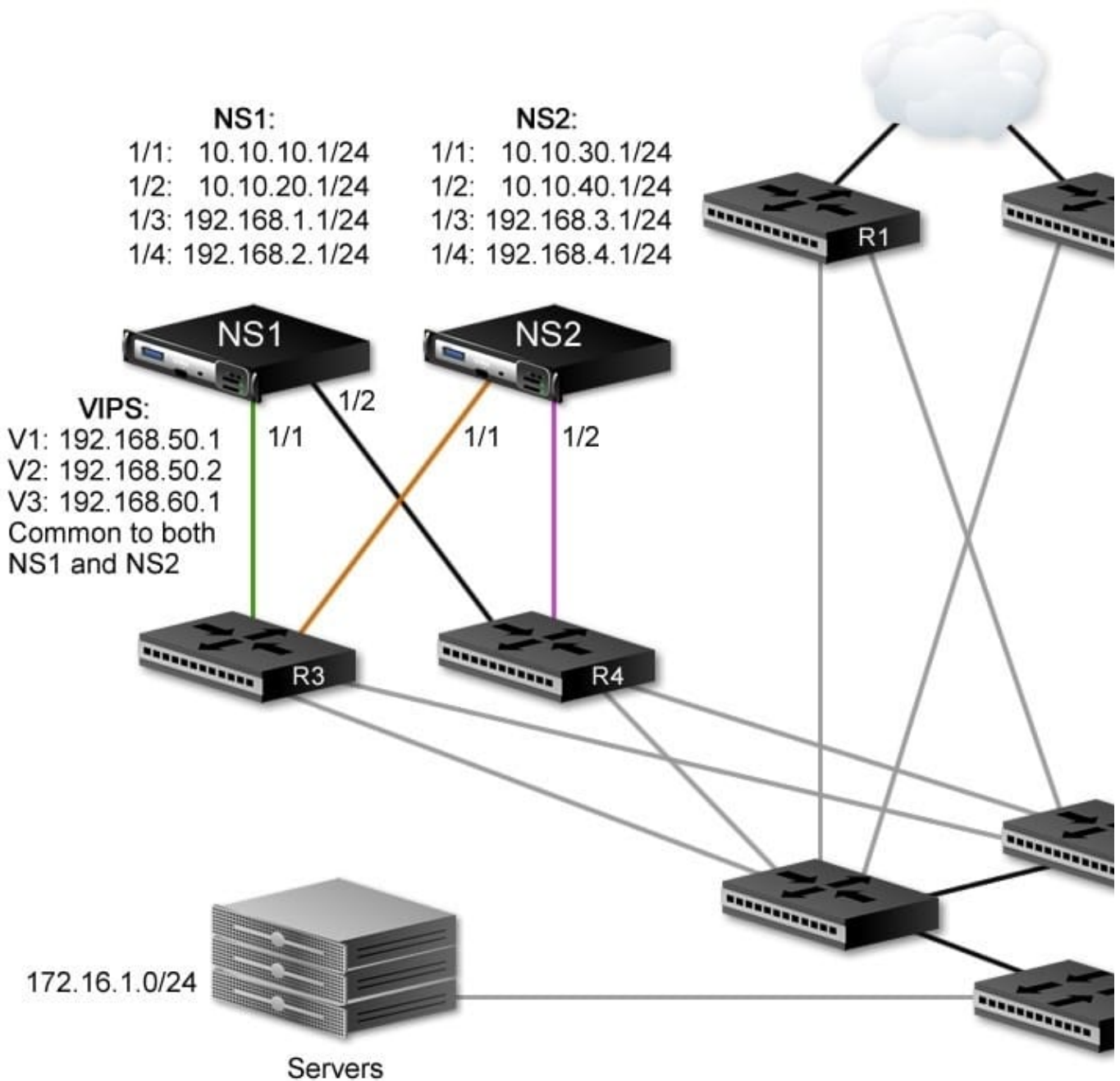
Which three additional steps must the administrator take to complete the SSL offloading configuration? (Choose three.)

- A. Create load balancing virtual servers.
- B. Bind the created service to the virtual server.
- C. Add a wildcard certificate to the virtual server.
- D. Add an SSL certificate key pair to the NetScaler.
- E. Bind the SSL certificate key pair to the virtual server.
- F. Obtain an SSL certificate from an authorized certificate authority (CA).

Correct Answer: BDE

QUESTION 2

Scenario: An administrator is working within a network environment as depicted in the attached exhibit. The NetScaler systems in this HA pair need to exchange heartbeat packets over L3 through routers R3 and R4.



How can the administrator achieve this HA functionality?

- A. Enable the dynamic routing feature.
- B. Configure Route Health Injection (RHI).
- C. Bind a route monitor to each NetScaler device.
- D. Enable Independent Network Configuration (INC).

Correct Answer: D

QUESTION 3

Scenario: An administrator needs to configure a NetScaler device so that a set of back-end servers in a LAN can initiate connections to the Internet. ACLs are configured in this environment. What must the administrator configure to meet the needs of this scenario?

- A. INAT on the servers in the LAN
- B. RNAT for the destination IP addresses
- C. NAT on the router to the NetScaler device
- D. RNAT for the subnet that includes the LAN IP addresses
- E. RNAT on the virtual servers bound to the servers in the LAN

Correct Answer: D

QUESTION 4

Scenario: An ISP provides SaaS to enterprise customers as part of a cloud offering. A NetScaler is configured to support multi-tenant deployments. Traffic isolation for each enterprise (tenant) is achieved using VLAN segmentation for each enterprise customer. As an example, incoming client requests from enterprise customers are assigned to separate VLANs. Which feature can an administrator configure to specify that the VIP for customer1 will only listen to requests coming from VLAN1 and the VIP from customer2 will only listen for requests from VLAN2?

- A. Static Routes
- B. Policy-based routing
- C. MAC-based Forwarding
- D. Network-aware policies

Correct Answer: D

QUESTION 5

An administrator needs to configure a NetScaler-owned IP address for server-side connections in an environment in which USNIP mode is globally enabled on the NetScaler system.

Which step must the administrator take to meet the needs of this scenario?

- A. Add an IP of type SNIP.
- B. Ensure USIP mode is enabled globally.
- C. Configure VIPs instead of SNIPs for the server-side connections.
- D. Enable USNIP mode on the virtual server entities bound to the back-end servers.

Correct Answer: A

[1Y0-A21 PDF Dumps](#)

[1Y0-A21 VCE Dumps](#)

[1Y0-A21 Exam Questions](#)