

1Y0-301^{Q&As}

Deploying Citrix XenDesktop 7.6 Solutions

Pass home 1Y0-301 Exam with 100% Guarantee

Free Download Real Questions & Answers **PDF** and **VCE** file from:

<https://www.leads4pass.com/1y0-301.html>

100% Passing Guarantee
100% Money Back Assurance

Following Questions and Answers are all new published by home
Official Exam Center

-  **Instant Download** After Purchase
-  **100% Money Back** Guarantee
-  **365 Days** Free Update
-  **800,000+** Satisfied Customers



QUESTION 1

Which two Windows components can be selected using the Provisioning Services Device Optimization Tool? (Choose two.)

- A. Search
- B. Firewall
- C. SuperFetch
- D. Screen Saver
- E. TCP/IP Offload

Correct Answer: AC Section: (none)

QUESTION 2

Where could a Citrix Engineer check which virtual channels are active in a user session?

- A. Citrix Studio
- B. Citrix Director
- C. Resource Monitor
- D. NetScaler Insight Center

Correct Answer: B Section: (none)

QUESTION 3

Which statement accurately describes the purpose of StoreFront beacons?

- A. Determine which servers are up in a highly available StoreFront server group.
- B. Sent to XenApp and XenDesktop Delivery Controllers to determine which resources a user has access to.
- C. Allow StoreFront to automatically update receiver clients when a beacon from an old receiver client is received.
- D. Determine whether a user is connected to a local network or connecting from the Internet so that the appropriate connection details can be passed to Citrix Receiver.

Correct Answer: D Section: (none)

QUESTION 4

Which two settings could a Citrix Engineer configure on NetScaler Gateway to ensure that connections are utilizing ICA

Proxy? (Choose two.)

- A. SSL Bridge
- B. Basic Mode
- C. SSL Offload
- D. Content Switching
- E. SmartAccess Mode

Correct Answer: BE Section: (none)

QUESTION 5

CORRECT TEXT

Scenario: A Citrix Engineer must provide students in the Cardiology program at CCH with Windows 8 virtual desktops. These students will use hosted applications through Receiver. Personalization of the Windows 8 virtual desktops is NOT required.

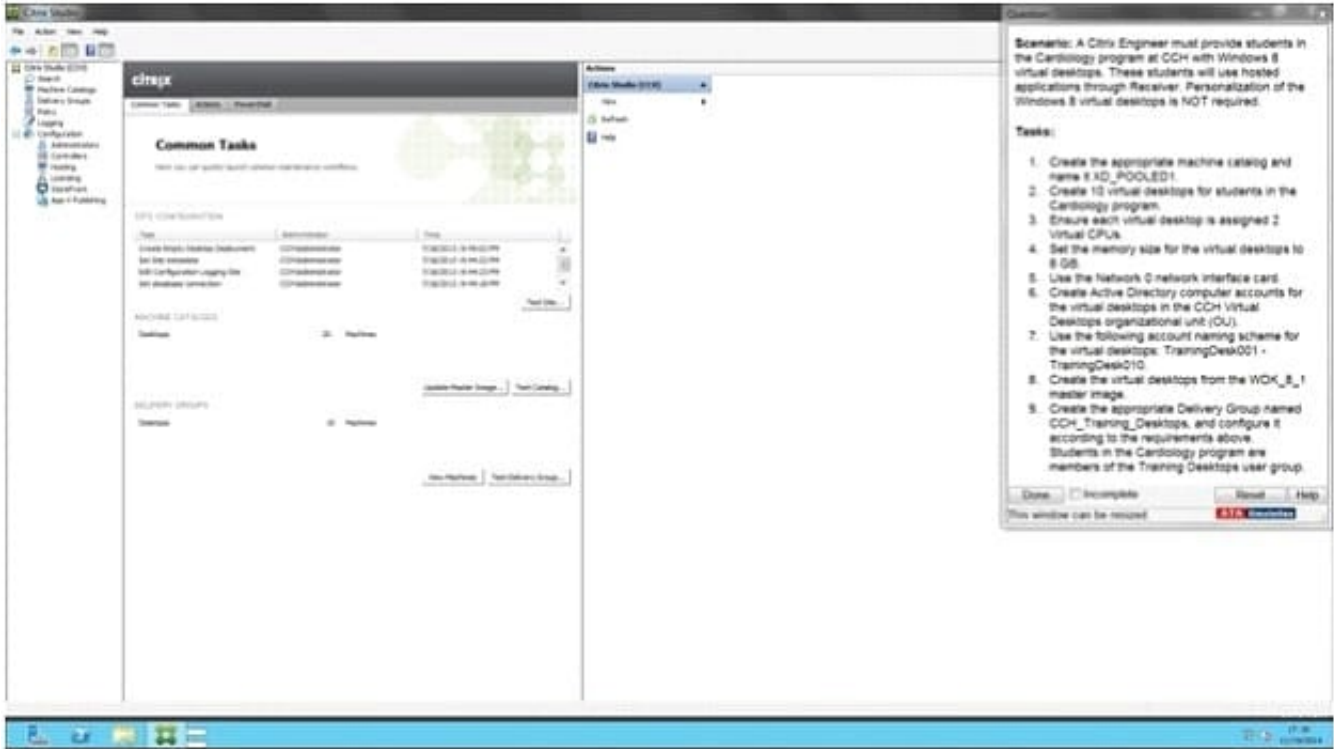
Tasks:

1.
Create the appropriate machine catalog and name it XD_POOLED 1.
2.
Create 10 virtual desktops for students in the Cardiology program.
3.
Ensure each virtual desktop is assigned 2 Virtual CPUs.
4.
Set the memory size for the virtual desktops to 8 GB.
5.
Use the Network 0 network interface card.
6.
Create Active Directory computer accounts for the virtual desktops in the CCH Virtual Desktops organizational unit (OU).
7.
Use the following account naming scheme for the virtual desktops: TrainingDesk001 ?TrainingDesk010.
- 8.

Create the virtual desktops from the WDK_8_1 master image.

9.

Create the appropriate Delivery Group named CCH_Training_Desktops, and configure it according to the requirements above. Students in the Cardiology program are members of the Training Desktops user group.

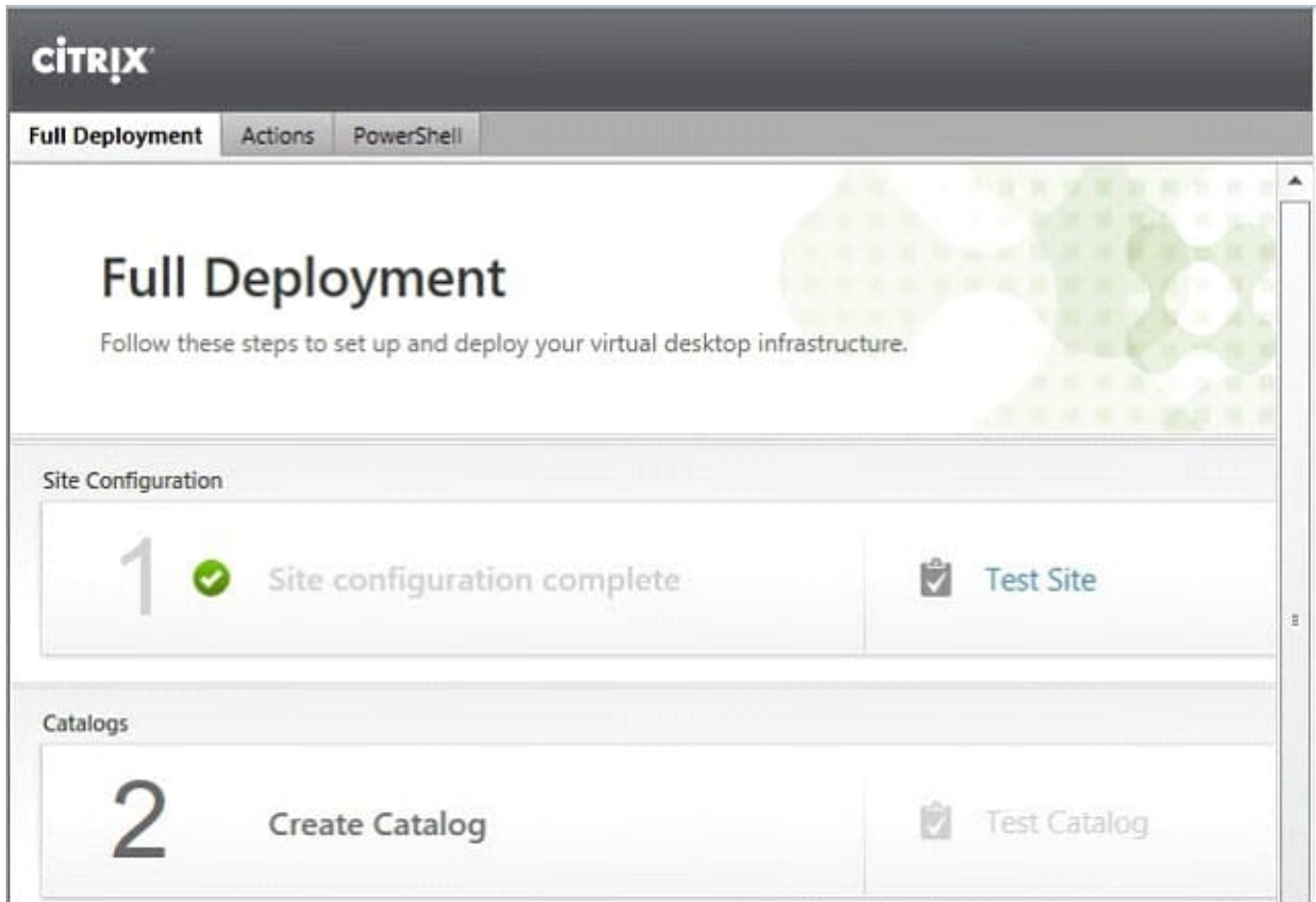


A.

Correct Answer: A Section: (none)

Answer: Find the solution with all steps below. XenDesktop 7 Machine Catalog

1. In Desktop Studio we want to create a VM catalog,



2. Choose the OS type

Operating System and Hardware

We want to help you create the correct type of Machine Catalog by asking a few questions to provide a recommendation

[Learn more](#)

Select an operating system and machine type for this Machine Catalog.

- Windows Desktop OS**
The Desktop OS Machine Catalog provides VDI desktops ideal for a variety of different users.
- Windows Server OS**
The Server OS Machine Catalog provides hosted shared desktops for a large-scale deployment of standardized machines.
- Remote PC Access**
The Remote PC Access Machine Catalog provides users with remote access to their physical office desktops, allowing them to work at any time.

3. We will be using VMs and Citrix Machine Creation Services, so the defaults are fine. 4. Use the default

Machine Management

As part of creating a Machine Catalog, the way you plan to provision machines influences the recommended Machine Catalog type.

[Learn more](#)

This infrastructure will be built using:

- Virtual machines
- Physical hardware

Desktop images are managed using:

- Machine Creation Services (MCS)
- Provisioning Services (PVS)
- Another service or technology
I will manage my desktop images with something other than Citrix technology. I have existing Master Images already prepared.

Desktop Experience

Consider the tasks your users perform and then decide which desktop experience would be best.

Which desktop experience do you want users to have?

- I want users to connect to a new (random) desktop each time they log on.
- I want users to connect to the same (static) desktop each time they log on.

Do you want to save any changes that the user makes to the desktop?

- Yes, save changes on a separate Personal vDisk.
- Yes, create a dedicated virtual machine and save changes on the local disk.
- No, discard all changes and clear virtual desktops when the user logs off.
If configured, folder redirection will not be affected.

5.

Choose the master image WDK_8_1 master image

6.

A great feature of XenDesktop is the ability to customize the catalog hardware at provisioning time, so you can offer different tiers of VMs from the exact same master image. No need to build up templates with the same OS and software stack, just to customize the vCPUs and memory specs.

7.

OU ?

C:\Users\Chaudhry\Desktop\1.jpg

8.

On the summary screen you need to give the catalog a name and a description.

9.

After you kick off the provisioning process you get a nice status. MCS first makes a copy of your master VM, then does its magic to create copies

Master Image

Select a Host and corresponding Virtual Machine or snapshot from the list to create a Master Image.

Select a Resource:

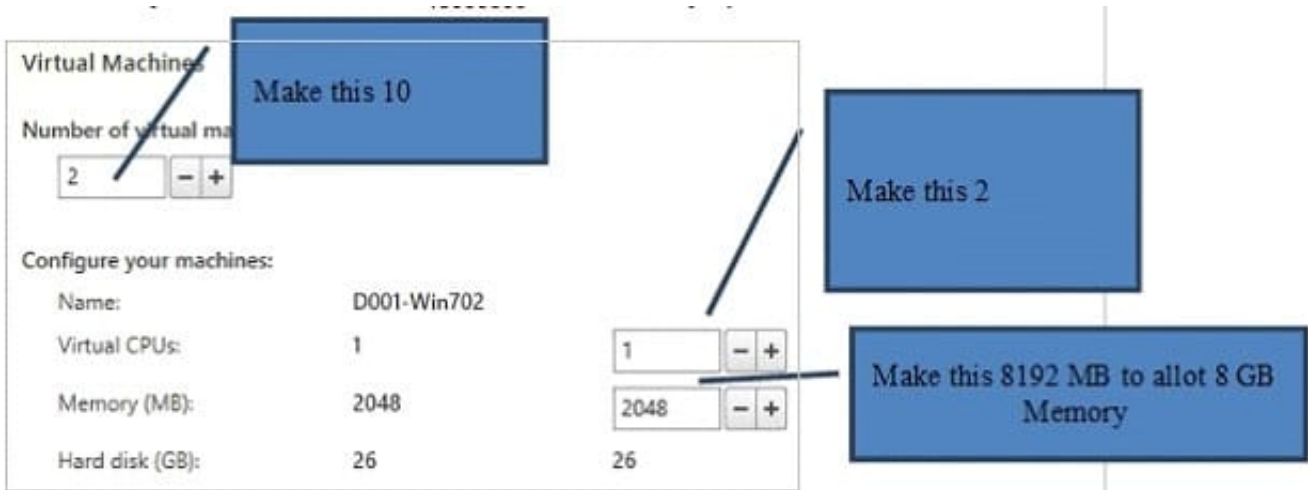
VDI

Select a snapshot (or a Virtual Machine):



The Master Image is built using Windows XP or Windows Vista

You should also select this option if the snapshot or Master Image is running Windows 7 with VDA 5.6



CCH Virtual Desktops

Machine Names –

TrainingDesk001 - TrainingDesk010

Active Directory Computer Accounts

Each machine in a Machine Catalog needs a corresponding Active Directory computer account.

[Learn more](#)

Select an Active Directory account option:

- Create new Active Directory accounts
- Use existing Active Directory accounts

Active Directory location for computer accounts:

Domain:

Computers
Member Servers
VDI
Managed Service Accounts

Selected location:

Account naming scheme:

VDI-NS-W7-01

Summary

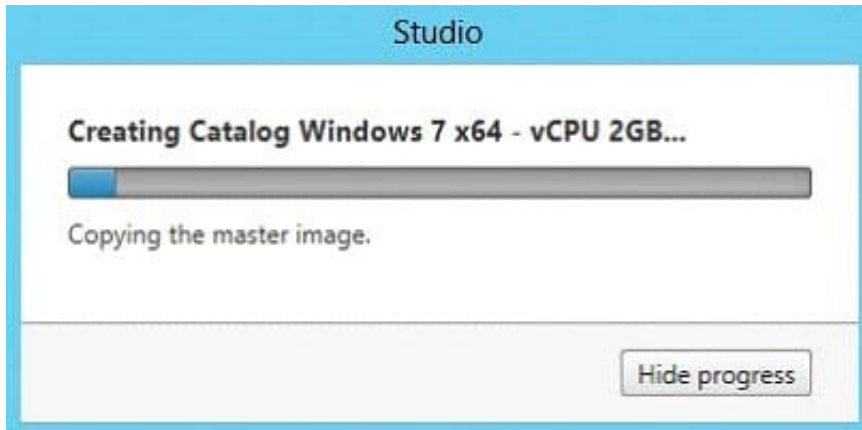
Machine type:	Windows Desktop OS
Machine management:	Virtual
Provisioning method:	Machine creation services (MCS)
Desktop experience:	Users connect to a new desktop each time they log on
Resources:	VDI
Master Image name:	D001-W7 A steps
Number of VMs to create:	2
Virtual CPUs:	1

Change this per the Simulation to XD_POOLED1

Machine Catalog name:

Machine Catalog description for administrators: (Optional)

Note: To complete the deployment, assign this machine catalog to a Delivery Group by selecting Delivery Groups and then Create or Edit a Delivery Group.



10. When the provisioning is completed you now have one machine catalog entry



11. If you double click on the machine catalog it will bring up a search window with the individual VMs listed. You can now power them on and wait for them to show a "registered" status. If you click on an individual VM it will pull up even more details. If a user had an active session to the VM then you get a plethora more data.

The screenshot shows the Citrix Desktop Studio interface. At the top, there's a search bar with the text '<Unsaved>' and a dropdown menu for 'Saved searches'. Below this, a search results bar indicates 'Search results for "(Machine Catalog is "Windows 7 x64 - vCPU 2GB")"'. A table lists search results under three tabs: 'Desktop OS Machines (2)', 'Server OS Machines (0)', and 'Sessions (0)'. The table has columns for Name, Machine Catalog, Delivery Group, User, Maintenance, Persist User, Power State, and Registration. Two machines are listed: VDI-NS-W7-01.contoso.net and VDI-NS-W7-02.contoso.net, both with 'On' power state and 'Registered' status. Below the table, the 'Details' pane is open for 'VDI-NS-W7-01.contoso.net', showing 'Machine' and 'Session' information.

Name	Machine Catalog	Delivery Gro...	User	Maintenanc...	Persist User...	Power State	Registration...
VDI-NS-W7-01.contoso.net	Windows 7 x6...	-	-	Off	Discard	On	Registered
VDI-NS-W7-02.contoso.net	Windows 7 x6...	-	-	Off	Discard	On	Registered

Machine		Session	
Machine:	VDI-NS-W7-01.contoso.net	Current User:	-
Power State:	On	Protocol:	-
Registration:	Registered	Session type:	Desktop
Delivery Group:	-	Time in State:	-
Machine Catalog:	Windows 7 x64 - vCPU 2GB	Client Name:	-
Connection:	vSphere51	Client Address:	-
IP Address:	-	Launched Via IP:	-
Agent Version:	7.0.0.3018	Connected Via:	-
Profile Definition:			
StoreFronts:			

As you can see, creating a machine catalog from a master template is quick and easy. Within Desktop Studio you can view a tremendous amount of detail about the catalog and individual VMs.

[Latest 1Y0-301 Dumps](#)

[1Y0-301 VCE Dumps](#)

[1Y0-301 Practice Test](#)