

1Y0-201^{Q&As}

Managing Citrix XenDesktop 7.6 Solutions exam

Pass Citrix 1Y0-201 Exam with 100% Guarantee

Free Download Real Questions & Answers **PDF** and **VCE** file from:

<https://www.leads4pass.com/1y0-201.html>

100% Passing Guarantee
100% Money Back Assurance

Following Questions and Answers are all new published by Citrix
Official Exam Center

-  **Instant Download** After Purchase
-  **100% Money Back** Guarantee
-  **365 Days** Free Update
-  **800,000+** Satisfied Customers



QUESTION 1

Which session configuration on a NetScaler Gateway must a Citrix Administrator set to provide a secure connection to the servers running XenDesktop?

- A. ICA Proxy On
- B. Clientless Access OFF
- C. Default Authorization action
- D. Single Sign-On to web applications

Correct Answer: A

QUESTION 2**SIMULATION**

Scenario: A Citrix Administrator must use the Provisioning Services Console to add three additional server OS machines to CCH\\s environment. The administrator must add the machines to an existing machine catalog named Server 2012

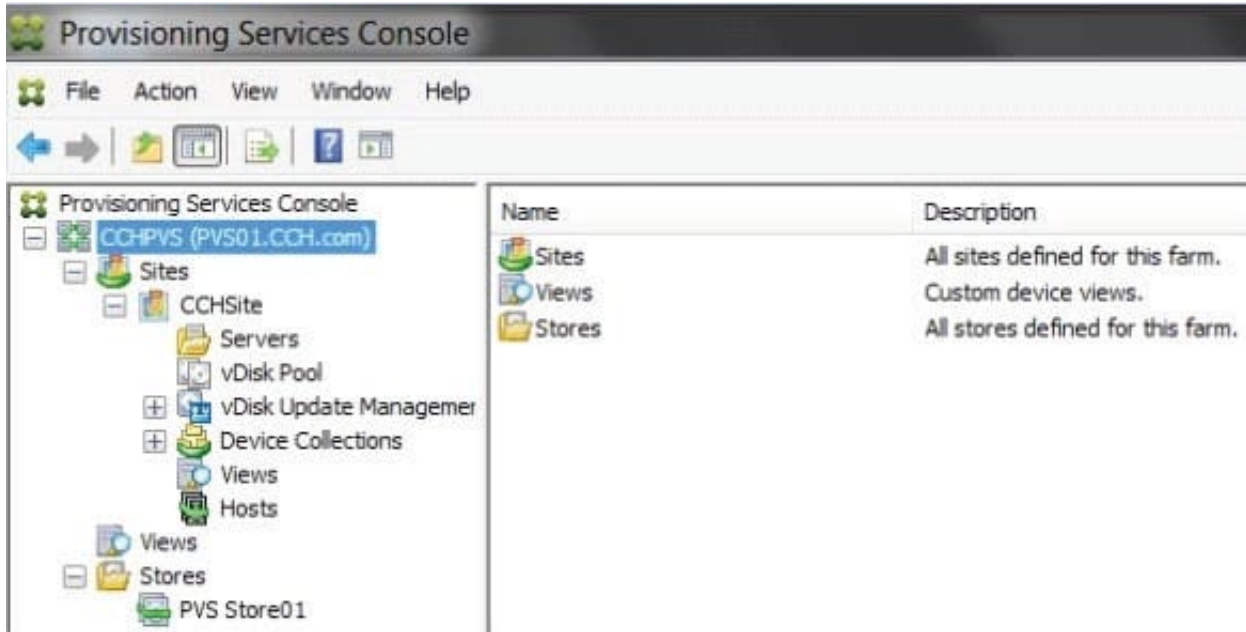
and the machines should be assigned the ServerOS2012 vDisk. The administrator must name the machines AppServer04, AppServer05 and AppServer06, respectively, and the machines should be added to the Server OS Machines OU, with

plans to add 20 more server OS machines in the future. Provisioning Services is configured to use Network0 asa streaming network interface card.

There is currently one Delivery Controller in the environment named Controller-1. This Delivery Controller is a member of the CCH.com domain.

The username for the hypervisor is root, and the password is Password 1. Tasks:

1. Create three target devices named AppServer04, AppServer05 and AppServer06, respectively.



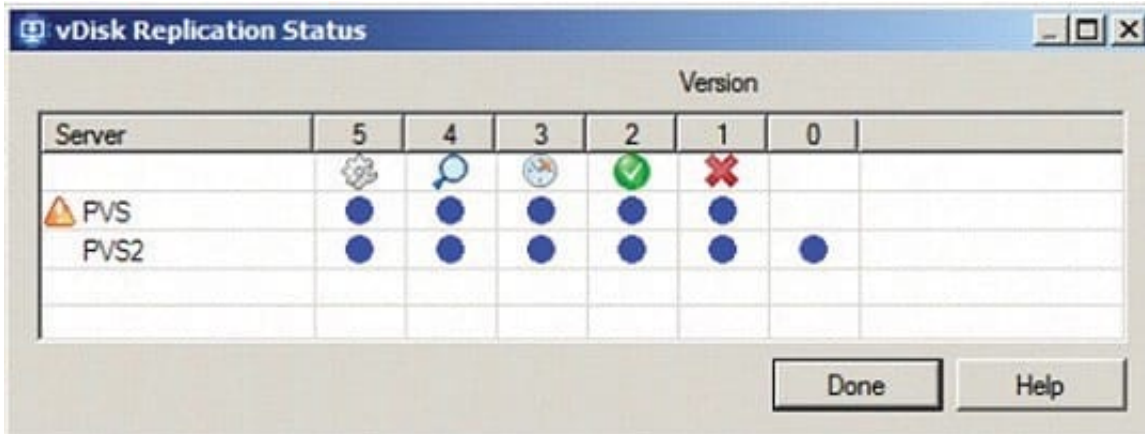
2. Ensure the target devices are configured according to the requirements outlined in the scenario.

Correct Answer:

- 1) Right click on "CCHSite" and click on XenDesktop Setup Wizard.
- 2) From the "Welcome to XenDesktop" dialog window click on Next.
- 3) From the "XenDesktop Controller" dialog window type in Controller-1 in the "XenDesktop Controller address:" field then click on Next.
- 4) From the "XenDesktop Host Resources" dialog windows click on Next.
- 5) From the "XenDesktop Host Resources Credentials" popup window type in the password of Password1 for the username "Root" then click on OK.
- 6) From the "Template" dialog window select the Server 2012 template then click on Next.
- 7) From the "vDisk" dialog window select ServerOS2012 vdisk then click no Next.
- 8) From the "Catalog" dialog window select Create a new catalog, type in a "Catalog name:" of Server 2012 then click on Next.
- 9) From the "Operating System" select Windows Server Operating System then click on Next.
- 10) From the "Virtual machines" dialog windows increase the number of "Virtual machines to create:" 3 then click on Next.
- 11) From the "Active Directory" dialog window verify "Create new accounts" is selected then click on Next.
- 12) From the "Active Directory accounts and location" dialog window Server OS Machines OU, in the "Account naming scheme" field type in AppServer##, select 0-9 from the drop down to the right, then click on Next.
- 13) From the "Summary" dialog window click on Finish.
- 14) When the devices are finished creating click on Done.

QUESTION 3

Scenario: A Citrix Administrator needs to replicate a vDisk between two production Provisioning Services servers named PVS and PVS2. The Replication Status dialog box shows an orange warning signal with a message. Click on the Exhibit button to view the dialog box.



What could be the cause of this issue?

- A. The SOAP service is NOT running on the PVS server.
- B. The server time is NOT configured correctly on the PVS and PVS2 servers.
- C. The Provisioning Services server does NOT have access to one of the vDisk locations.
- D. The network card configurations on the PVS server do NOT match the configurations on the PVS2 server.

Correct Answer: C

QUESTION 4

What will continue to function while a XenDesktop site database is offline?

- A. Citrix Studio
- B. Citrix Director
- C. AnonymousConnections
- D. Existing user connections to Desktop OS machines

Correct Answer: D

QUESTION 5

Scenario: A high number of Desktop OS machines are displaying as '\\Unregistered\\' in Citrix Studio. However, Desktop OS machines that are registered are functioning as expected. What is the likely cause of this issue?

- A. The Delivery Controller is unable to register with DNS.
- B. The Delivery Controller is NOT configured to trust XML requests.
- C. A Digital certificate is NOT installed on the Desktop OS machines.
- D. The affected Desktop OS machines are unable to register with DNS.

Correct Answer: D

[Latest 1Y0-201 Dumps](#)

[1Y0-201 PDF Dumps](#)

[1Y0-201 Practice Test](#)