



100-101^{Q&As}

CCNA Interconnecting Cisco Networking Devices 1 (ICND1)

Pass Cisco 100-101 Exam with 100% Guarantee

Free Download Real Questions & Answers **PDF** and **VCE** file from:

<https://www.lead4pass.com/100-101.html>

100% Passing Guarantee
100% Money Back Assurance

Following Questions and Answers are all new published by Cisco
Official Exam Center

-  **Instant Download** After Purchase
-  **100% Money Back** Guarantee
-  **365 Days** Free Update
-  **800,000+** Satisfied Customers





QUESTION 1

Which two statements describe the IP address 10.16.3.65/23? (Choose two.)

- A. The subnet address is 10.16.3.0 255.255.254.0.
- B. The lowest host address in the subnet is 10.16.2.1 255.255.254.0.
- C. The last valid host address in the subnet is 10.16.2.254 255.255.254.0
- D. The broadcast address of the subnet is 10.16.3.255 255.255.254.0.
- E. The network is not subnetted.

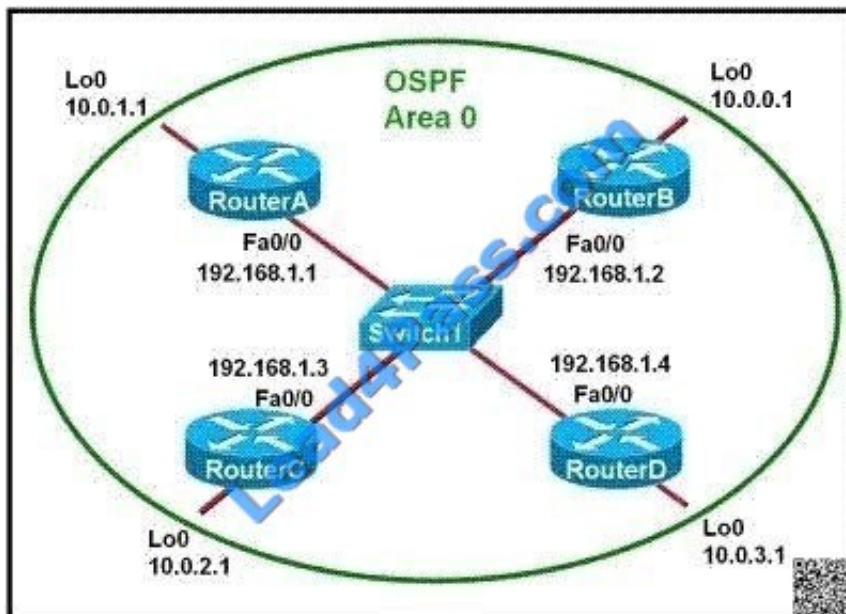
Correct Answer: BD

The mask 255.255.254.0 (/23) used with a Class A address means that there are 15 subnet bits and 9 host bits. The block size in the third octet is 2 (256 - 254). So this makes the subnets in 0, 2, 4, 6, etc., all the way to 254. The host

10.16.3.65 is in the 2.0 subnet. The next subnet is 4.0, so the broadcast address for the 2.0 subnet is 3.255. The valid host addresses are 2.1 through 3.254

QUESTION 2

Refer to the exhibit.



Which two statements are true about the loopback address that is configured on RouterB? (Choose two.)

- A. It ensures that data will be forwarded by RouterB.
- B. It provides stability for the OSPF process on RouterB.



- C. It specifies that the router ID for RouterB should be 10.0.0.1.
- D. It decreases the metric for routes that are advertised from RouterB.
- E. It indicates that RouterB should be elected the DR for the LAN.

Correct Answer: BC

A loopback interface never comes down even if the link is broken so it provides stability for the OSPF process (for example we use that loopback interface as the router-id) - The router-ID is chosen in the order below:

+ The highest IP address assigned to a loopback (logical) interface. + If a loopback interface is not defined, the highest IP address of all active router's physical interfaces will be chosen. -> The loopback interface will be chosen as the router ID of RouterB

QUESTION 3

Which two options will help to solve the problem of a network that is suffering a broadcast storm? (Choose two.)

- A. a bridge
- B. a router
- C. a hub
- D. a Layer 3 switch
- E. an access point

Correct Answer: BD

Routers and layer 3 switches will not propagate broadcast traffic beyond the local segment, so the use of these devices is the best method for eliminating broadcast storms.

QUESTION 4

Select and Place:



Drag the appropriate command on the left to the configuration task it accomplishes. (Not all options are used.)

login password cantCome1n	encrypt all clear text passwords
enable password uwi11NeverNo	protect access to the user mode prompt
service password-encryption	set privileged mode encrypted password
line console 0 password friendS0nly	set password to allow Telnet connections
enable secret noWay1n4u	set privileged mode clear text password
line vty 0 4 password 2hard2Guess	

Correct Answer:

Drag the appropriate command on the left to the configuration task it accomplishes. (Not all options are used.)

login password cantCome1n	service password-encryption
	line console 0 password friendS0nly
	enable secret noWay1n4u
	line vty 0 4 password 2hard2Guess
	enable password uwi11NeverNo

QUESTION 5



Instructions

You can click on the grey buttons below to view the different windows.

Each of the windows can be minimized by clicking on the [-]. You can also reposition a window by dragging it by the title bar.

The "Tab" key and most commands that use the "Control" or "Escape" keys are not supported and are not necessary to complete this simulation.

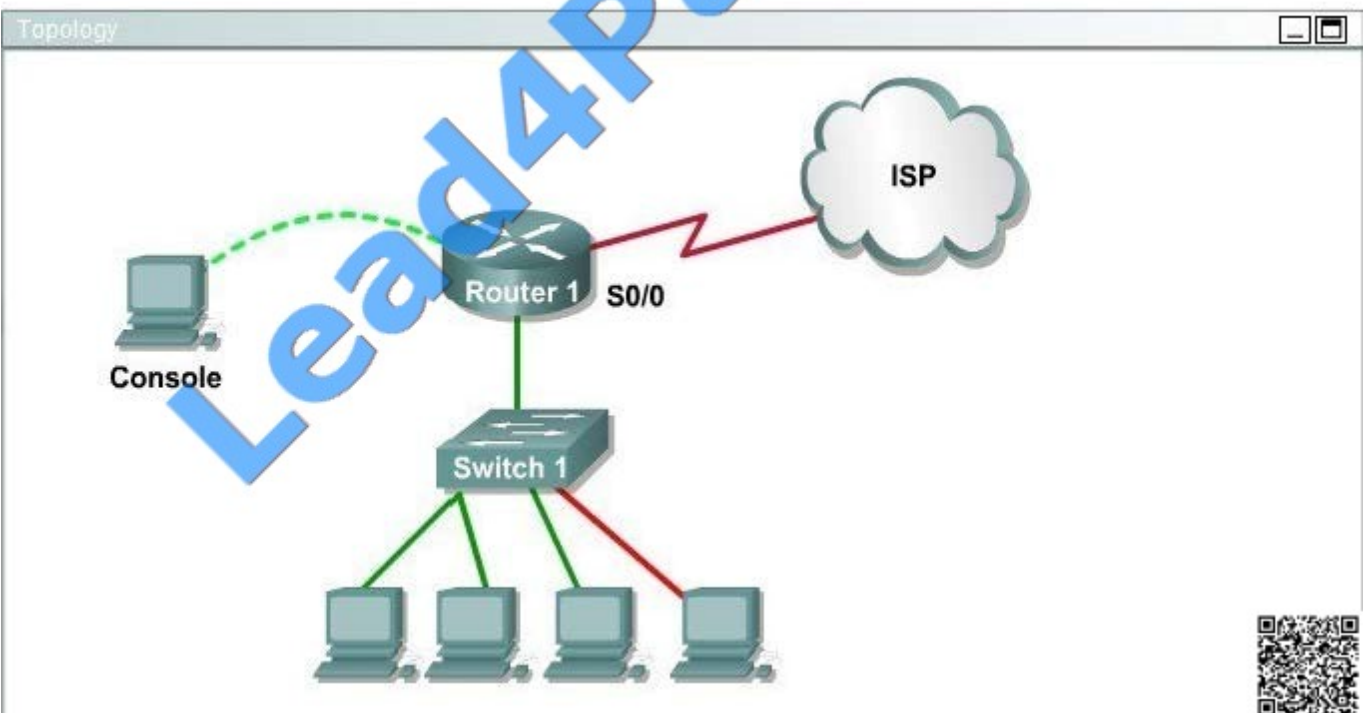
Scenario

This task requires the use of various **show** commands from the CLI of Router1 to answer four multiple-choice questions. This task does **not** require any configuration.

NOTE: The show running-configuration and the show startup-configuration commands have been disabled in this simulation.

To access the multiple-choice questions, click on the numbered boxes on the right of the top panel.

There are 4 multiple-choice questions with this task. Be sure to answer all 4 questions before leaving this item.





Including the address on the Routed Ethernet interface, how many hosts can have IP addresses on the LAN to which Routed is connected?

- A. 6
- B. 30
- C. 62
- D. 126

Correct Answer: A

This is a /29 address, so there are 6 usable IP's on this subnet.

[100-101 PDF Dumps](#)

[100-101 Study Guide](#)

[100-101 Exam Questions](#)



To Read the [Whole Q&As](#), please purchase the [Complete Version](#) from [Our website](#).

Try our product !

100% Guaranteed Success
100% Money Back Guarantee
365 Days Free Update
Instant Download After Purchase
24x7 Customer Support
Average 99.9% Success Rate
More than 800,000 Satisfied Customers Worldwide
Multi-Platform capabilities - [Windows](#), [Mac](#), [Android](#), [iPhone](#), [iPod](#), [iPad](#), [Kindle](#)

We provide exam PDF and VCE of Cisco, Microsoft, IBM, CompTIA, Oracle and other IT Certifications. You can view Vendor list of All Certification Exams offered:

<https://www.lead4pass.com/allproducts>

Need Help

Please provide as much detail as possible so we can best assist you.
To update a previously submitted ticket:



 <p>One Year Free Update Free update is available within One Year after your purchase. After One Year, you will get 50% discounts for updating. And we are proud to boast a 24/7 efficient Customer Support system via Email.</p>	 <p>Money Back Guarantee To ensure that you are spending on quality products, we provide 100% money back guarantee for 30 days from the date of purchase.</p>	 <p>Security & Privacy We respect customer privacy. We use McAfee's security service to provide you with utmost security for your personal information & peace of mind.</p>
---	---	--

Any charges made through this site will appear as Global Simulators Limited.
All trademarks are the property of their respective owners.
Copyright © lead4pass, All Rights Reserved.