

050-708^{Q&As}

SUSE Linux Enterprise Desktop 10 Administration

Pass Novell 050-708 Exam with 100% Guarantee

Free Download Real Questions & Answers **PDF** and **VCE** file from:

<https://www.leads4pass.com/050-708.html>

100% Passing Guarantee
100% Money Back Assurance

Following Questions and Answers are all new published by Novell
Official Exam Center

-  **Instant Download** After Purchase
-  **100% Money Back** Guarantee
-  **365 Days** Free Update
-  **800,000+** Satisfied Customers



QUESTION 1

Which SSH-related client command registers new keys with the ssh-agent?

- A. scp
- B. ssh
- C. ssh-add
- D. ssh-keygen
- E. ssh-keyscan

Correct Answer: C

QUESTION 2

Given the following information:

Username: temp

Expiration Date: April 30, 2008

Home Directory: to be automatically created

Which command will create the user account with the information listed above?

- A. useradd -d -e 04-30-2008 temp
- B. useradd -m -d 04-30-2008 temp
- C. useradd -m -e 04-30-2008 temp
- D. useradd -d -e 2008-04-30 temp
- E. useradd -m -d 2008-04-30 temp
- F. useradd -m -e 2008-04-30 temp

Correct Answer: F

QUESTION 3

The following options appear when adding a network printer:



Which option do you select if the printer being added is connected to a Windows server?

- A. Print via CUPS Network Server
- B. Print via LPD-Style Network Server
- C. Print via SMB Network Server
- D. Print via IPX Network Server
- E. Print Directly to a Network printer
- F. Other Setup

Correct Answer: C

QUESTION 4

You are logged in as geeko. You want to switch to user temp and start a login shell. Which command will do this?

- A. su temp
- B. su /temp
- C. su - temp
- D. su -l temp
- E. su geeko temp

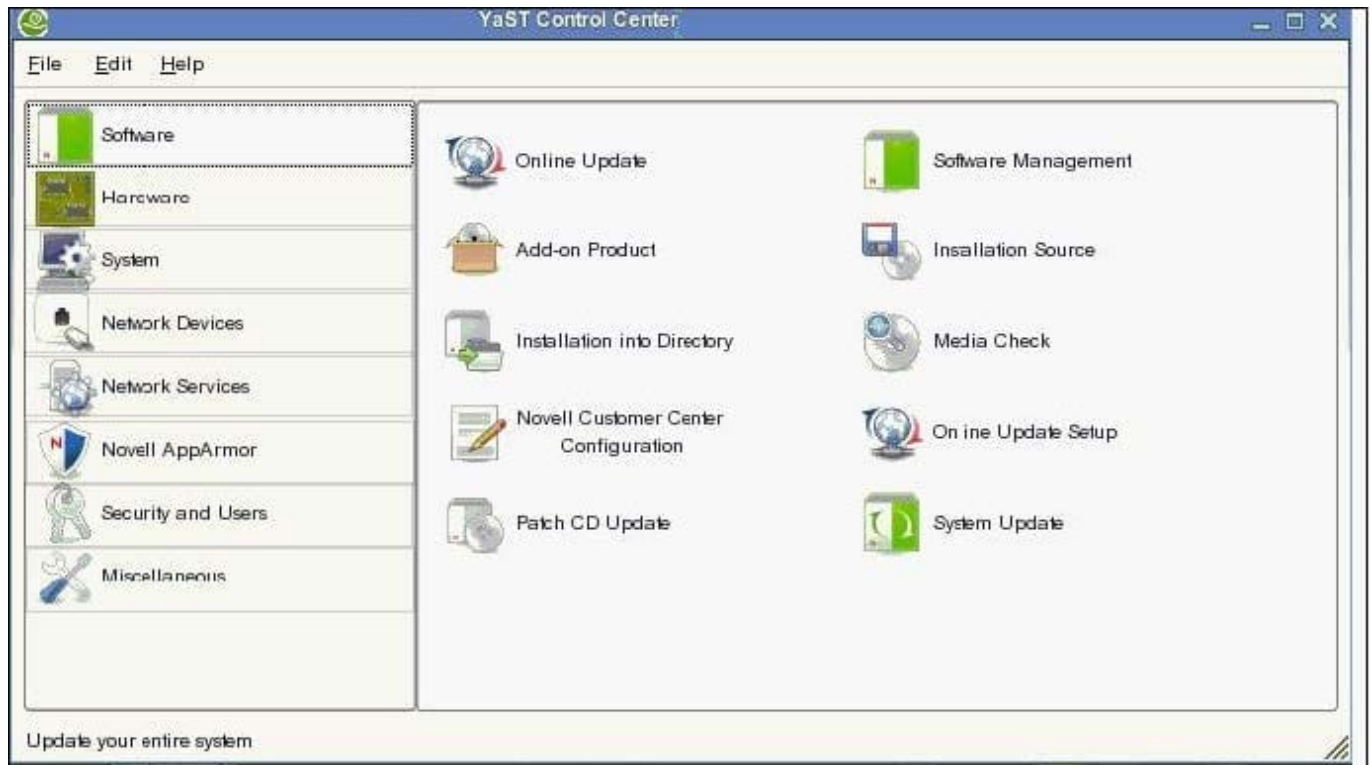
Correct Answer: C

QUESTION 5

Click on the Point-and-Click button to begin.

Click on the option or Icon that will allow you to gain access to NetworkManager.

Hot Area:



Correct Answer:

