

## 010-151<sup>Q&As</sup>

Supporting Cisco Data Center System Devices

### Pass Cisco 010-151 Exam with 100% Guarantee

Free Download Real Questions & Answers **PDF** and **VCE** file from:

<https://www.leads4pass.com/010-151.html>

100% Passing Guarantee  
100% Money Back Assurance

Following Questions and Answers are all new published by Cisco  
Official Exam Center

-  **Instant Download** After Purchase
-  **100% Money Back** Guarantee
-  **365 Days** Free Update
-  **800,000+** Satisfied Customers



## QUESTION 1

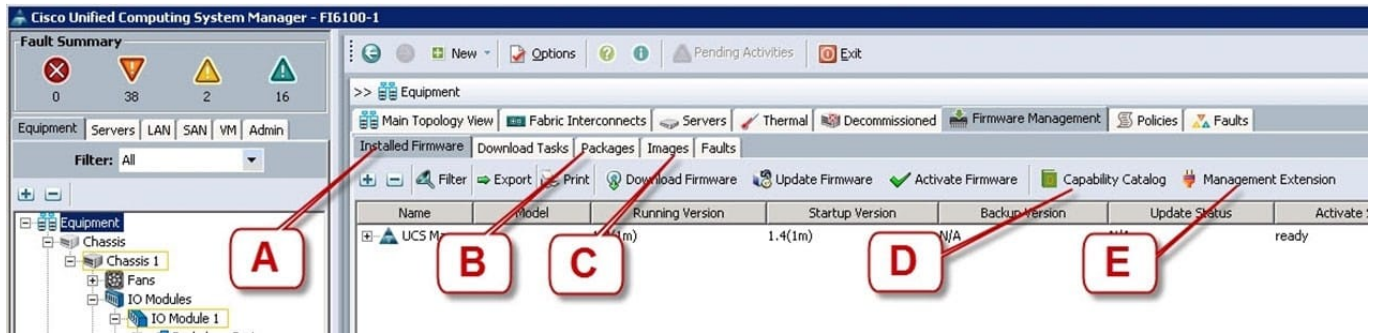
Which three statements about powering down a Cisco UCS C-Series Rack-Mount Server to perform maintenance or replacement are true? (Choose three.)

- A. Standby power mode: Power is supplied only to the service processor and the cooling fans, and it is safe to power off the server from this mode.
- B. Power status LED. Green indicates that the server is in main power mode and can be safely powered off.
- C. Graceful shutdown: Press and release the power button. The operating system performs a graceful shutdown, and the server goes to standby mode, which is indicated by an amber power status LED.
- D. Disconnect the power cords from the power supplies in your server to completely power off the server.
- E. Only an emergency shutdown can be performed using the power button on the server front panel.
- F. The Cisco UCS C-Series Rack-Mount Server has only one power mode.

Correct Answer: ACD

## QUESTION 2

Refer to the exhibit.



Where is the best place to find the B200 BIOS version used in a specific Cisco UCS Manager version?

- A. A - Installed Firmware
- B. B - Packages
- C. C - Images
- D. D - Capability Catalog
- E. E - Management Extension

Correct Answer: B

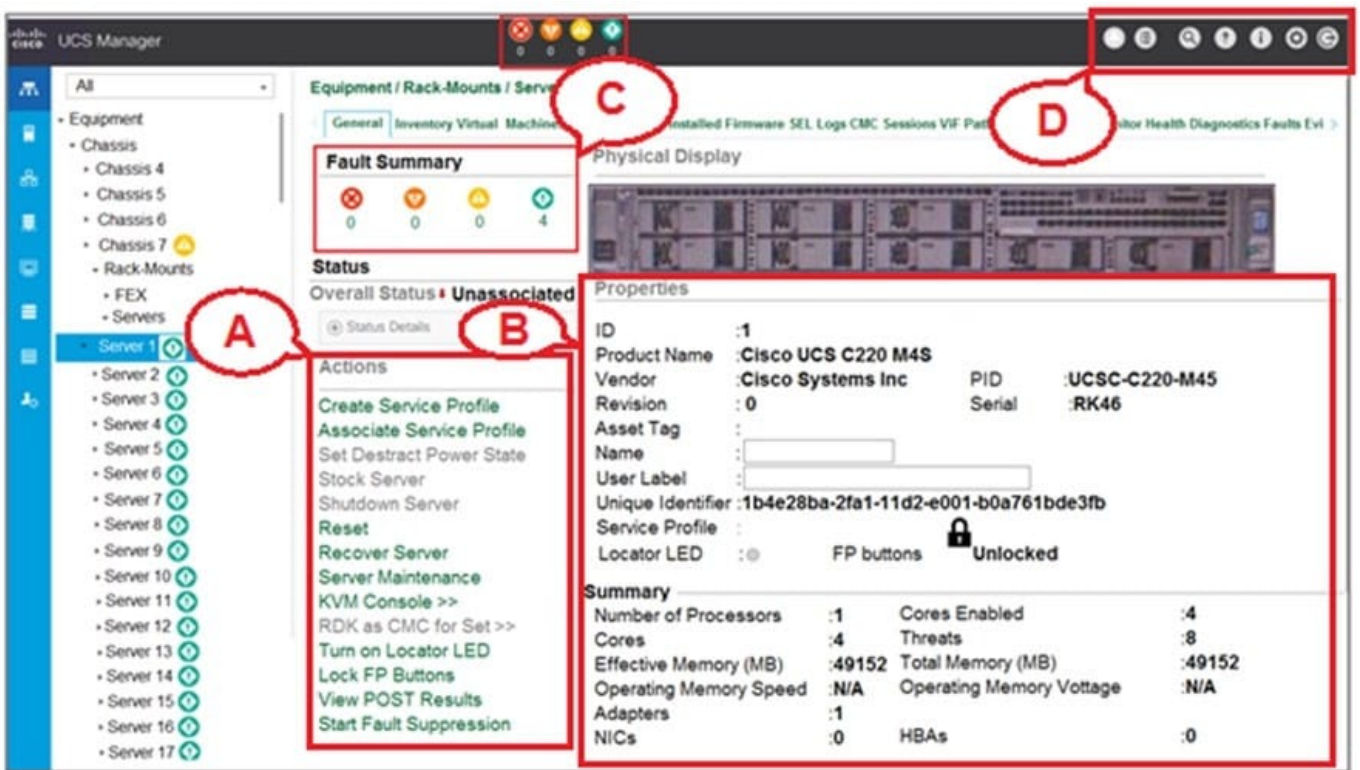
**QUESTION 3**

Which two statements about PCIe are true? (Choose two.)

- A. The PCIe link is built around dedicated unidirectional couples of serial, point-to-point connections known as lanes.
- B. You can install a PCI Express x8 adapter into an x4 slot.
- C. The PCIe standard is a bus-based system in which all the devices share the same bidirectional, 32-bit or 64-bit, parallel signal path.
- D. The PCIe 1.0 standard doubles the transfer rate compared to PCIe 2.0.
- E. A link that is composed of four lanes is called an x4 link.

Correct Answer: AE

**QUESTION 4**



Refer to the exhibit. Which item list all available functions that can be perform to the server?

- A. A
- B. B

C. C

D. D

Correct Answer: A

---

## QUESTION 5

Which three tools are necessary to console into a Cisco UCS C-Series Rack-Mount Server? (Choose three.)

A. Cisco DB-9-to-RJ-45 console cable

B. laptop

C. monitor

D. keyboard

E. KVM dongle

F. USB serial adapter

Correct Answer: CDE

[010-151 VCE Dumps](#)

[010-151 Practice Test](#)

[010-151 Braindumps](#)